

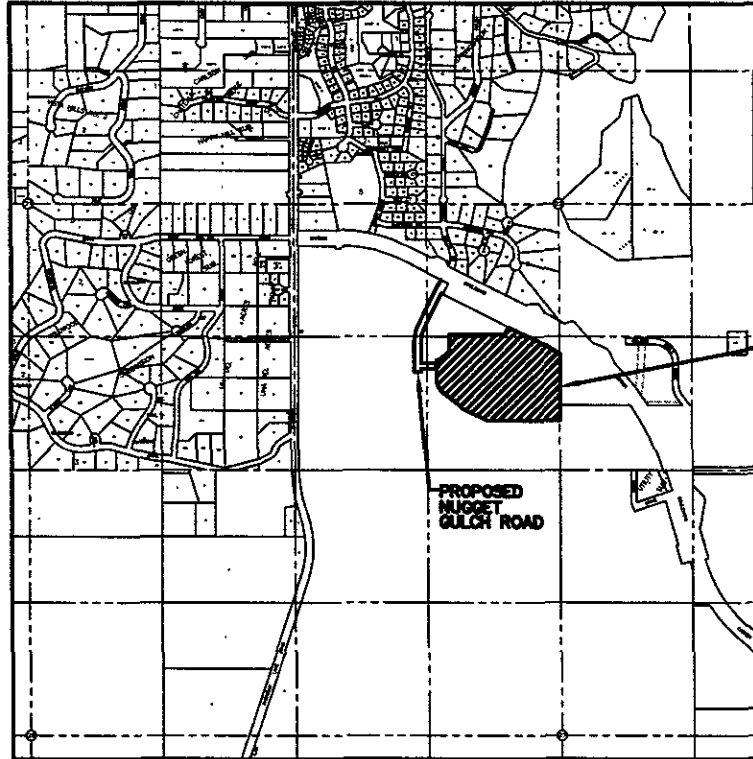
# INITIAL PLANNED DEVELOPMENT

## STONEY CREEK APARTMENTS BELGARDE ENTERPRISES RAPID CITY, SD

**FMG, Inc.**  
3750 Belgrade Road  
Rapid City, SD 57702-0017  
605-342-4322  
www.fmginc.com



File Number	05PD001
Location	STONEY CREEK APARTMENTS
Client	BELGARDE ENTERPRISES
Designed By	FMG
Drawn By	FMG
Checked By	FMG



**REVISIONS**  
 NO. DATE  
 1. 01/14/2005  
 2. 01/14/2005  
 3. 01/14/2005



PROJECT SITE

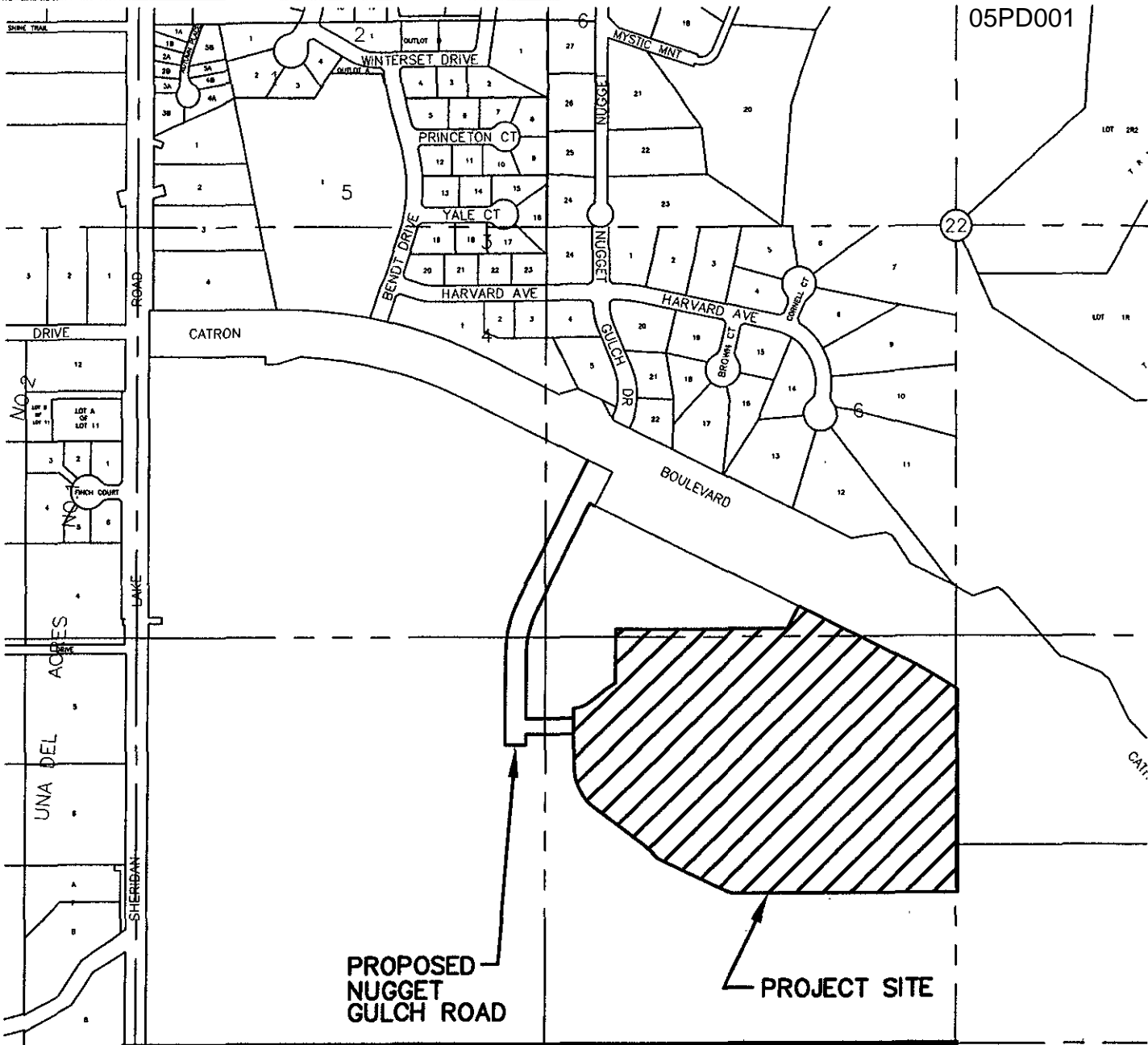
PROPOSED  
NUGGET  
GULCH ROAD

- REVISIONS**
1. TITLE SHEET
  2. GENERAL LAYOUT AND NOTES
  3. EXISTING CONTOURS AND GENERAL SWANAGE

I:\Land Projects\8801 Stoney Creek\dwg\8801Title.dwg, TITLE, 01/14/2005 12:34:21 PM

INITIAL PLANNED DEVELOPMENT  
STONEY CREEK APARTMENTS  
BELGARDE ENTERPRISES  
RAPID CITY, SD





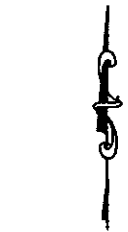
PROPOSED NUGGET GULCH ROAD

PROJECT SITE

RECEIVED

JAN 14 2005

Rapid City Growth Management Department



0 250' 500'  
SCALE: 1"=500'

**INITIAL PLANNED DEVELOPMENT**  
**STONEY CREEK APARTMENTS**  
**CATRON BOULEVARD**  
**RAPID CITY, SOUTH DAKOTA**

JANUARY 2004

Sheet Title:  
**VICINITY MAP**

Location:  
 SW 1/4, SEC. 22  
 T1N, R7E, B1W

Surveyed By: DMG  
 Date: SEPT. 2004

Designed By: AF  
 Drawn By: K/CK  
 Checked By: AF

File Number:  
 8801



**F M G, Inc.**  
 3700 Sturgis Road  
 Rapid City, SD 57702-0317  
 (605) 342-4105 FAX (605) 342-4222  
 www.fmgengineering.com

Sheet Number: **1**  
 Total Sheets: **1**

I:\Land Projects\8801\Stoney Creek\dwg\8801 Title.dwg, TITLE (2), 01/14/2005 02:19:03 PM