

FAIRWAY HILLS - BUILDING SPECIFIC INFORMATION

BUILDING	SFT. R.A.	SFT. R. COPI	SQ. FT. PER FLOOR	FLOOR AREA PER BUILDING	FLOOR AREA PER BUILDING	PER BUILDING	PER BUILDING	PER BUILDING	PER BUILDING	PER BUILDING
BUILDING 1	1309	2293	8366	1846	8366	1846	3384	1670	4236	
BUILDING 3	8346	1846	8366	1846	8366	1846	3384	1670	4236	
BUILDING 4	8346	1846	8366	1846	8366	1846	3384	1670	4236	
BUILDING 7	8346	1846	8366	1846	8366	1846	3384	1670	4236	
BUILDING 9	8346	1846	8366	1846	8366	1846	3384	1670	4236	
TOTAL	34299	7271	32948	7271	32948	7271	14256	7010	17226	

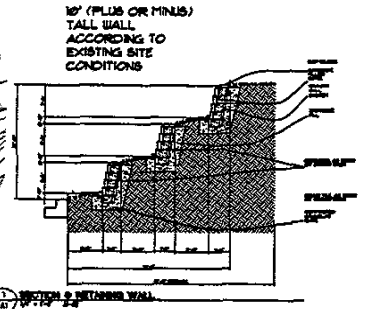
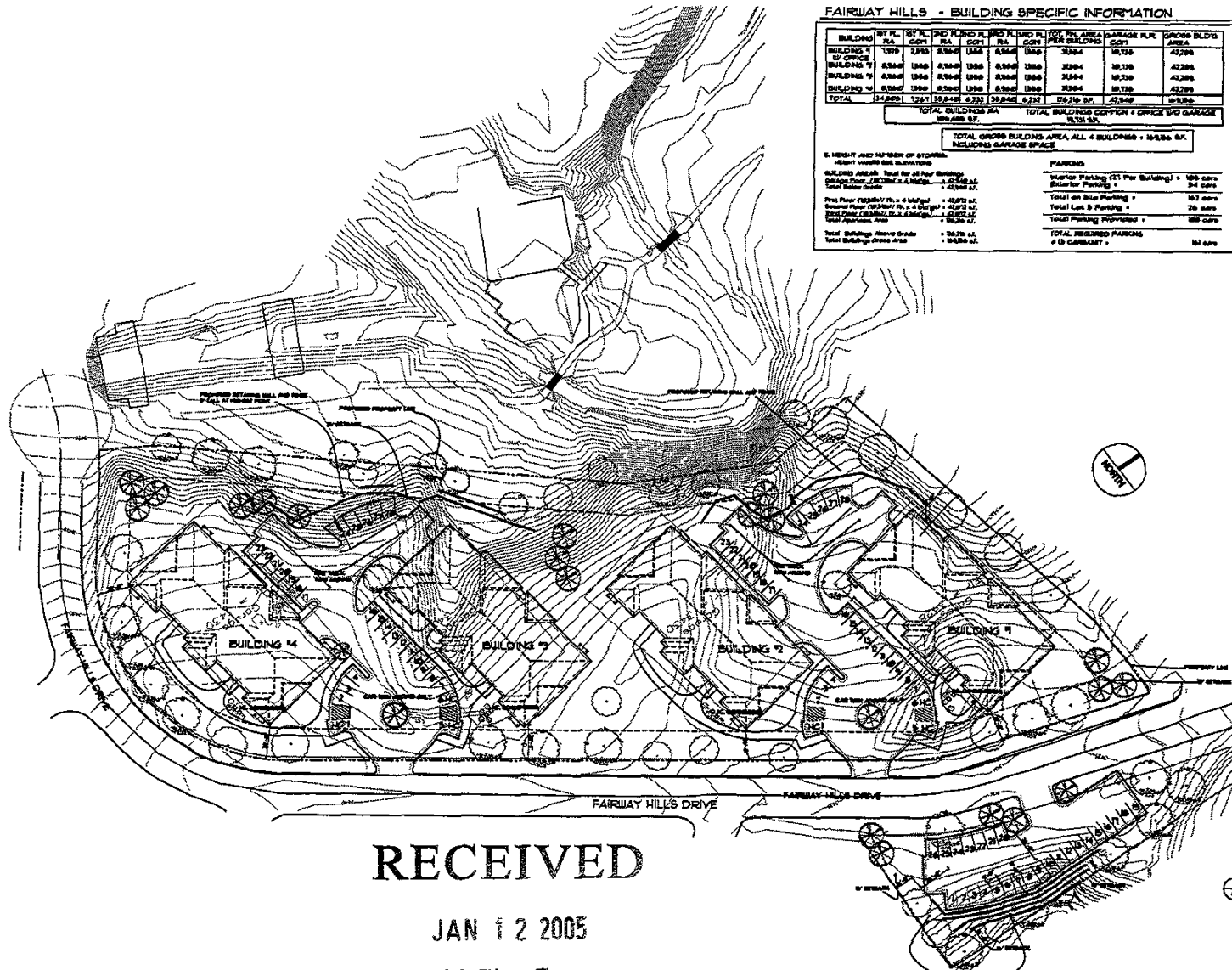
TOTAL BUILDING AREA: 181,326 SF  
 TOTAL OFFICE BUILDING AREA: 181,326 SF  
 INCLUDING GARAGE SPACE

TABLE FOR BUILDING (1) Building or Office

UNIT CODE	UNIT TYPE	1ST FLOOR	2ND FLOOR	3RD FLOOR	TOTAL UNITS	UNIT SIZE (SQ. FT.)	TOTAL AREA (SQ. FT.)
1A	OFF + DEN	2	2	2	6	1846	11,076
1B	OFF + DEN	2	2	2	6	1846	11,076
TOTAL PER BLDG		4	4	4	12		22,152

TABLE FOR TYP BUILDING (2,3,4)

UNIT CODE	UNIT TYPE	1ST FLOOR	2ND FLOOR	3RD FLOOR	TOTAL UNITS	UNIT SIZE (SQ. FT.)	TOTAL AREA (SQ. FT.)
2A	OFF	1	1	1	3	1846	5,538
2B	OFF	1	1	1	3	1846	5,538
2C	OFF	1	1	1	3	1846	5,538
2E	OFF + DEN	2	2	2	6	1846	11,076
2F	OFF + DEN	2	2	2	6	1846	11,076
TOTAL PER TYP BLDG		4	4	4	12		36,762



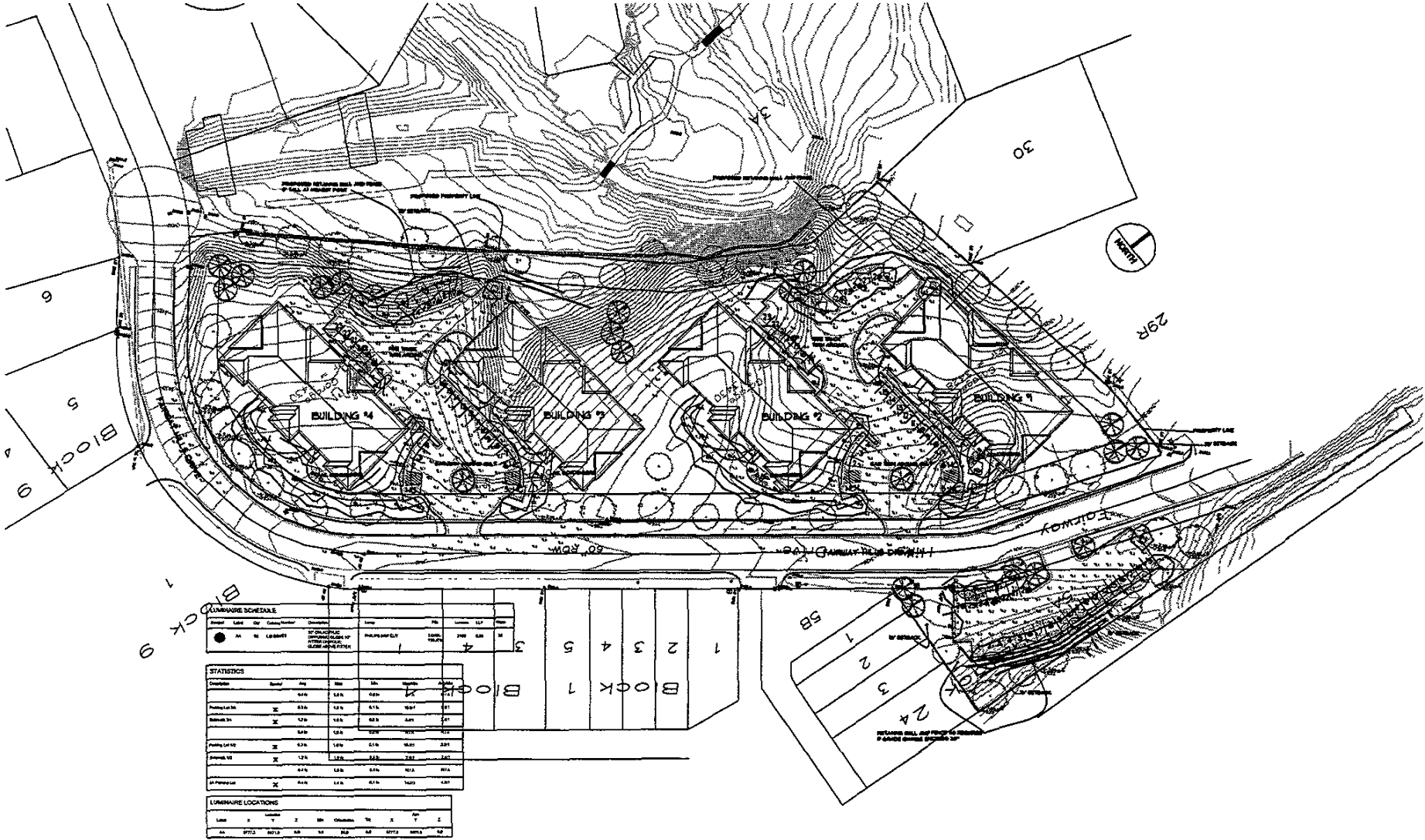
**RECEIVED**  
 JAN 12 2005  
 Rapid City Growth  
 Management Department

JANUARY 10, 2005



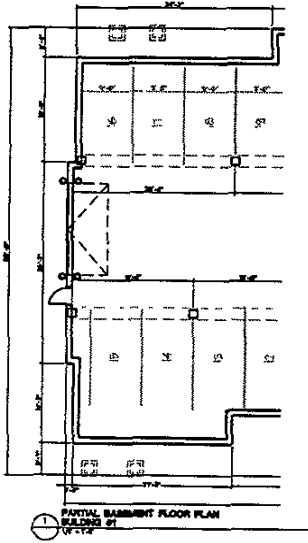
FAIRWAY HILLS  
 RAPID CITY, SOUTH DAKOTA

SITE PLAN

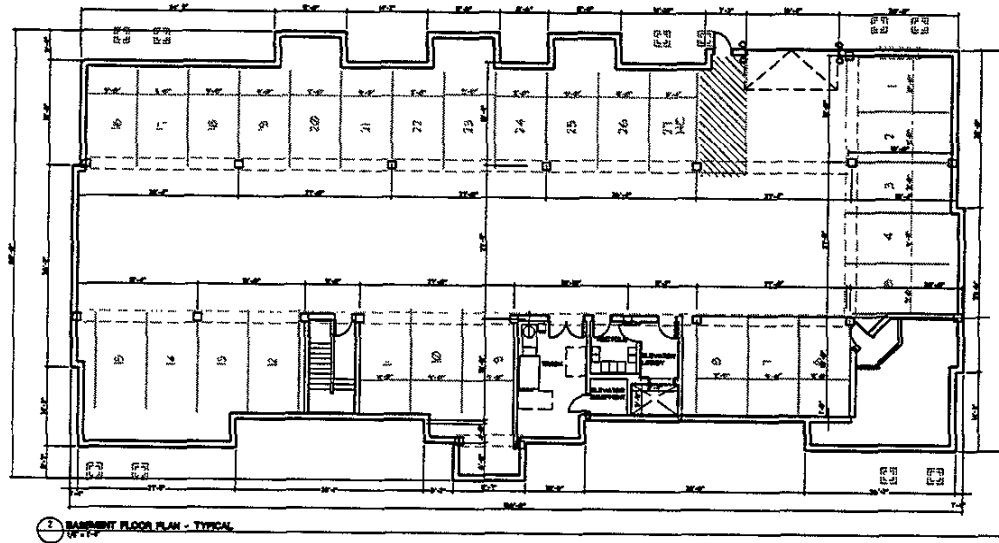


JANUARY 10, 2005

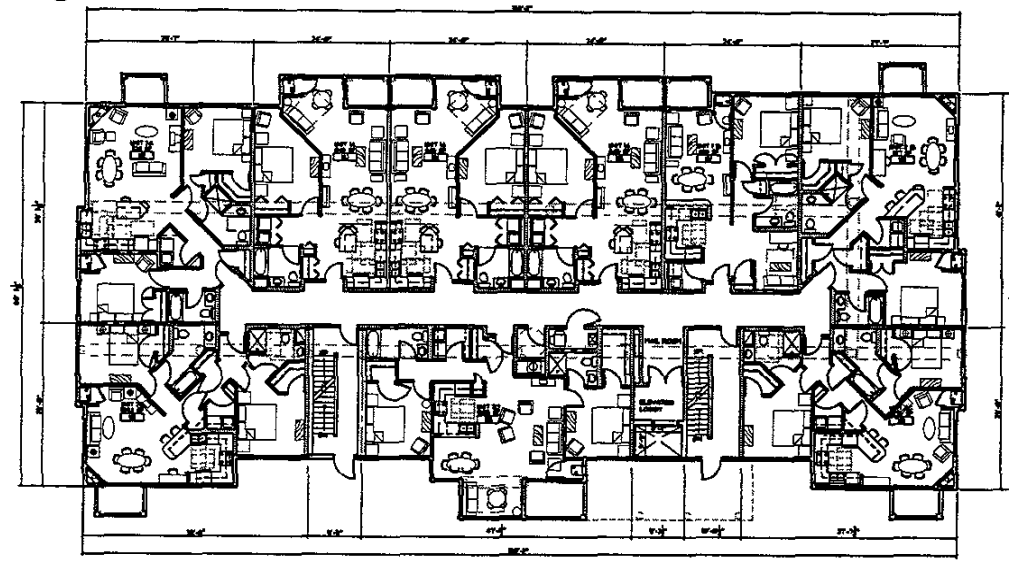




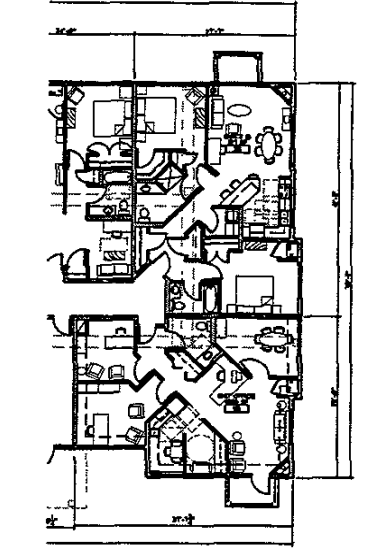
1 PARTIAL BASEMENT FLOOR PLAN  
SECTION 01  
10-11-04



2 BASEMENT FLOOR PLAN - TYPICAL  
10-11-04

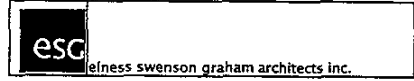


3 FIRST FLOOR PLAN - TYPICAL  
10-11-04



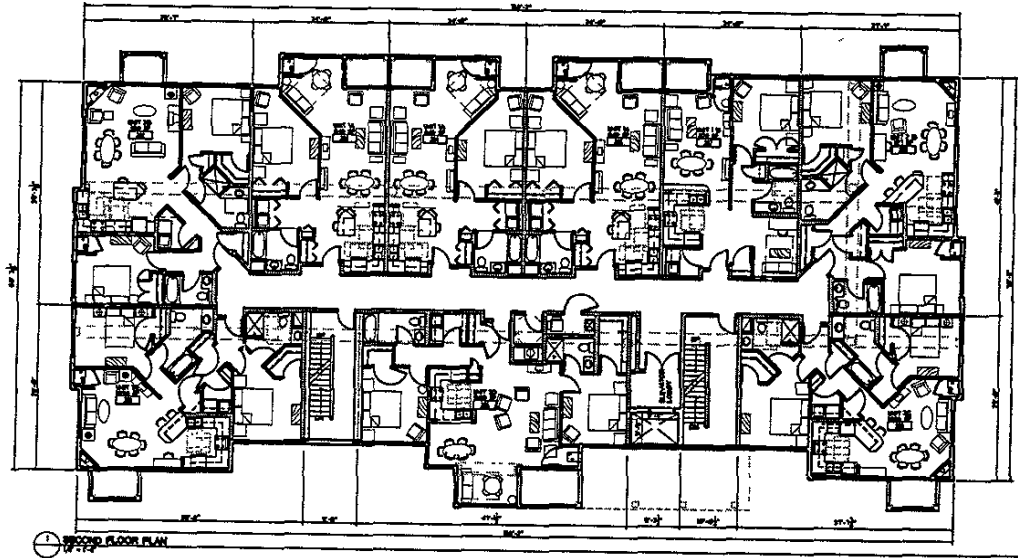
4 PARTIAL FIRST FLOOR PLAN  
SECTION 01 WITH OFFICE  
10-11-04

JANUARY 10, 2005

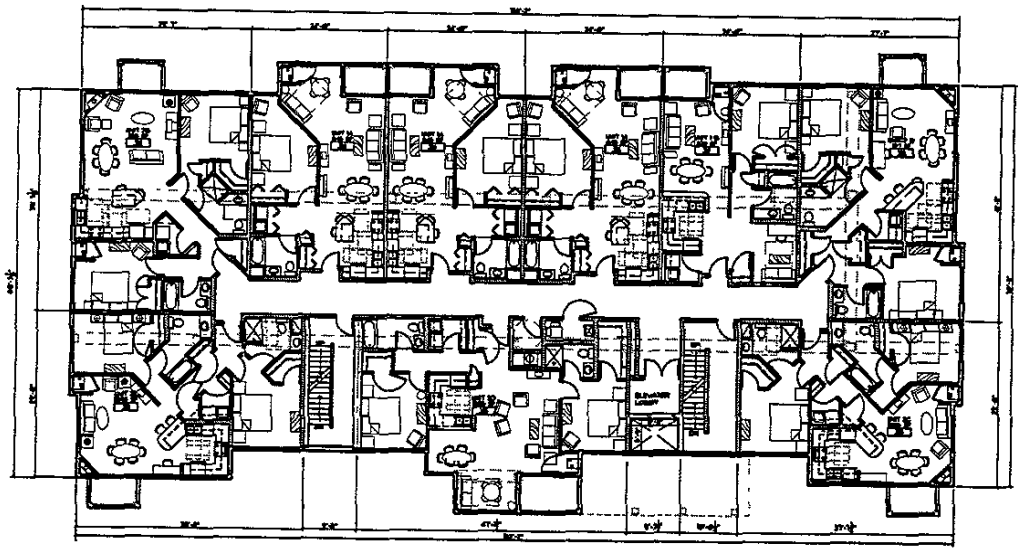


FAIRWAY HILLS  
RAPID CITY, SOUTH DAKOTA

BASEMENT & FIRST FLOOR PLAN

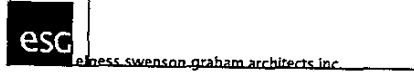


① SECOND FLOOR PLAN

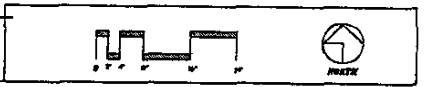


② THIRD FLOOR PLAN

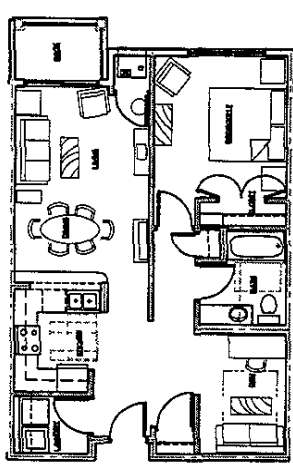
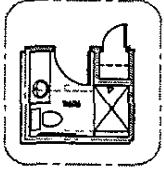
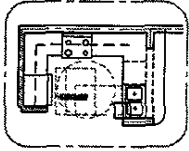
JANUARY 10, 2005



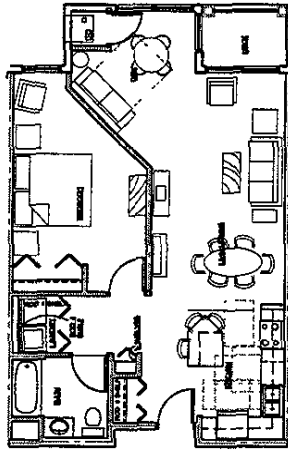
**FAIRWAY HILLS**  
RAPID CITY, SOUTH DAKOTA



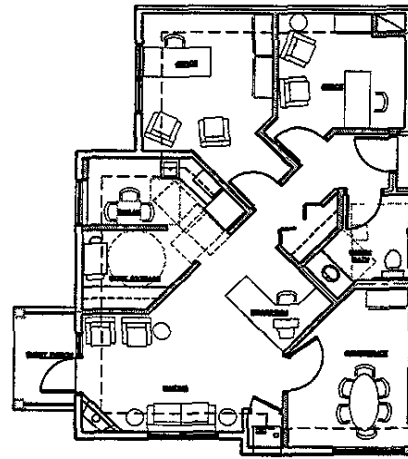
SECOND & THIRD FLOOR PLAN



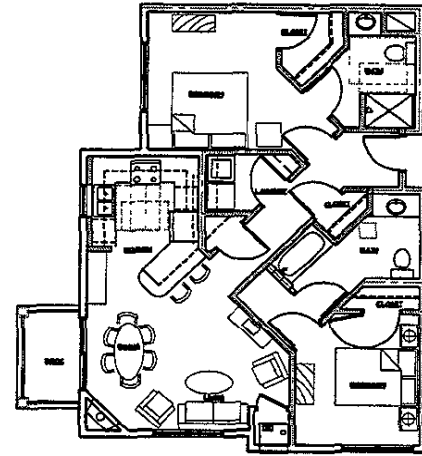
① UNIT 20 - ONE BEDROOM PLUS DEN  
W 7'7"



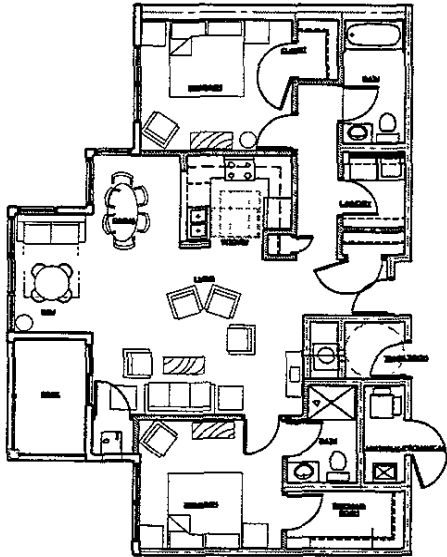
① UNIT 21 - ONE BEDROOM PLUS DEN  
W 7'7"



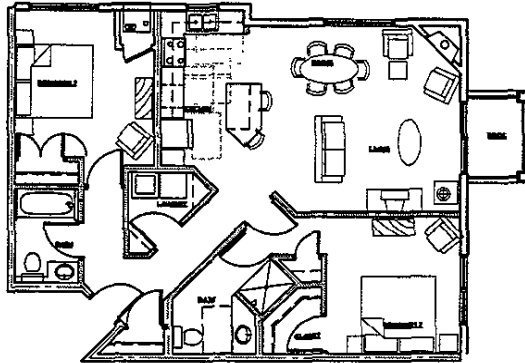
② UNIT 2 - OFF. + OFFICE + CONFERENCE  
W 11'2"



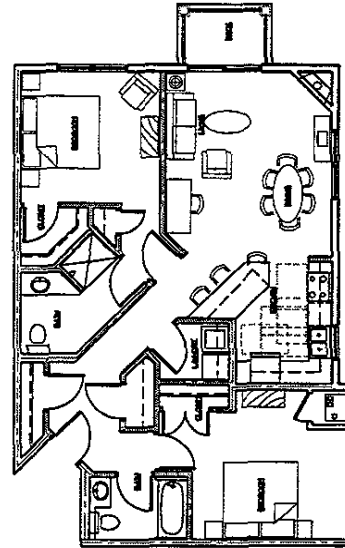
① UNIT 19 - 2 BEDROOM  
W 11'2"



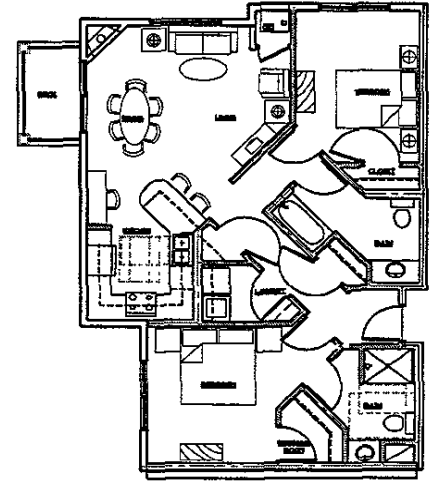
① UNIT 22 - 2 BEDROOM PLUS DEN  
W 11'2"



① UNIT 24 - 2 BEDROOM  
W 11'2"

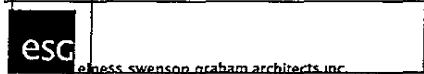


② UNIT 23 - 2 BEDROOM  
W 11'2"



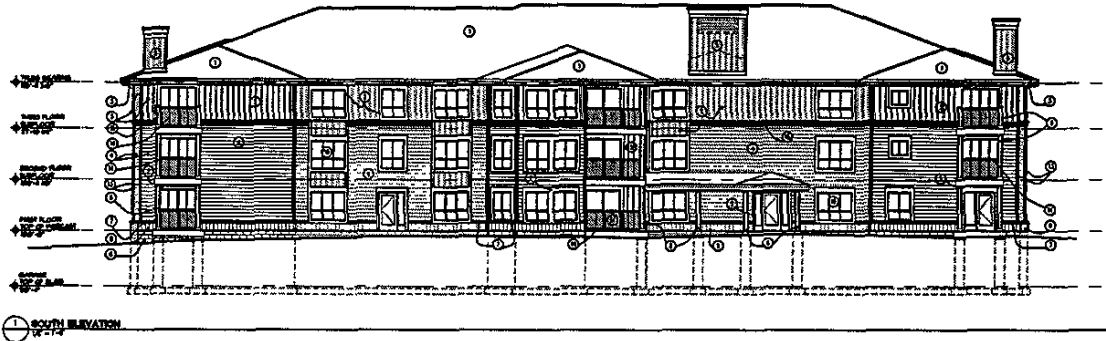
① UNIT 25 - 2 BEDROOM  
W 11'2"

JANUARY 10, 2005



FAIRWAY HILLS  
RAPID CITY, SOUTH DAKOTA

ENLARGED UNIT PLANS



- | TYPICAL MATERIAL FINISHES |                            |
|---------------------------|----------------------------|
| 1.                        | 2" x 4" CLAD SHIP LAP SIPS |
| 2.                        | 3" x 6" SHIP LAP SIPS      |
| 3.                        | 2" x 4" SHIP LAP SIPS      |
| 4.                        | SHIP LAP SIPS              |
| 5.                        | SHIP LAP SIPS              |
| 6.                        | SHIP LAP SIPS              |
| 7.                        | SHIP LAP SIPS              |
| 8.                        | SHIP LAP SIPS              |
| 9.                        | SHIP LAP SIPS              |
| 10.                       | SHIP LAP SIPS              |
| 11.                       | SHIP LAP SIPS              |
| 12.                       | SHIP LAP SIPS              |
| 13.                       | SHIP LAP SIPS              |
| 14.                       | SHIP LAP SIPS              |

