

DESCRIPTION OF R.O.W. VACATED BY THIS INSTRUMENT:

That portion of Greenway Street R.O.W. lying between the East line of Holcomb Avenue R.O.W. and a line between the South corner of Lot 3 and the East corner of Lot 19 of Block 1 of Millard Addition, Located in NE¼ of NE¼ of Section 36, T2N, R7E, BHM, Rapid City, Pennington County, South Dakota.



SCALE 1" = 100'
OCTOBER 27, 2004
REVISED 11-10-04

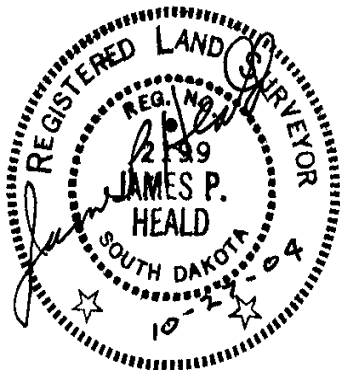
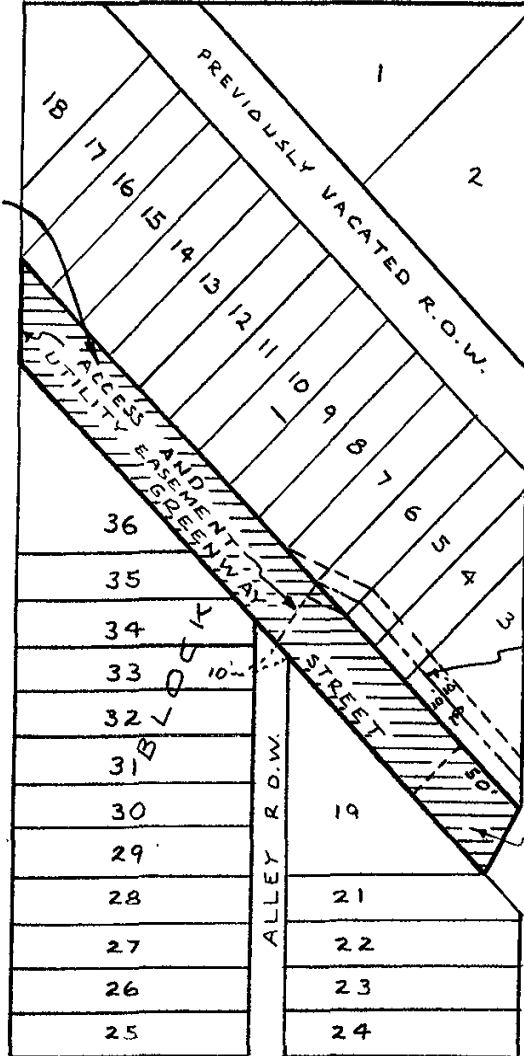
R.O.W. in Block 1 of Millard Addition was recorded in the plat of Millard Addition and filed in the Steel File on April 19, 1947 in the Office of the Pennington County Register of Deeds.

ANAMOSA STREET

R.O.W. VACATED BY THIS INSTRUMENT

HOLCOMB AVENUE

NORTH MAPLE AVENUE



COLLEGE AVENUE

RECEIVED

NOV 10 2004

Rapid City Growth Management Department



HEALD LAND SURVEYING
2218 Lockwood Drive
Rapid City, SD 57702-4266
(605) 343-1820 Fax 721-1336
Toll Free (888) 654-4527