

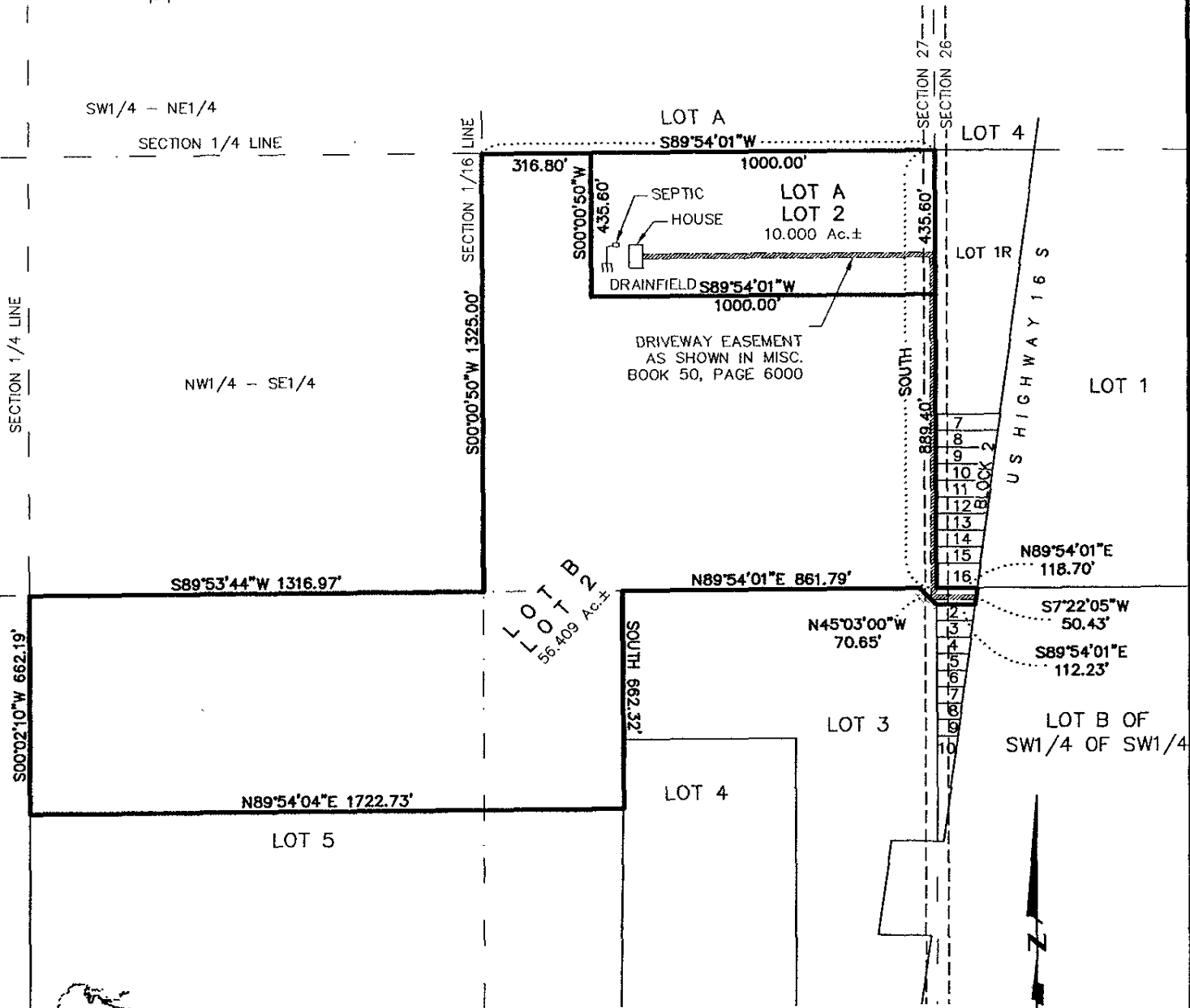
RECEIVED

DEC 28 2004

Rapid City Growth
Management Department

LAYOUT PLAT OF LOTS A AND B OF LOT 2 GODFREY ADDITION

LOCATED IN THE SE1/4 OF SECTION 27 AND
IN SW1/4 OF SW1/4 OF SECTION 26,
T1N, R7E, BHM,
PENNINGTON COUNTY, SOUTH DAKOTA



Renner Associates, LLC.

DECEMBER 22, 2004
N.T.S.

616 Sixth St. * Rapid City, SD 57701 * 605/721-7310
FAX: 605/721-7313 * E-MAIL: Gary@RennerAssoc.com
* Spearfish 605/717-0016 *



CITY HALL 1903

I:\Poody\Drawings\2124(Godfrey)\Layout.dwg, Layout1, 12/22/2004 3:24:52 PM