

PRELIMINARY PLAT OF

LOTS 1 THROUGH 6 OF BLOCK 1 AND LOT 1 AND LOT 2 OF BLOCK 2 OF BRIDLE PATH ESTATES

LOCATED IN THE E1/2 NE1/4 OF SECTION 36, TOWNSHIP 1 NORTH, RANGE 6 EAST OF THE BLACK HILLS MERIDIAN, PENNINGTON COUNTY, SOUTH DAKOTA.

DECEMBER, 2004

PREPARED BY:



D.C. Scott Co.

LAND SURVEYORS
3153 ANDERSON ROAD
RAPID CITY, SD 57703
(605) 393-2400

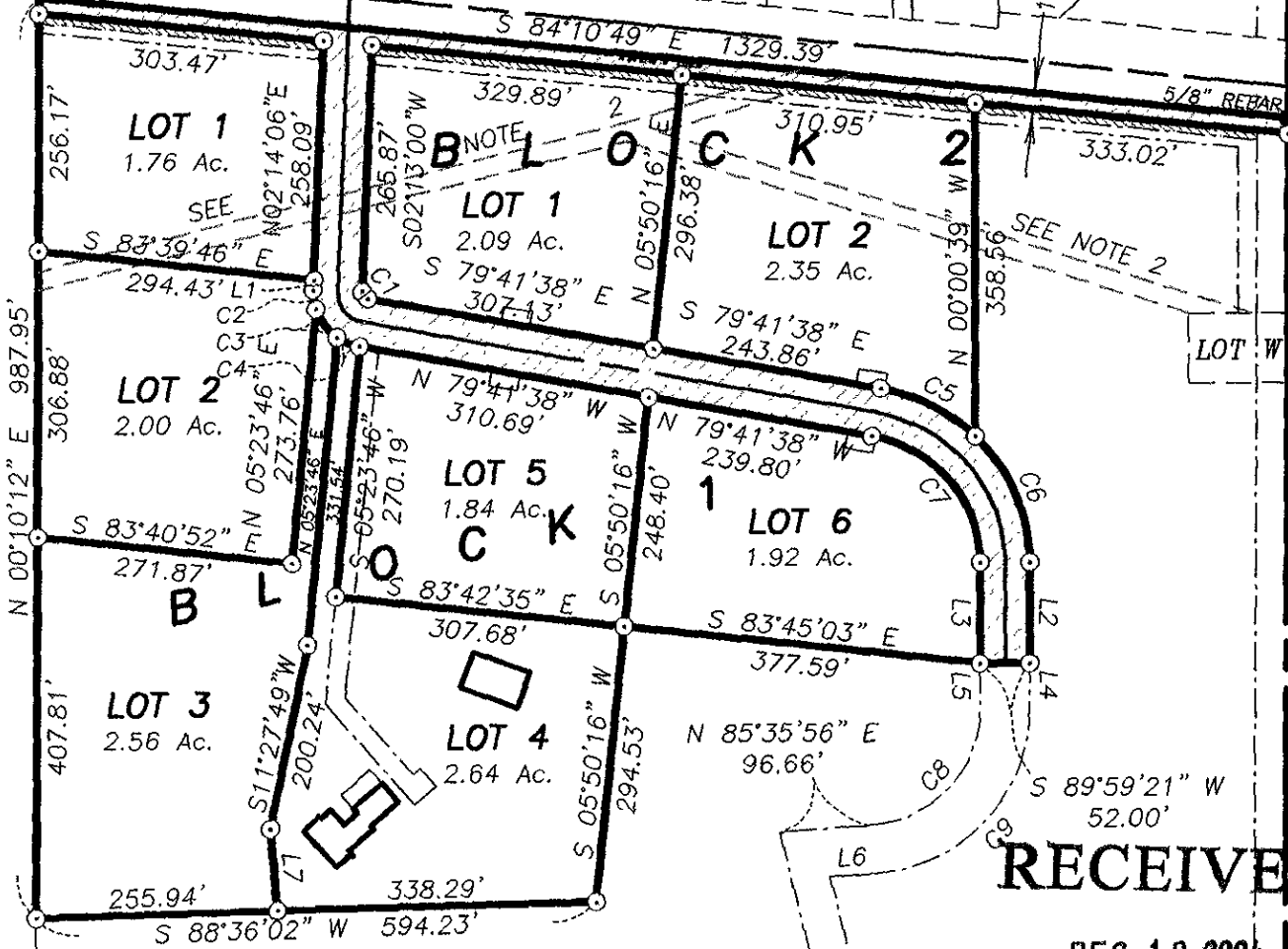
SCALE: 1" = 200'

100 0 100 200

449.03'

F E A Y R E D E R S U B D.
L O T 3 L O T 2 L O T 1

LOT B LOT A LOT G LOT F LOT E LOT D LOT C LOT D LOT E



RECEIVED

DEC 10 2004

Rapid City Growth Management Department