

X:\03-XXXX\03-0066\Drawings\Sheets\03-0066-PRD.dwg, 22x34, 12/30/2004 2:29:53 PM, 1:3:06955

HOMESTEAD STREET

**PLANNED RESIDENTIAL DEVELOPMENT
OF THE VILLAS AT HOMESTEAD GARDENS**
 INITIAL AND FINAL PRD FOR TRACT H, LOTS 13A, 13B, AND 14-19, BLOCK 4;
 LOTS 1A-3A, LOTS 1B-3B, AND LOTS 4-15, BLOCK 19; LOTS 1-10, BLOCK 20;
 AND DEDICATED STREETS AND INITIAL PRD FOR TRACT G
 LOCATED IN THE SE1/4NW1/4, NE1/4SW1/4, NW1/4SE1/4, AND SW1/4NE1/4,
 SECTION 3, T1N, R2E, BLM, PENNINGTON COUNTY, CITY OF RAPID CITY, SOUTH DAKOTA

INITIAL AND FINAL PRD, SITE DATA FOR SINGLE FAMILY AND TOWNHOME

SINGLE FAMILY	TOWNHOME
AREA - 7.54 ACRES	AREA - 1.34 ACRES
LOTS - 29	LOTS - 8
DENSITY - 3.0 LOTS PER ACRE	DENSITY - 6.0 LOTS PER ACRE

SETBACKS (SINGLE FAMILY AND TOWNHOME)

FRONT SETBACK - 15.0' TO HOUSE
 FRONT SETBACK - 18.0' TO GARAGE
 CORNER SETBACK - 15.0'
 REAR SETBACK - 20.0'
 SIDE SETBACK - 8.0'

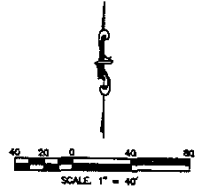
INITIAL PRD, SITE DATA FOR APARTMENTS (TRACT G)

AREA: 2.84 ACRES
 TOTAL NUMBER OF UNITS: 54
 DENSITY: 18.4 UNITS PER ACRE
 REQUIRED PARKING: 60 TOTAL
 PROVIDED PARKING: 28 IN GARAGES
 PROVIDED PARKING: 32 DECK
 TOTAL: 60 SPACES

LANDSCAPING POINTS
 SITE +126.00' SF
 BUILDINGS - 31,720 SF
 GARAGES - 18,640 SF
 REQUIRED: 91,507
 PROVIDED: 134,225

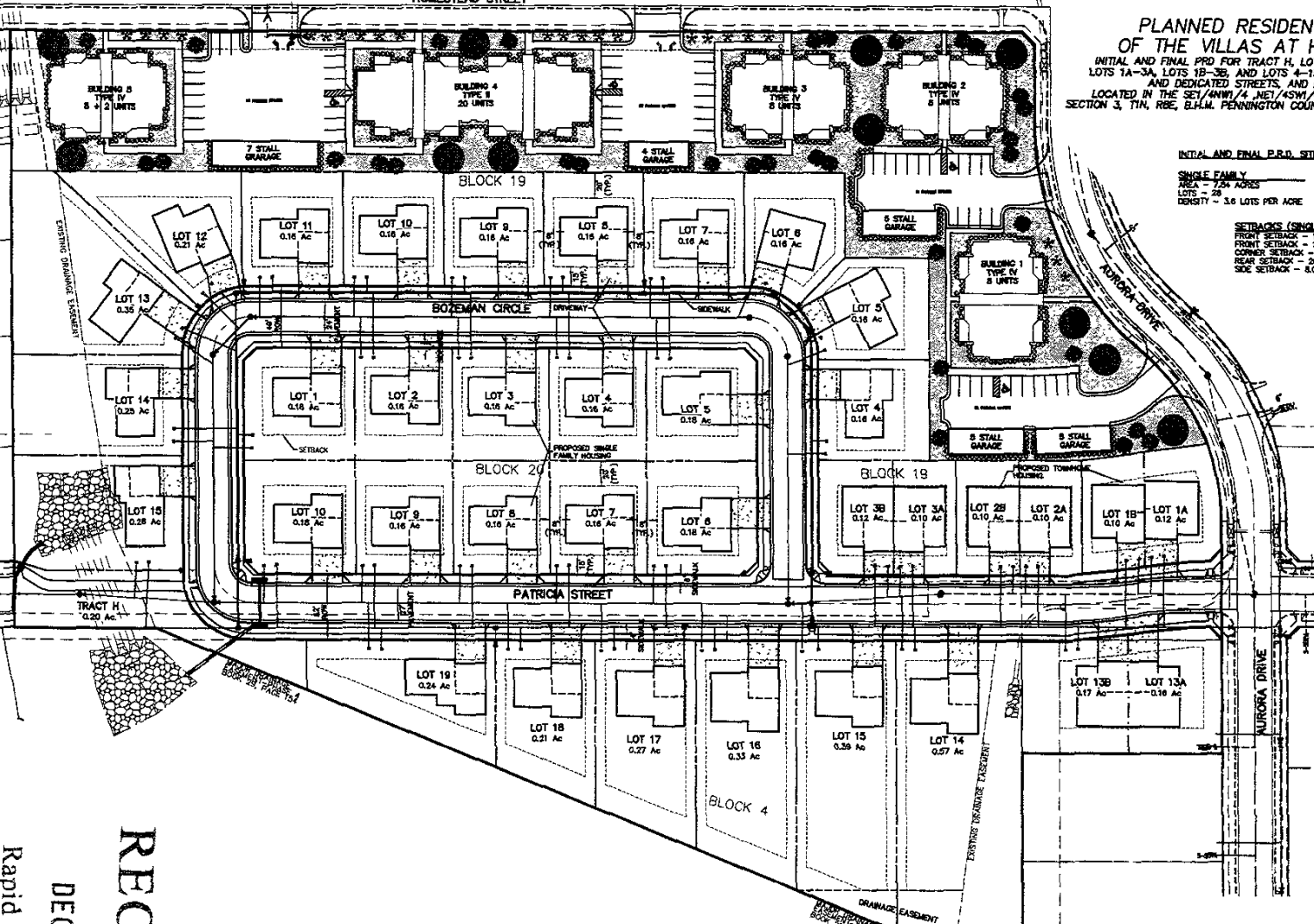
SETBACKS

FRONT SETBACK - 15.0' TO OCCUPIED STRUCTURE
 CORNER SETBACK - 15.0' TO OCCUPIED STRUCTURE
 REAR SETBACK - 20.0' TO OCCUPIED STRUCTURE
 SIDE SETBACK - 8.0' TO OCCUPIED STRUCTURE
 GARAGE SETBACK - 5.0'



THE VILLAS AT HOMESTEAD GARDENS
 JOB NO. 04-0046
 DECEMBER 30, 2004
 SHEET 1 OF 1

D.D.I.
DREAM DESIGN INTERNATIONAL, INC.
 PROFESSIONAL STRUCTURAL & CIVIL ENGINEERING CONSULTANTS
 528 BAKERS CITY ST., SUITE 4, RAPID CITY, SD 57701
 TEL: 605-348-0558 FAX: 605-348-4943 EMAIL: engineer@dreamdesigninc.com



RECEIVED

DEC 30 2004

Rapid City Growth
Management Department