

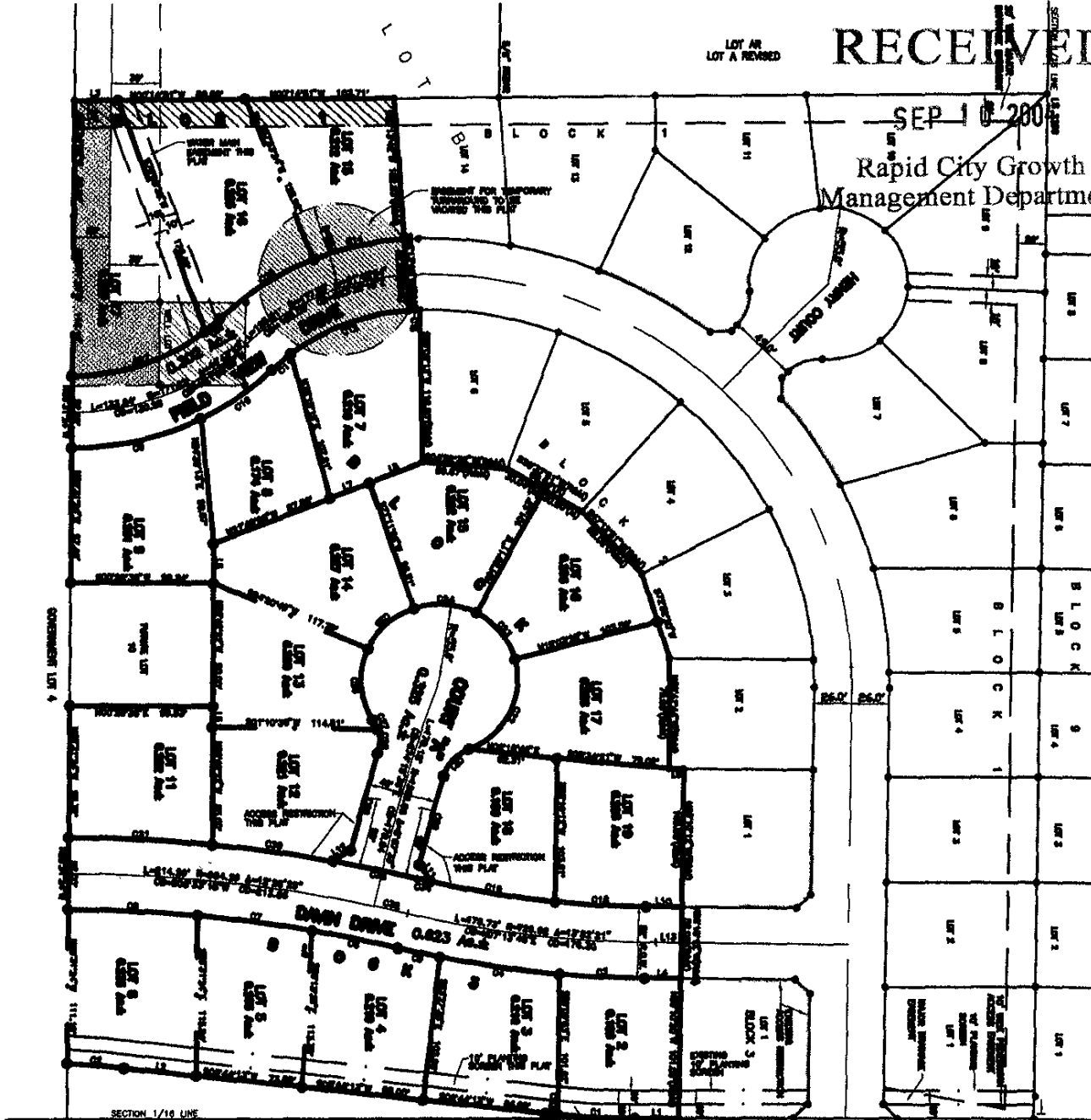
PLAT OF
**LOTS 15 THRU 17 OF BLOCK 1, LOTS 7 THRU 19 OF BLOCK 2,
 AND LOT 2 THRU 6 OF BLOCK 3,**
KENNSINGTON HEIGHTS SUBDIVISION
 (formerly a portion of Lot B of "Government" Lot 4)
 LOCATED IN "GOVERNMENT" LOT 4
 SECTION 18, T1N, R8E, BHM,
 RAPID CITY, PENNINGTON COUNTY, SOUTH DAKOTA

04SV077

RECEIVED

SEP 10 2004

Rapid City Growth
 Management Department



SEPTMBER 10, 2004
 N.T.S.

TRACT B OF PARCEL C
 MKK SUBDIVISION

UTILITY EASEMENTS AS
 SHOWN IN PLAT BOOK
 ST. PAGE 74

SEE VIEW
 UTILITY EASEMENTS

BLANCE OF TRACT A
 OF PARCEL C
 MKK SUBDIVISION