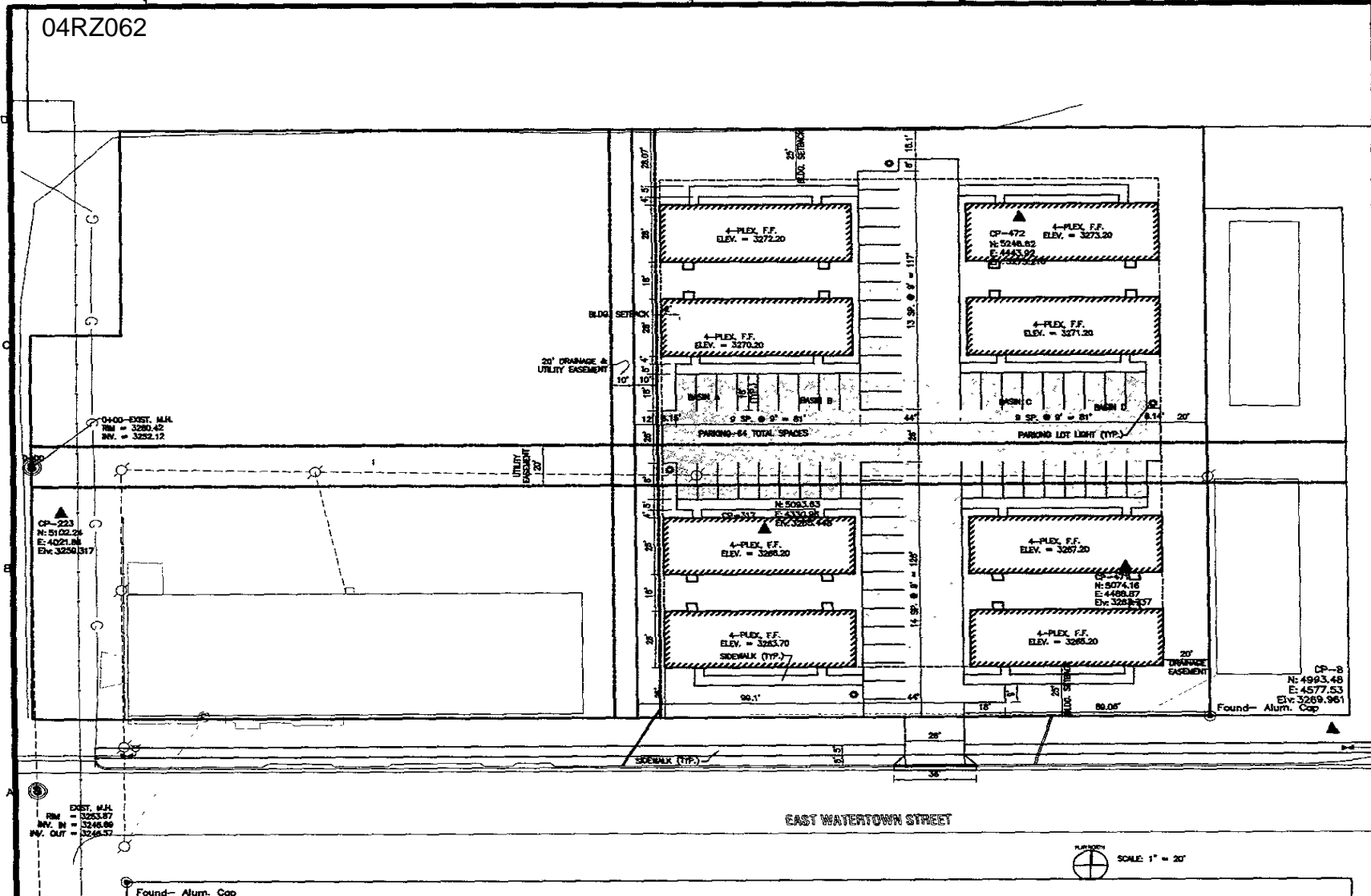


04RZ062



0400-EXIST. M.H.
 INV. = 3280.42
 INV. = 3252.12

CP-223
 N: 5162.24
 E: 4251.18
 Elev. 3250.317

EXIST. M.H.
 INV. IN = 3253.87
 INV. OUT = 3246.80
 INV. OUT = 3246.37

Found - Alum. Cap

20' DRAINAGE & UTILITY EASEMENT

UTILITY EASEMENT 12'

4-PLEX, F.F.
 ELEV. = 3272.20

4-PLEX, F.F.
 ELEV. = 3270.20

4-PLEX, F.F.
 ELEV. = 3269.20

4-PLEX, F.F.
 ELEV. = 3268.20

4-PLEX, F.F.
 ELEV. = 3273.20

4-PLEX, F.F.
 ELEV. = 3271.20

4-PLEX, F.F.
 ELEV. = 3267.20

4-PLEX, F.F.
 ELEV. = 3268.20

CP-8
 N: 4993.48
 E: 4577.53
 Elev. 3269.961
 Found - Alum. Cap

EAST WATERTOWN STREET

PLUMBING
 SCALE 1" = 20'



To Solve. To Excel. Together.

TSP Three, Inc.
 800 Kansas City Street
 Rapid City, SD 57701

phone: (605) 345-6102
 fax: (605) 345-7158
 www.tspthree.com

Architecture
 Engineering
 Construction

DATE: 11/11/11

DATE: 11/11/11

EAST WATERTOWN
 STREET 4-PLEXES
 RAPID CITY, SD

NO.	DESCRIPTION	DATE
1	PRELIMINARY	11/11/11
2	FINAL	11/11/11

CONSULTANT #
 DRAWN BY DCW
 CHECKED BY DCW

DATE: 11/11/11

SCALE: 1" = 20'

SITE LAYOUT PLAN

C-102