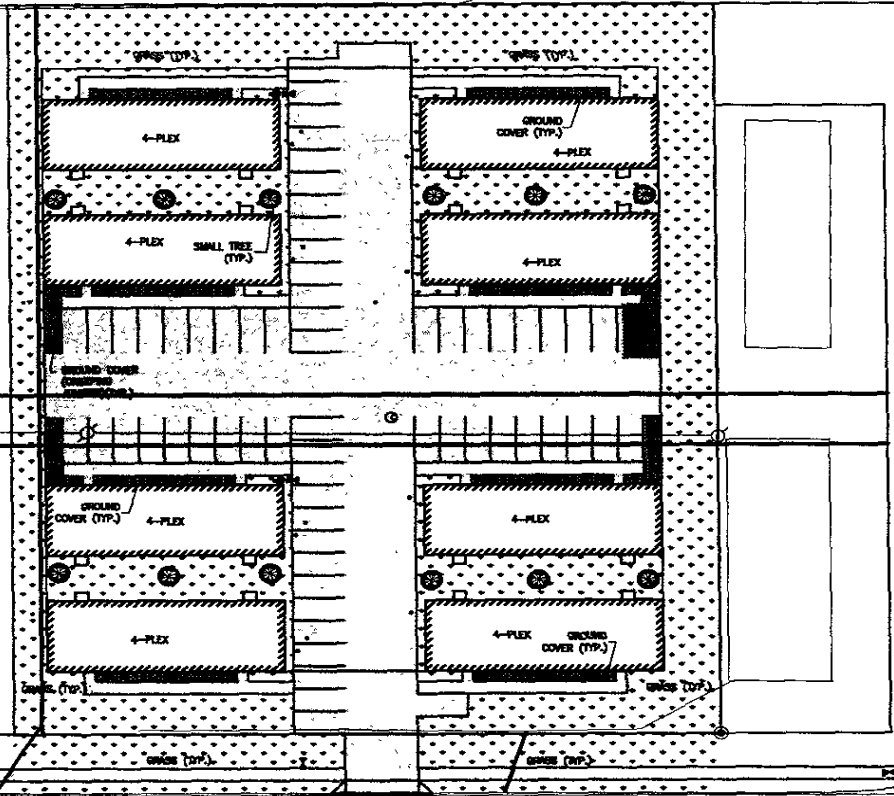


04PD081

Lot Area = 72,716 s.f. = 1,662 s.f.
 Bldg Area = 2301 X 8 = 18,408 s.f.
 Points Required = 53,908
 Points Provided
 Grass = 3272 sq. yd. = 32,720 pt.
 @ 10 pt./sq. yd.
 Ground Cover (Crawling Juniper)
 = 283 sq. yd. @ 100 pts./sq. yd. = 28,300 pt.
 Small Trees (Potsdam Ash)
 = 12 trees @ 500 pt./tree = 6000 pt.
 Total Points Provided = 65,020 pt.



EAST WATERTOWN STREET

PLAN NORTH
 SCALE: 1" = 20'



TSP Three, Inc.
 400 Kansas City Street
 Rapid City, SD 57701
 phone: (605) 345-6100
 fax: (605) 343-7150
 www.tspinc.com

Architecture
 Engineering
 Construction

EAST WATERTOWN
 STREET 4- PLEXES
 RAPID CITY, SD

PREPARED BY: TSP
 CHECKED BY: TSP
 DATE: 11/10/04

SHEET TITLE
 SITE LANDSCAPE
 PLAN

C-105

PRELIMINARY-NOT FOR CONSTRUCTION