

04PD076

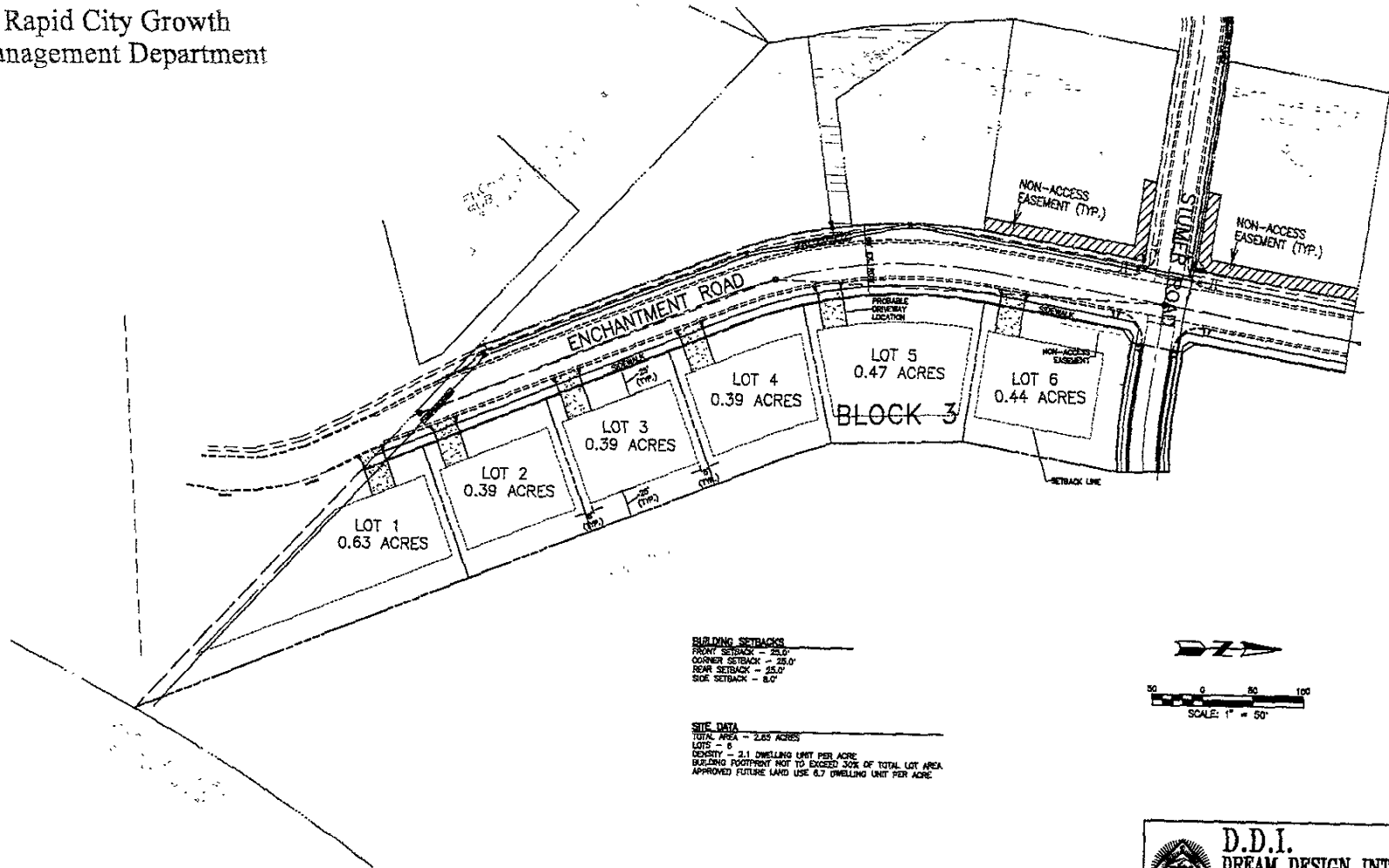
# RECEIVED

DEC 10 2004

Rapid City Growth  
Management Department

## PLANNED RESIDENTIAL DEVELOPMENT EASTRIDGE ESTATES SUBDIVISION

LOTS 1-6, BLOCK 3  
LOCATED IN THE NW1/4NE1/4, SECTION 24, T1N, R7E, S.H.M.,  
CITY OF RAPID CITY, PENNINGTON COUNTY, SOUTH DAKOTA



**BUILDING SETBACKS**  
 FRONT SETBACK - 25.0'  
 CORNER SETBACK - 25.0'  
 REAR SETBACK - 25.0'  
 SIDE SETBACK - 5.0'

**SITE DATA**  
 TOTAL AREA - 2.63 ACRES  
 LOTS - 6  
 DENSITY - 2.1 DWELLING UNIT PER ACRE  
 BUILDING FOOTPRINT NOT TO EXCEED 30% OF TOTAL LOT AREA  
 APPROVED FUTURE LAND USE 0.7 DWELLING UNIT PER ACRE



**D.D.I.**  
**DREAM DESIGN INTERNATIONAL, INC.**  
 PROFESSIONAL STRUCTURAL & CIVIL ENGINEERING CONSULTANTS

408 KAPLAN CITY ST., SUITE 4, RAPID CITY, SD 57701  
 PH. 605-345-0282 FAX 605-345-0545 EMAIL ddream@dreamdesigninc.com