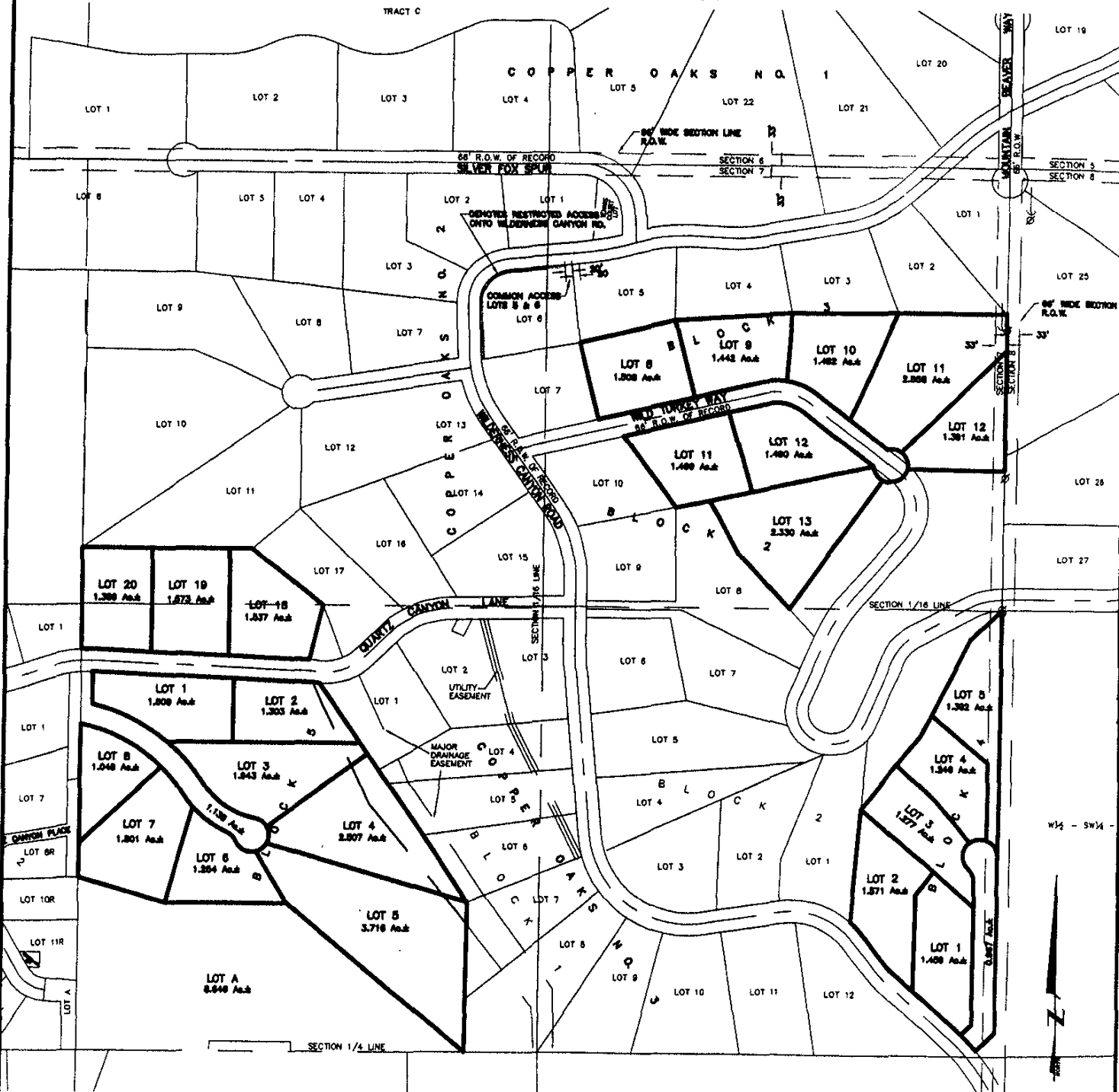


**PLAT OF
 LOTS 18 THRU 20 OF COPPER OAKS SUBDIVISION NO. 2,
 LOTS 11 THRU 13 OF BLOCK 2, LOTS 8 THRU 12 OF BLOCK 3,
 LOTS 1 THRU 5 OF BLOCK 4, LOTS 1 THRU 8 OF BLOCK 5 AND LOT A,
 COPPER OAKS SUBDIVISION NO. 3**

04SV053

LOCATED IN THE NE $\frac{1}{4}$,
 SECTION 7, T1S, R7E, BHM,
 PENNINGTON COUNTY, SOUTH DAKOTA



SEPTEMBER 21, 2004
 SCALE: 1" = 400'