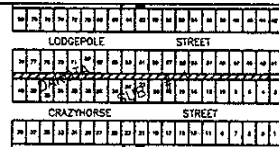


04RZ057

ABRAMS

SUB.



PROJECT SITE

10
MCMAHON INDUSTRIAL



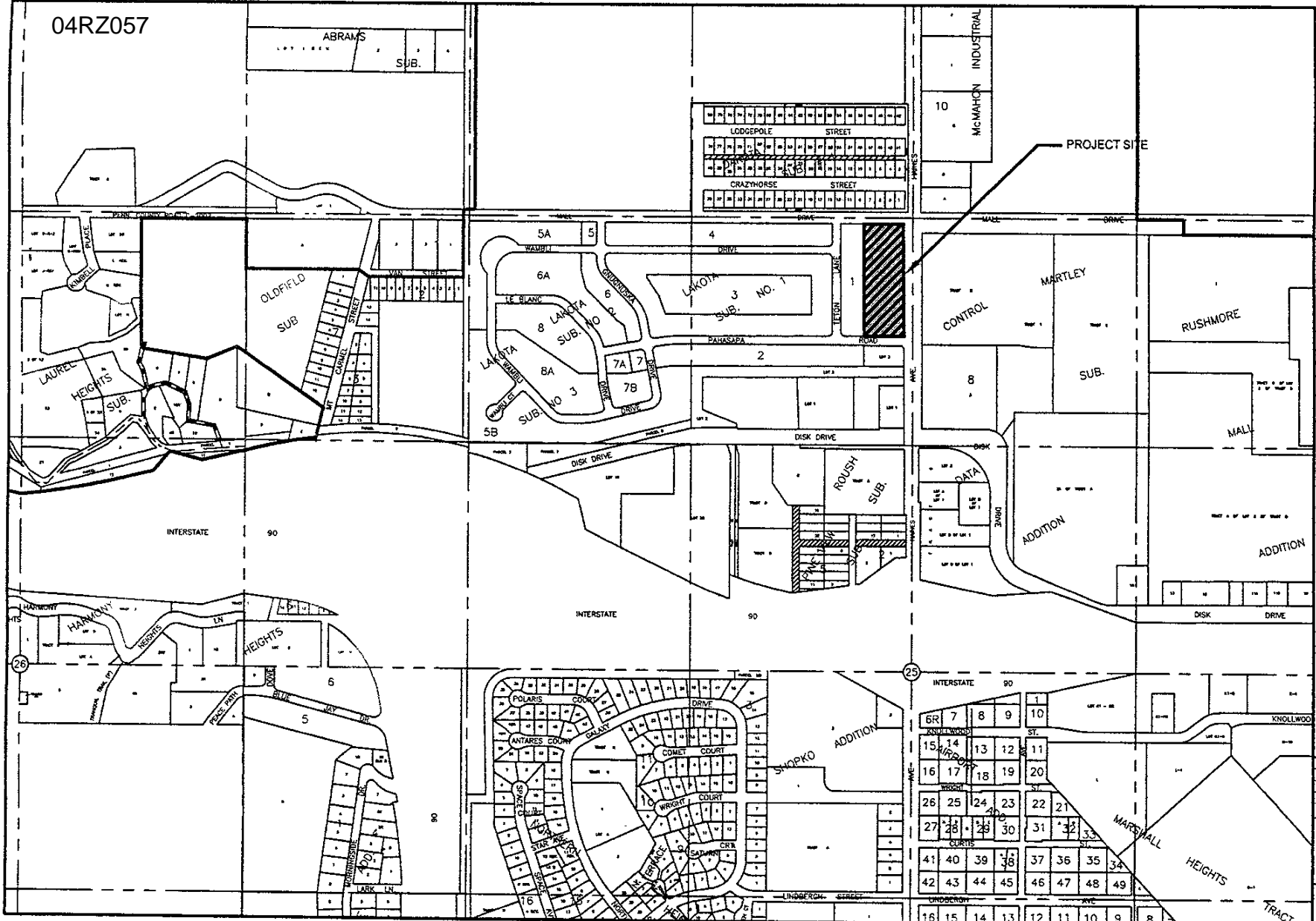
File Number: 04RZ057
 Location: 1/4 Sec 14, T14N, R10W, S14
 Surveyed by: [unclear]
 Date: [unclear]
 Developed by: [unclear]
 Drawn by: [unclear]
 Checked by: [unclear]

INITIAL PLANNED DEVELOPMENT
 F & A PROPERTIES COMMERCIAL DEVELOPMENT
 RAPID CITY, SD

MONTHY MAP

Sheet Number

1 of 1



VICINITY MAP

SCALE: 1" = 800'