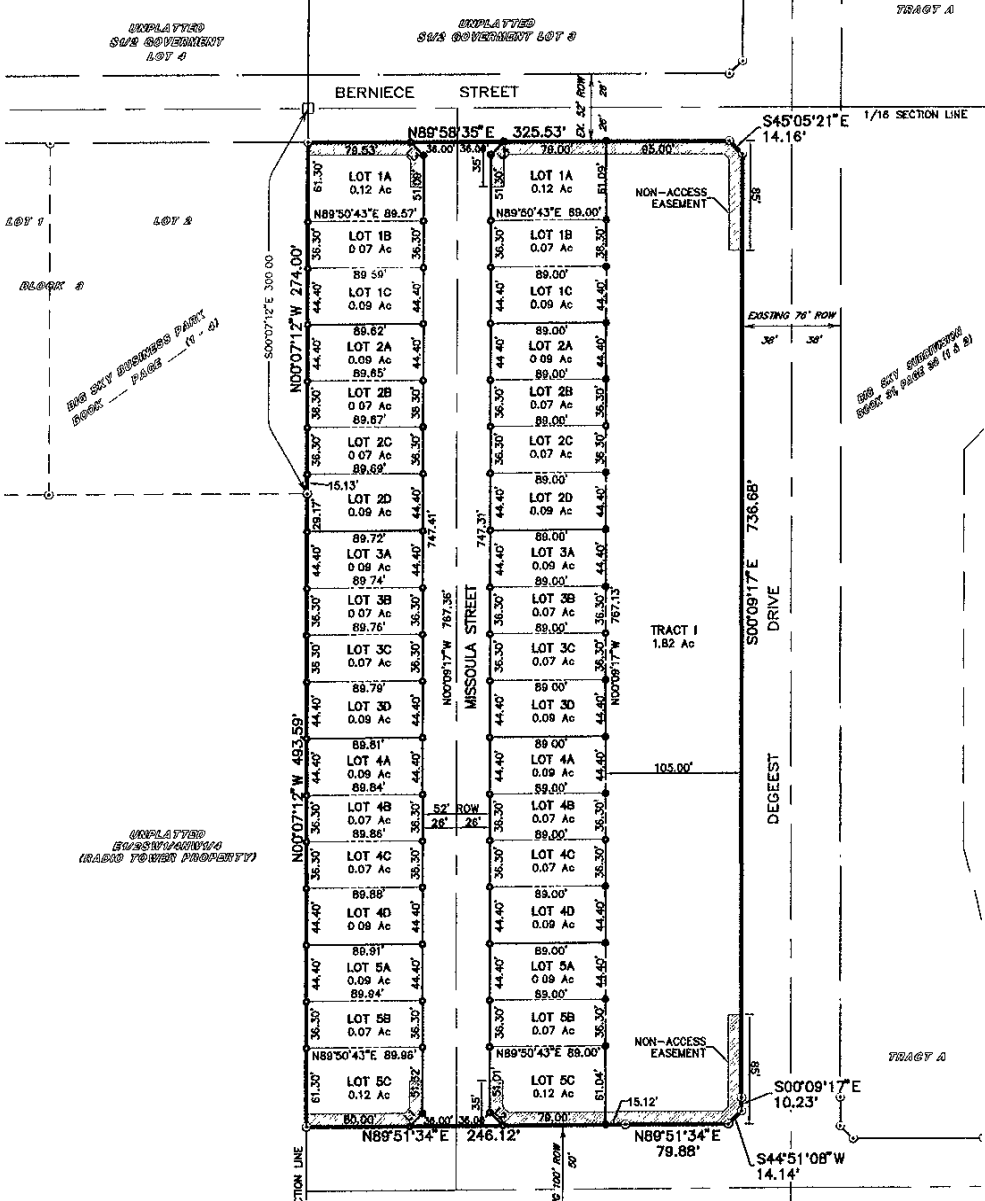


# BIG SKY SUBDIVISION

REPLAT OF TRACT I  
 LOTS 1A-5A, 1B-5B, 1C-5C, AND 2D-4D BLOCK 21, AND LOTS 1A-5A, 1B-5B, 1C-5C, AND 2D-4D BLOCK 22,  
 RESIDING WITHIN SE1/4NW1/4 OF SECTION 5, T1N, R0E, B.H.L.M.,  
 CITY OF RAPID CITY, PENNINGTON COUNTY, SOUTH DAKOTA



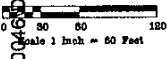
046 Drawings/Pictoral/04-0046FP.dwg, 15X26 SHEET 1, 11/12/2004 2:32:45 PM, 1:2.31041

**LEGEND**

- DENOTES SET 5/8" REBAR WITH SURVEY CAP MARKED "RLS 3977"
- DENOTES FOUND 5/8" REBAR WITH SURVEY CAP MARKED "RLS 3977"
- DENOTES FOUND SURVEY MONUMENT AS NOTED

**NOTES:**

1. MINOR DRAINAGE AND UTILITY EASEMENTS ARE HEREBY ESTABLISHED 8' WIDE ON THE INTERIOR SIDE OF ALL LOT LINES AND RIGHT-OF-WAY. (EXCEPT WHERE MAJOR DRAINAGE EASEMENTS ARE LOCATED)
2. TOTAL PLATTED AREA: 5.91 ACRES; LOTS: 4.99 ACRES DEDICATED PUBLIC ROW: 0.92 ACRES
3. ANY MAJOR DRAINAGE EASEMENT SHOWN HEREON SHALL BE KEPT FREE OF ALL OBSTRUCTIONS INCLUDING BUT NOT LIMITED TO BUILDINGS, WALLS, FENCES, HEDGES, TREES, AND SHRUBS. THESE EASEMENTS GRANT TO ALL PUBLIC AUTHORITIES THE RIGHT TO CONSTRUCT, OPERATE, MAINTAIN, INSPECT AND REPAIR SUCH IMPROVEMENTS AND STRUCTURES AS IT DEEMS EXPEDIENT TO FACILITATE DRAINAGE FROM ANY SOURCE.
4. NON-ACCESS EASEMENTS ARE HEREBY ESTABLISHED ALONG THE FIRST FIFTY FEET OF CORNER LOTS OR AS INDICATED HEREON.



PREPARED BY:  
**ARLETH & ASSOCIATES**

382 MAIN STREET  
 DEADWOOD, SD 57732  
 605-678-1637

JOB NO  
 04-0046

DATE: 11/10/04  
 SCALE:  
 DRAWN: RDC

APPROVED: JMA  
 DWG. 04-0046FP.DWG

PREPARED FOR  
 DREAM DESIGN INTERNATIONAL, INC  
 628 KANSAS CITY STREET, SUITE 4  
 RAPID CITY, SOUTH DAKOTA 57701  
 (605) 348-6588