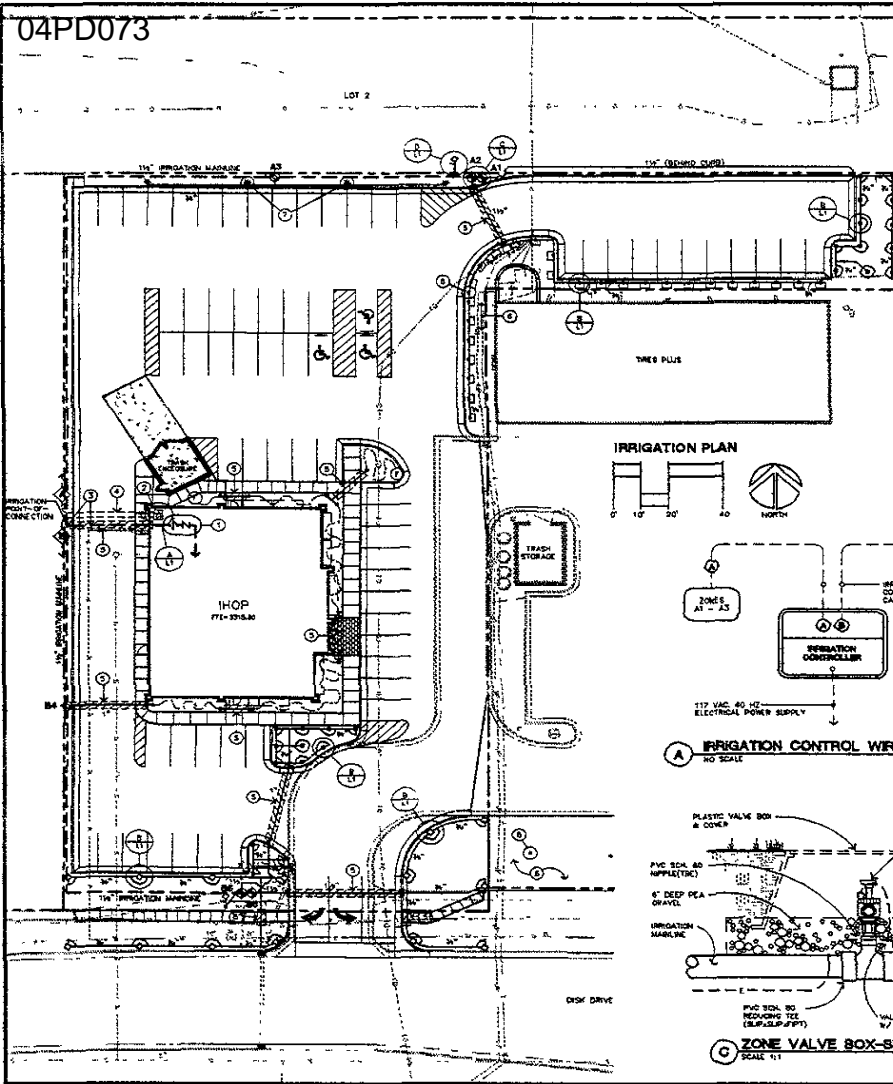


04PD073



IRRIGATION EQUIPMENT SCHEDULE

KEY	QUANTITY	EQUIPMENT DESCRIPTION	TECHNICAL INFORMATION
		BLDG PLUMBING	REFER TO PLUMBING PLAN
		BLDG PLUMBING	REFER TO PLUMBING PLAN
	1 EA.	B STATION CONTROLLER	RAINBOW ESP-L3-B TORO 7P-00-0
	2 EA.	QUICK COUPLER VALVE	RAINBOW 44RC TORO 100-21VC
	4 EA.	VALVE BOX & COVER	RAVESH NO. 48104 CARRON NO. 910-12
	1 EA.	1/2\"/>	
	14 EA.	TURF ROTOR	RAINBOW 226A-40-3 TORO 376A-40-3-FA
	25 EA.	TURF SPRAY HEAD	RAINBOW 182A-10-1/2 TORO 376Z-4P-10-1/2
	28 EA.	23\"/>	

IRRIGATION PIPE SCHEDULE

KEY	QUANTITY	EQUIPMENT DESCRIPTION	TECHNICAL INFORMATION
	240 LF (VERIFY)	IRRIGATION SLEEVE (2\"/>	
	280 LF (VERIFY)	1 1/2\"/>	
	230 LF (VERIFY)	1 1/2\"/>	
	210 LF (VERIFY)	1\"/>	
	830 LF (VERIFY)	3/4\"/>	
	600 LF (VERIFY)	IRRIGATION CONTROL CABLE	PAIGE-18 GAUGE-8 CONDUCTOR, COLOR CODED, TYPE TO-DIRECT BURY

DRIP IRRIGATION EQUIPMENT SCHEDULE

KEY	QUANTITY	EQUIPMENT DESCRIPTION	TECHNICAL INFORMATION
	3 EA.	CONTROL ZONE KIT	RAINBOW VCE-101 OSM
	4 EA.	25\"/>	
	370 LF	LANDSCAPE DRIFLINE (0.6 GPH @ 24\"/>	
	2 EA.	TUBING END CLOSURE	RAINBOW 700-07-21

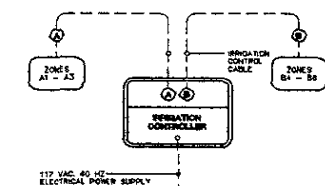
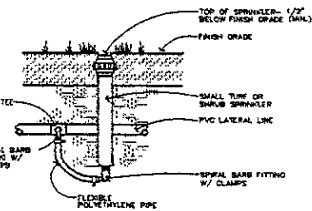
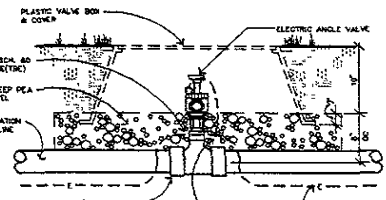
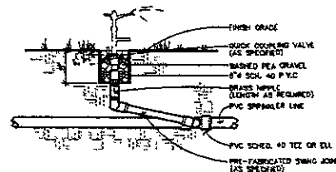
IRRIGATION NOTES:

- UNDERGROUND UTILITIES: THE CONTRACTOR IS RESPONSIBLE TO VERIFY ALL UNDERGROUND UTILITIES PRIOR TO CONSTRUCTION. NOTIFY OWNER REPRESENTATIVE OF ANY DISCREPANCY OR UNKNOWN UTILITIES. ONE CALL NOTIFICATION: 800-798-7474.
- ALL CONSTRUCTION TO BE IN ACCORDANCE WITH APPLICABLE CODES. NOTINGS IN THESE DRAWINGS SHALL BELIEVE THE CONTRACTOR FROGE COOPERING WITH ALL APPLICABLE SAFETY REGULATIONS.
- ALL IRRIGATION PIPING & EQUIPMENT TO BE INSTALLED IN ACCORDANCE WITH STANDARDS AS ESTABLISHED BY THE IRRIGATION ASSOCIATION.
- QUANTITIES PROVIDED ON DRAWINGS ARE FOR INFORMATION ONLY. CONTRACTOR IS RESPONSIBLE FOR DETERMINING ACTUAL QUANTITIES OF ALL MATERIALS, EQUIPMENT & SUPPLIES REQUIRED TO COMPLETE PROJECTS.
- THIS SYSTEM WAS DESIGNED FOR A 40 P.S.I. STATIC WATER PRESSURE AND 40 G.P.M. UNLESS INDICATED OTHERWISE ON PLAN. SHOULD THE PRESSURE AND GALLONS BE LESS THAN THIS, NOTIFY THE ARCHITECT BEFORE PROCEEDING WITH THE INSTALLATION.
- SOIL & LIQUID ANALYSIS: LOCATIONS FOR SOILS, LIQUID ANALYSIS & ELECTRICAL UTILITIES ARE PROVIDED AS PER ARCHITECTURAL PLANS. IRRIGATION SYSTEM MAY NEED TO BE REVISED ACCORDINGLY.

IRRIGATION KEY NOTES:

- IRRIGATION BACKFLOW PREVENTER & BLOW-OUT VALVE ARE TO BE INSTALLED IN MECHANICAL ROOM BY OTHERS (SEE PLUMBING PLAN).
- INSTALL IRRIGATION CONTROLLER IN MECHANICAL ROOM. COORDINATE INSTALLATION OF 120 VOLT AC POWER SUPPLY W/ ELECTRICAL CONTRACTOR.
- EXTEND 5/8\"/>
- EXTEND 1/2\"/>
- INSTALL SCHEDULE 40 PVC SLEEVES 18\"/>
- EXISTING SPRINKLERS: COORDINATE EXISTING IRRIGATION SYSTEM WITH OTHER REPRESENTATIVE.
- REF. BURNERS: COORDINATE LOCATION WITH TREE PLANTINGS.

IRRIGATION PLAN

A IRRIGATION CONTROL WIRING DIAGRAMS
NO SCALEB TURF SPRINKLER ASSEMBLY
NO SCALEC ZONE VALVE BOX-SINGLE
SCALE 1/4\"/>


GENERAL NOTES:
FURNISH FITTINGS AND PIPING NORMALLY SIZED IDENTICAL TO NOMINAL QUICK COUPLER VALVE KIT LIST.

D QUICK COUPLING VALVE
SCALE 1/4\"/>


TFC Mechanical
225 West Joseph St.
Chandler, AZ 85070
Tel: 480-948-7200
Fax: 602-984-9588

IRRIGATION PLAN & DETAILS
IHOP RESTAURANT
PHOENIX, ARIZONA

Project No.: 04-244
File No.: 11-280-14
Drawn By: JLG
Checked By: JLF
Date: 11-08-04
Revised:

These drawings were prepared by TFC Mechanical, Inc. for the project identified above. It is the responsibility of the user of these drawings to verify that they are applicable to the project and that all necessary permits have been obtained. TFC Mechanical, Inc. is not responsible for any errors or omissions in these drawings.

L1