

LAYOUT PLAT OF LOT BR, SCHOENHARD SUBDIVISION LOT 6R, MANN SUBDIVISION

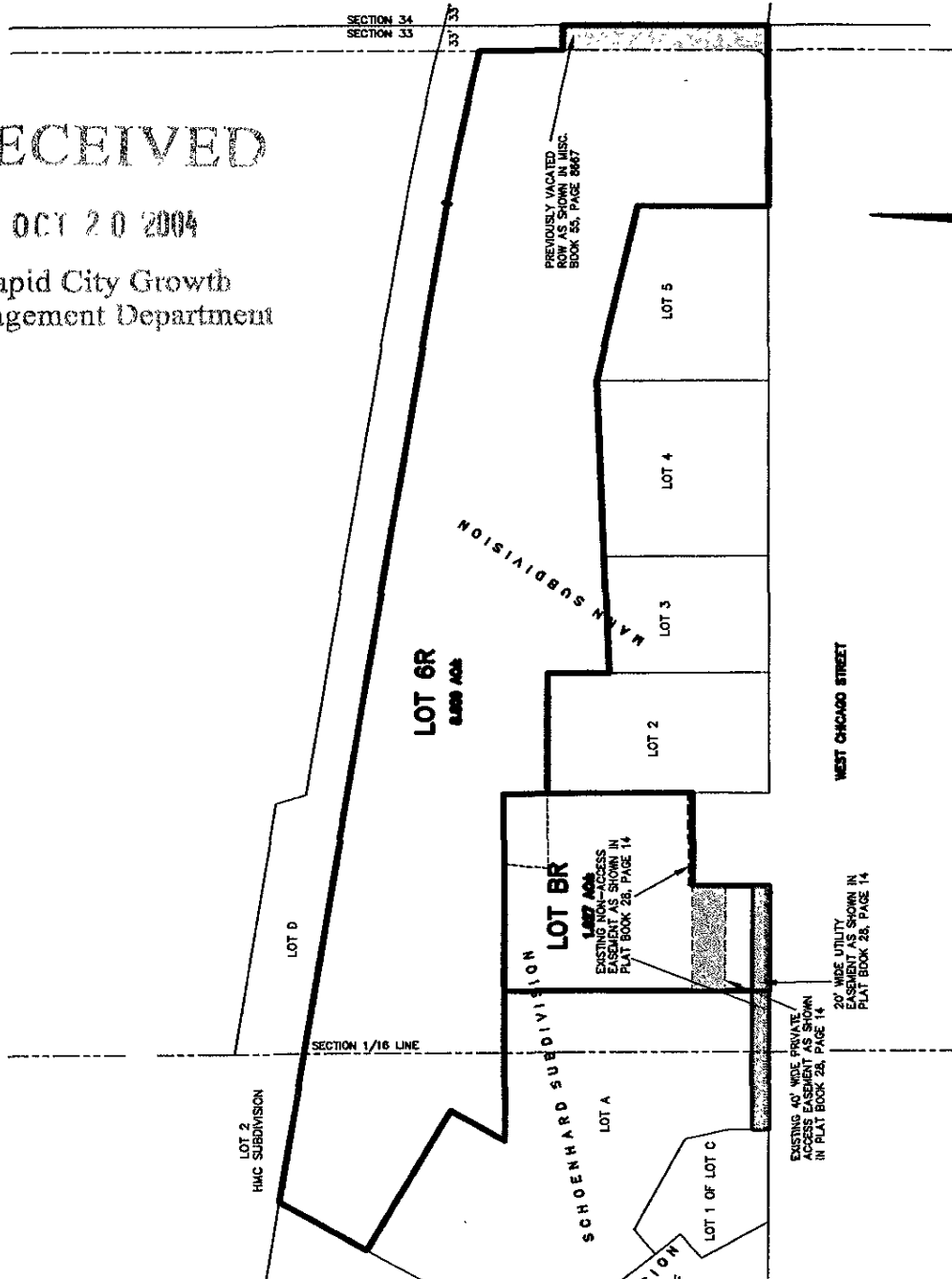
(formerly Lot B of Schoenhard Subdivision and
Lot 6 of Mann Subdivision.)

Located IN THE NE1/2 OF SE1/4,
SECTION 33, T2N, R7E, BHM
RAPID CITY, PENNINGTON COUNTY, SOUTH DAKOTA

RECEIVED

OCT 20 2004

Rapid City Growth
Management Department



Renner Associates, LLC.

616 Sixth St. * Rapid City, SD 57701 * 605/721-7310
FAX: 605/721-7313 * E-MAIL: Gary@RennerAssoc.com
* Spearfish 605/717-0016 *