

04SR057

**RAILROAD
SECONDARY SEWER ALIGNMENT**

MN 11 BOP STA 0+00.00
N = 649711.7239
E = 1216261.3383

MN 10 STA 1+84.85
N = 649527.2269
E = 1216254.7818

MN 9 STA 2+43.18
N = 649403.3821
E = 1216251.8243

MN 8 STA 3+05.18
N = 649290.0774
E = 1216252.8581

MN 7 STA 10+68.41
N = 648794.7202
E = 1217072.7290

MN 6 STA 16+84.37
N = 648710.7071
E = 1217423.3701

MN 5 STA 15+74.38
N = 648906.2633
E = 1217454.2692

MN 4 STA 17+43.21
N = 649296.3134
E = 1217822.8709

MN 3 STA 21+18.83
N = 648794.7202
E = 1217945.8364

MN 2 STA 25+14.38
N = 648906.2633
E = 1218283.2932

MN 1 STA 27+80.81
N = 648854.8754
E = 1218308.0938

EDP STA 31+32.43
N = 648182.9480
E = 1218924.3229

**RICE VALLEY VIEW
SECONDARY SEWER ALIGNMENT**

MN 31 BOP STA 0+00.00
N = 649498.3387
E = 1217022.7009

MN 30 BOP STA 2+28.03
N = 649286.0724
E = 1218023.8891

**CAMPBELL SQUARE
SECONDARY SEWER ALIGNMENT**

MN 4 BOP STA 0+00.00
N = 648896.3134
E = 1217822.8709

MN 41 EOP STA 2+88.92
N = 649286.0724
E = 1217822.8704

**MANOR HOUSE
SECONDARY SEWER ALIGNMENT**

MN 21 BOP STA 0+00.00
N = 648966.8542
E = 1216300.1809

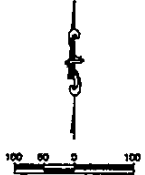
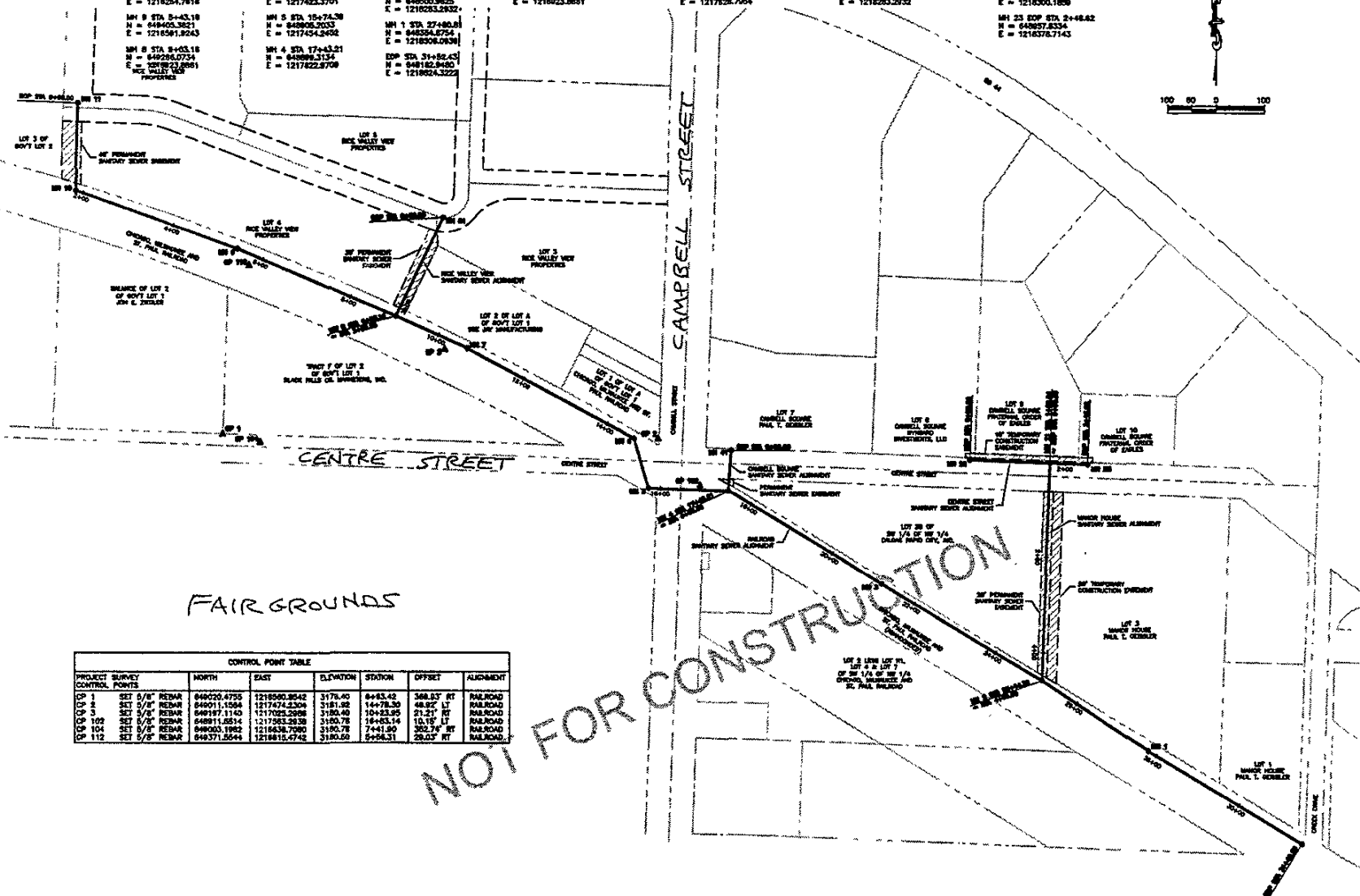
MN 2 EOP STA 4+88.98
N = 649003.8025
E = 1216263.2932

**CENTRE STREET
SECONDARY SEWER ALIGNMENT**

MN 22 BOP STA 0+00.00
N = 648966.8542
E = 1216132.2503

MN 21 STA 1+88.04
N = 648983.8432
E = 1216300.1809

MN 23 EOP STA 2+88.42
N = 648937.8334
E = 1216376.7143



FAIR GROUNDS

NOT FOR CONSTRUCTION

CONTROL POINT TABLE

| PROJECT CONTROL POINTS | | NORTH | EAST | ELEVATION | STATION | OFFSET | ALIGNMENT |
|------------------------|----------------|-------------|--------------|-----------|----------|-----------|-----------|
| CP 1 | SET 5/8" REBAR | 649026.4755 | 1218580.8848 | 3176.40 | 8+43.40 | 588.87 FT | RAILROAD |
| CP 2 | SET 5/8" REBAR | 649011.1586 | 1217474.2306 | 3181.82 | 14+78.50 | 48.92 FT | RAILROAD |
| CP 3 | SET 5/8" REBAR | 649197.1140 | 1217023.2898 | 3180.40 | 10+23.95 | 21.21 FT | RAILROAD |
| CP 102 | SET 5/8" REBAR | 648911.8234 | 1217883.2838 | 3195.78 | 16+45.14 | 10.18 FT | RAILROAD |
| CP 104 | SET 5/8" REBAR | 649003.1982 | 1216438.7980 | 3190.78 | 7+41.80 | 303.78 FT | RAILROAD |
| CP 112 | SET 5/8" REBAR | 649371.5544 | 1219815.4742 | 3180.50 | 5+04.31 | 28.03 FT | RAILROAD |



Ferber Engineering, Inc.
111 S. PARKWAY, SUITE 100, WAKE FOREST, NC 27158
TEL: 919.554.1111 FAX: 919.554.1111

DATE: AS SHOWN
DESIGNED BY: [Redacted]
DRAWN BY: [Redacted]
CHECKED BY: [Redacted]
DATE: [Redacted]

CENTRE STREET SEWER EXTENSION
SURVEY CONTROL SHEET
4 of 15