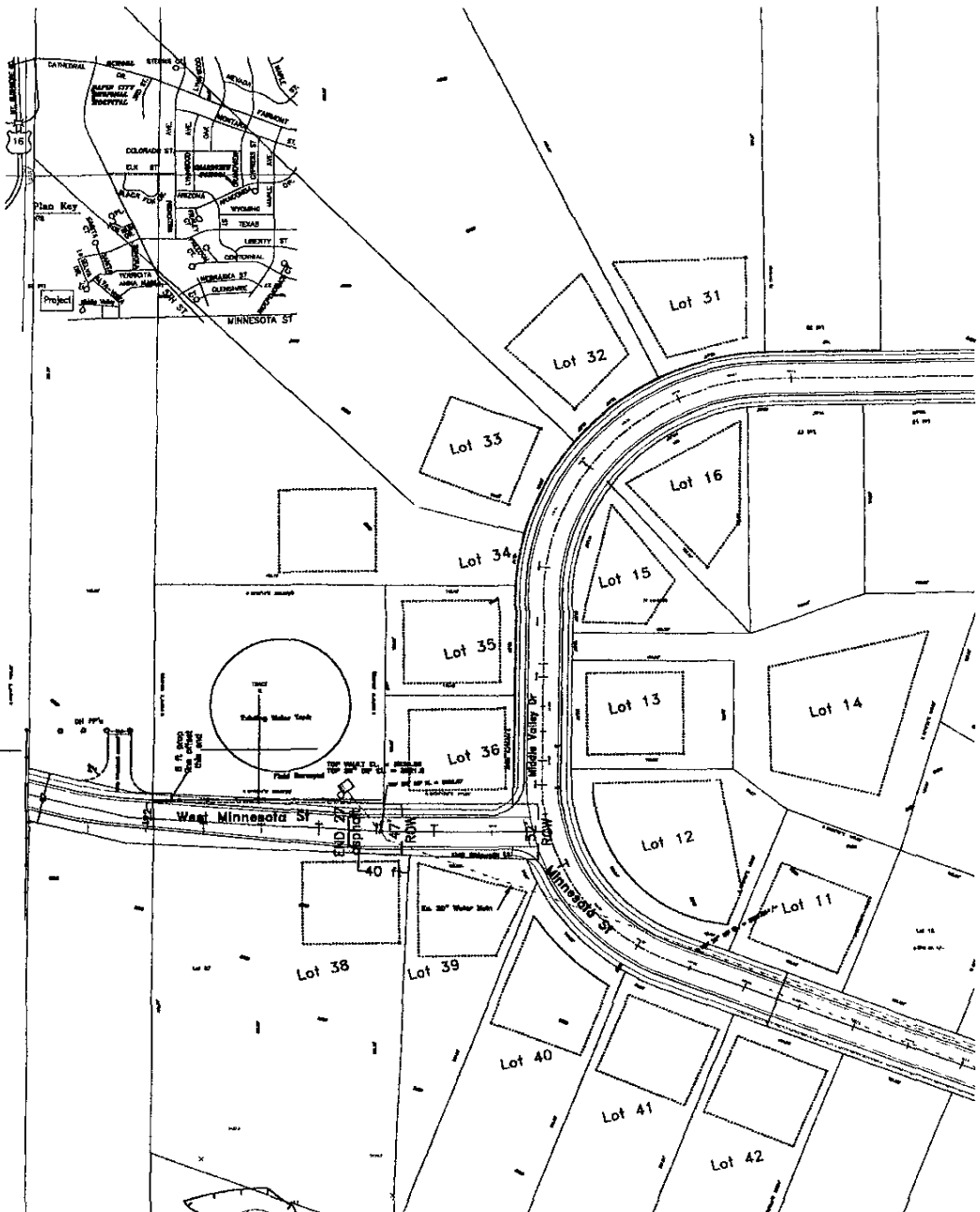




636,000 M



Minnesota Ridge Heights Subdivision - Planned Residential Criteria: Phase 4 C
31's LLC PO Box 2824 Rapid City, SD 57709

Setbacks: **Front:** 18' to Garage; 15' to Structure **Side:** 8' **Rear:** 25'
Landscape: Conventional shrubs, trees and plants for residential lots.
Lighting: Entry way, low wattage yard light & standard street lights.
Exteriors: Stone, brick, wood, driveway and siding: earth-tone colors.

| | | |
|--|---|-------------------------|
| | CENTERLINE | project no. : 03984CPRD |
| | 731 St. Joe Street, Suite 120, Rapid City, SD 57701 | date: 9-24-04 |
| | Phone: (605) 341-3193 Fax: (605) 341-3358 | file: 0398 |
| | centrlime@aol.com | sheet: 1 |
| | | |