



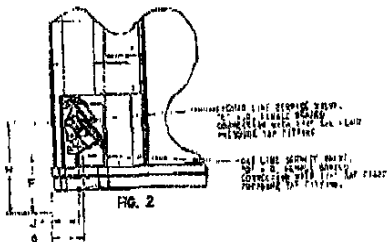
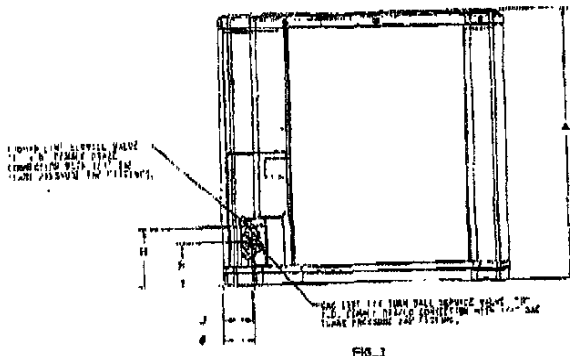
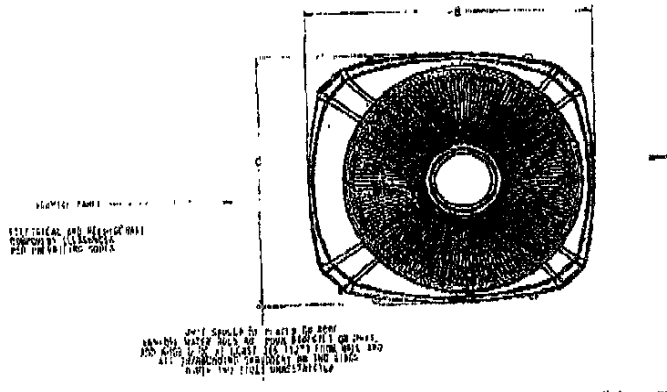
(2)

2TTR2042-SUB-100.00

TAG: _____

SUBMITTAL

NOTE: All dimensions are in mm/inches.



MODEL	BASE	FIG.	A	B	C	D	E	F	G	N	J	K
			692	828	758			149	92	210	79	508

**3 1/2 Ton Split System
 Cooling — 1 Phase
 2TTR2042B**

Outdoor Unit (2) 2TTR2042B1000A

General Data

SOUND RATING (DECIBELS) (2)	79
POWER CONNS. - V/PH/Ø	208/230/1/Ø
MIN. BRCH. CIR. AMPACITY	23
BR. CIR. } MAX. (AMPS)	40
PROT. RTG. } MIN. (AMPS)	18
COMPRESSOR	CLIMATUFF™ - SCROLL
NO. USED - NO. SPEEDS	1 - 1
VOLTS/PH/Ø	208/230/1/Ø
R.L. AMPS (1) - L.R. AMPS	17.8 - 104
FACTORY INSTALLED	
START COMPONENTS (2)	NO
INSULATION/SOUND BLANKET	NO
COMPRESSOR HEAT	NO
OUTDOOR FAN - TYPE	PROPELLER
DIA. (IN.) - NO. USED	23 - 1
TYPE DRIVE - NO. SPEEDS	DIRECT - 1
CFM @ 0.0 IN. W.G. (2)	2700
NO. MOTORS - HP	1 - 1/8
MOTOR SPEED R.P.M.	825
VOLTS/PH/Ø	200/230/1/Ø
R.L. AMPS	0.9
OUTDOOR COIL - TYPE	SPINE FIN™
ROWS - FPL	1 - 24
FACE AREA (SQ. FT.)	15.16
TUBE SIZE (IN.)	3/8
REFRIGERANT	R-22
(O.D. UNIT) NP CHRG. (2)	3/08-LB/OZ
FACTORY SUPPLIED	YES
LINE SIZE - IN. O.D. GAS (2)	7/8
LINE SIZE - IN. O.D. LIQ. (2)	3/8
FCY	
RESTRICTOR ORIFICE SIZE	0.077
DIMENSIONS	M X W X D
OUTDOOR UNIT CRATED (IN.)	38 X 50.1 X 59.8
UNCRATED	SEE OUTLINE DWG.
WEIGHT	
SHIPPING (LBS.)	218
NET (LBS.)	188

- NOTE:
- (1) CERTIFIED IN ACCORDANCE WITH THE MILITARY AIR-CONDITIONER EQUIPMENT CERTIFICATION PROGRAM WHICH IS BASED ON A.S.I. STANDARD Z10240.
 - (2) RATED IN ACCORDANCE WITH A.S.I. STANDARD Z10.
 - (3) CALCULATED IN ACCORDANCE WITH NATIONAL ELECTRIC CODES. ONLY USE HORN CIRCUIT BREAKERS OR PLUGS.
 - (4) STANDARD AIR - DRY COIL - OUTDOOR
 - (5) THIS VALUE APPLICABLE FOR 100% PRECISE VALUE SEE UNIT NAMEPLATE AND SERVICE INSTRUCTION.
 - (6) MAX. LINEAR LENGTH (AM FT) WITH RECIPROCATING COMPRESSOR - 66 FT WITH SCROLL. MAX. LIFT - 50 FT; MAX. LIFT - LIQUID (6 FT. FOR GREATER LENGTH REFER TO REFRIGERANT PIPING SOPHWARE PUBL. NO. 22-581201).
 - (7) THE VALUE SHOWN FOR COMPRESSOR P.L.A. ON THE UNIT NAMEPLATE AND ON THIS SPECIFICATION SHEET IS USED TO COMPUTE MINIMUM BRANCH CIRCUIT AMPACITY AND MAXIMUM FUSE SIZE. THE VALUE SHOWN IS THE BRANCH CIRCUIT SELECTION CURRENT.
 - (8) NO MEANS NO START COMPONENTS, YES MEANS QUICK START KIT COMPONENTS. P.T.C. MEANS POSITIVE THERMISTATE COEFFICIENT STARTER.
 - (9) RATED IN ACCORDANCE WITH AIR STANDARD Z10 SECTION 3.3.6.

60 HZ

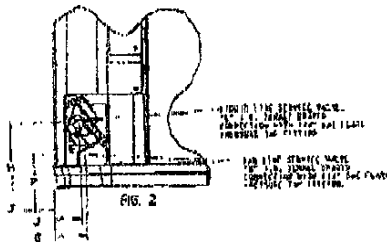
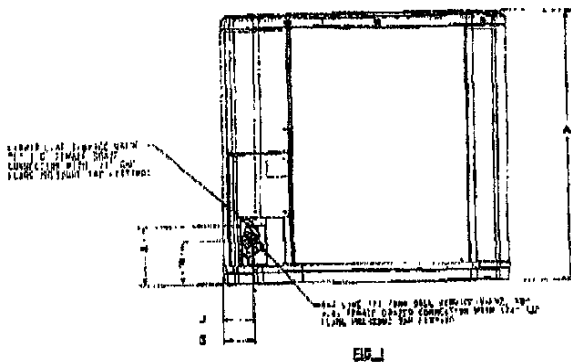
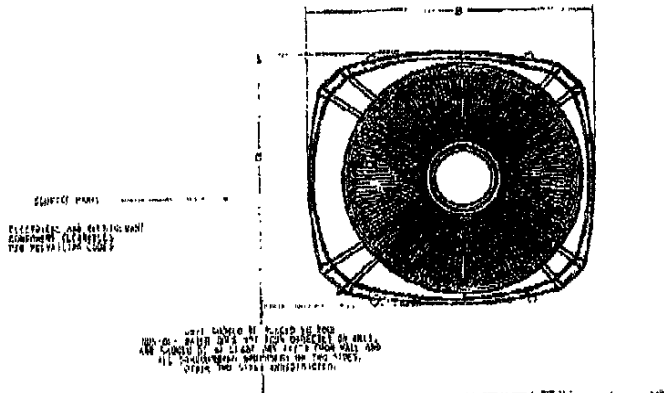


2TTR2048-SUB-100.00

TAG: _____

SUBMITTAL

NOTE: All dimensions are in mm/inches.



MODELS	BASE	FIG.	A	B	C	D	E	F	G	H	J	K
2TTR2048A	3	1	853 (33-9/16)	429 (16-9/16)	758 (29-7/8)	1-1/8	3/8	1-1/2 (3-1/2)	1-1/2 (3-1/2)	2-1/2 (5-1/4)	7-1/2 (29)	506

From Dwg. 21DT52098 Rev. 4

© 2002 American Standard Inc. All Rights Reserved

4 Ton Split System Cooling — 1 Phase
2TTR2048A

Outdoor Unit 2TTR2048A1000A

General Data

SOUND RATING (DECIBELS) @ 70	
POWER CONN. — V/PH/Hz @ 208/230/1/60	
MIN. BRCH. CIR. CAPACITY 26	
BR. CIR. } MAX. (AMPS) 46	
FROTL RTG. } MIN. (AMPS) 40	
COMPRESSOR CLIMATEFF - SCROLL	
NO. USED - NO. SPEEDS 1 - 1	
VOLTS/PH/Hz 208/230/1/60	
R.L. AMPS @ - L.R. AMPS 18.3 - 137	
FACTORY INSTALLED	
START COMPONENTS @ NO	
INSULATION/SOUND BLANKET NO	
COMPRESSOR HEAT NO	
OUTDOOR FAN — TYPE PROPELLER	
DIA. (IN.) - NO. USED 23 - 1	
TYPE DRIVE - NO. SPEEDS DIRECT - 1	
CFM @ 0.0 R.L. W.G. @ 3400	
NO. MOTORS - HP 1 - 1/8	
MOTOR SPEED R.R.M. 885	
VOLTS/PH/Hz 208/230/1/60	
FL. AMPS 1.4	
OUTDOOR COIL — TYPE SPIRE FINTH	
ROWS - P.A.L. 1 - 24	
FACE AREA (SQ. FT.) 21.25	
TUBE SIZE (IN.) 3/8	
REFRIGERANT R-22	
(O.D. UNIT) HP CHRG. @ 7/284.8/02	
FACTORY SUPPLIED YES	
LINE SIZE - IN. O.D. GAS @ 1-1/8	
LINE SIZE - IN. O.D. LIQ. @ 3/8	
PCV 0.086	
RESTRICTOR ORIFICE SIZE 0.086	
DIMENSIONS H X W X D	
OUTDOOR UNIT CRATED (IN.) 42 X 36.1 X 83.0	
UNCRATED SEE OUTLINE DWG.	
WEIGHT	
SHIPPING (LBS.) 248	
NET (LBS.) 219	

- NOTES
- ① CERTIFIED IN ACCORDANCE WITH THE UNITARY AIR-CONDITIONER EQUIPMENT CERTIFICATION PROGRAM WHICH IS BASED ON A.S.I. STANDARD 310940.
 - ② RATED IN ACCORDANCE WITH A.S.I. STANDARD 310.
 - ③ CALCULATED IN ACCORDANCE WITH NATIONAL ELECTRICAL CODE. DO NOT USE HIGH CIRCUIT BREAKERS OR FUSES.
 - ④ STANDARD AIR - DRY COOL - OUTDOOR
 - ⑤ B-48 VALVE APPROPRIATE. FOR MORE PRECISE VALUE SEE UNIT NAMEPLATE AND SERVICE INSTRUCTION.
 - ⑥ MAXIMUM LENGTH OF PIPE WITH REPRODUCTION COMPRESSOR - 80 FT WITH SCROLL MAX LENGTH - 50 FT WITH R/L AX UNIT - LIQUID 64 FT FOR 60 FT OR GREATER LENGTH REFER TO REFRIGERANT PIPING CODE PAGES PUB. NO. 30-212-01.
 - ⑦ THE VALUE SHOWN FOR COMPRESSOR R.L.A. ON THE UNIT NAMEPLATE AND ON THIS SPECIFICATION SHEET IS USED TO COMPUTE MINIMUM BRANCH CIRCUIT CAPACITY AND MAXIMUM FUSE SIZE. THE VALUE SHOWN IS THE BRANCH CIRCUIT SELECTION CURRENT.
 - ⑧ NO MEANS NO UNIT COMPONENTS, YES MEANS QUICK START KIT COMPONENTS. PTC MEANS POSITIVE TEMPERATURE COEFFICIENT STARTER.
 - ⑨ RATED IN ACCORDANCE WITH A.S.I. STANDARD 270 SECTION 5.3.6.



2109



(D) 2TTR2060-SUB-100.00

TAG: _____

SUBMITTAL

NOTE: All dimensions are in mm/inches.

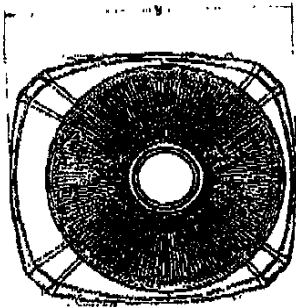


FIG. 1
 FAN ASSEMBLY
 (DIMENSIONS IN INCHES)

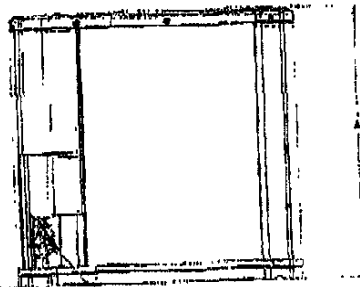


FIG. 2
 OUTDOOR UNIT CABINET
 (DIMENSIONS IN INCHES)

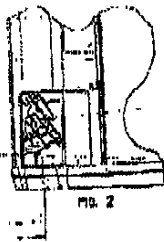


FIG. 3
 OUTDOOR COIL
 (DIMENSIONS IN INCHES)

MODELS	BASE	RC	A	B	C	D	E	F	G	H	J	K
2TTR2060B	4	1	1045 (41-1/8)	246 (97-1/4)	570 (22-7/8)	1-1/4	2/8	153 (6)	88 (3-7/8)	210 (8-3/8)	15 (3/4)	508 (20)

From Dwg. 21D15289B Rev. 4

5 Ton Split System Cooling — 1 Phase

2TTR2060B

Outdoor Unit @ 2TTR2060B1000A

General Data

SOUND RATINGS (DECIBELS) @30	78
POWER CONNS. — V/PH/Hz	208/230/1/60
MIN. BRCH. CIR. CAPACITY	87
FL. CIR.] MAX. (AMPS)	50
FACT. RTG.] MIN. (AMPS)	50
COMPRESSOR	CLIMATEUFF™ SCROLL
NO. USED - NO. SPEEDS	1 - 1
VOLTS/PH/Hz	208/230/1/60
R.L. AMPS @ - L.R. AMPS	26.8 - 14.8
FACTORY INSTALLED	
START COMPONENTS	NO
INSULATION/SOUND BLANKET	YES
COMPRESSOR HEAT	NO
OUTDOOR FAN — TYPE	PROPELLER
DIA. (IN.) - NO. USED	27.5 - 1
TYPE DRIVE - NO. SPEEDS	DIRECT - 1
CFM @ 0.5 IN. W.G.	4275
NO. MOTORS - HP	1 - 1/6
MOTOR SPEED R.P.M.	825
VOLTS/PH/Hz	208/230/1/60
R.L. AMPS	1.4
OUTDOOR COIL — TYPE	SPINE FIN™
ROWS - R.P.I.	1 - 24
FACE AREA (SQ. FT.)	27.85
TUBE SIZE (IN.)	3/8
REFRIGERANT	R-22
(O.D. UNIT) NP CHRG.	2/02-LB/OZ
FACTORY SUPPLIED	YES
LINE SIZE - IN. O.D. GAS	1-1/8
LINE SIZE - IN. O.D. LIQ.	3/8
FCBV	0.092
RESTRICTOR ORIFICE SIZE	
DIMENSIONS	H X W X D
OUTDOOR UNIT CRATED (IN.)	46.4 X 35.1 X 38.7
UNCRAATED	SEE OUTLINE DWG.
WEIGHT	307
SHIPPING (LBS.)	271
NET (LBS.)	

- NOTES
- CERTIFIED IN ACCORDANCE WITH THE UNITARY AIR-CONDITIONER EQUIPMENT CERTIFICATION PROGRAM WHICH IS BASED ON A.S.I. STANDARD 118-81.
 - RATED IN ACCORDANCE WITH ALL STANDARD E.P.A.
 - CALCULATED IN ACCORDANCE WITH NATIONAL ELECTRIC CODE, ONLY USE HARBOR OR CUTTERBANKS ON PIPES.
 - STANDARD AIR - DRY COIL - OUTDOOR
 - THIS VALUE APPROPRIATE, FOR MORE PRECISE VALUE SEE UNIT NAMEPLATE AND SERVICE INSTRUCTION.
 - MAX. LINEAR LENGTH IN FT. WITH REPRODUCTION COMPRESSOR - 80 FT. WITH SCROLL. MAX. LIFT - SUCTION 50 FT. MAX. LIFT - LIQUID 60 FT. FOR GREATER LENGTH REFER TO REFRIGERANT PIPING SOFTWARE PLUS NO. 22-301201.
 - THE VALUE SHOWN FOR COMPRESSOR R.L.A. ON THE UNIT NAMEPLATE AND ON THIS SPECIFICATION SHEET IS USED TO COMPUTE MINIMUM BRANCH CIRCUIT CAPACITY AND MAXIMUM FUSE SIZE. THE VALUE SHOWN IS THE BRANCH CIRCUIT SELECTION CURRENT.
 - NO MEANS NO START COMPONENTS. YES MEANS QUICK START KIT COMPONENTS FIT MEANS POSITIVE TEMPERATURE COEFFICIENT STARTER.
 - RATED IN ACCORDANCE WITH AIR CONDITIONER PROTECTION 55.5.



60 Hz