

04SV058

EXHIBIT 'A'  
**LOT BR,**  
**TRAILWOOD VILLAGE**  
 (formerly a portion of Tract T of Trailwood Village and Lot B of Trailwood Village)  
 LOCATED IN THE SE<sup>1</sup>/<sub>4</sub> OF THE SW<sup>1</sup>/<sub>4</sub>,  
 SECTION 10, T1N, R8E, B.H.M.,  
 PENNINGTON COUNTY, SOUTH DAKOTA

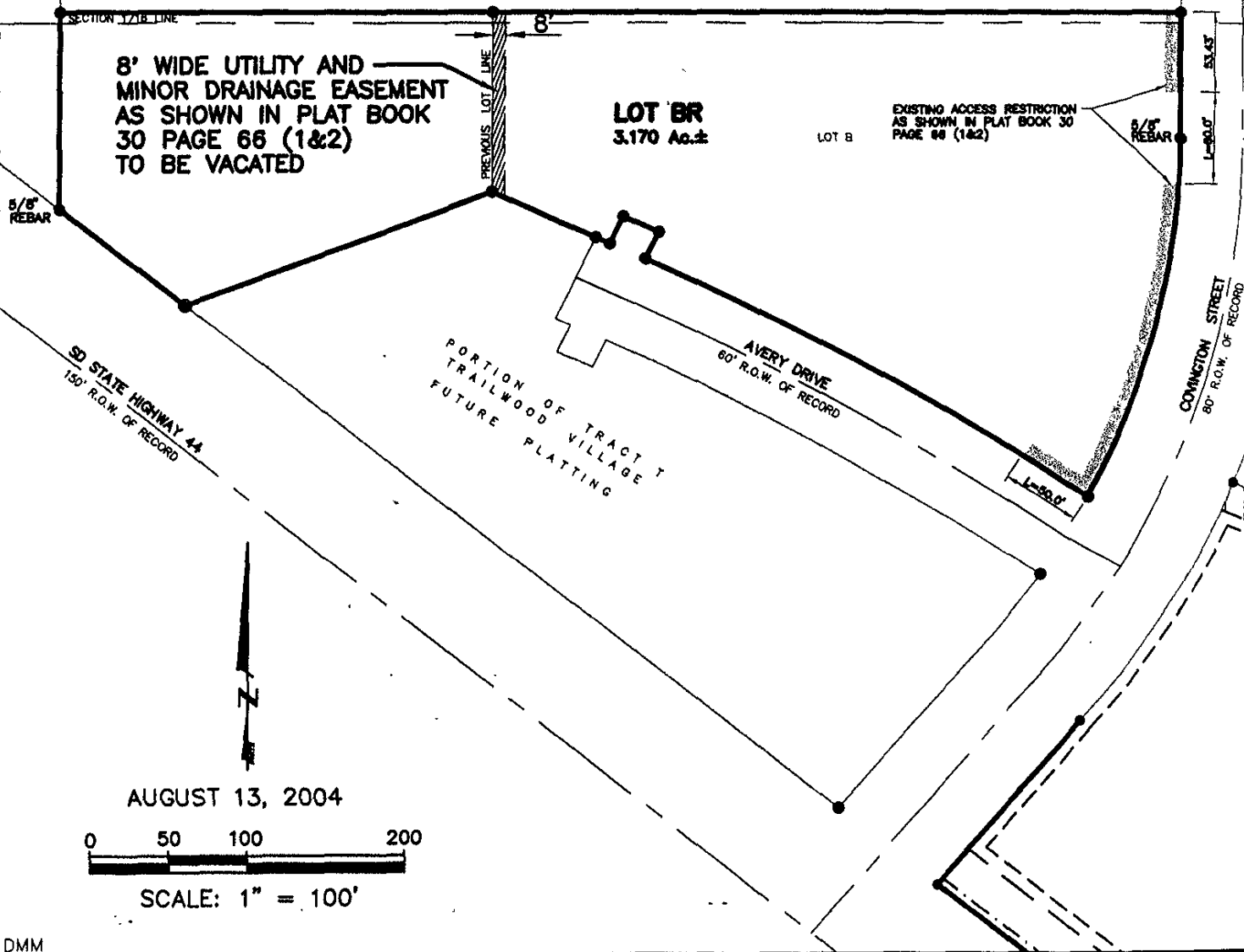
**RECEIVED**

SEP - 3 2004

Rapid City Growth  
Management Department

Utility and Minor Drainage Easements:  
8' on the interior sides of all lot  
lines, except where major drainage  
easements exist.

LOT A OF  
TRAILWOOD VILLAGE



**8' WIDE UTILITY AND  
MINOR DRAINAGE EASEMENT  
AS SHOWN IN PLAT BOOK  
30 PAGE 66 (1&2)  
TO BE VACATED**

**LOT BR**  
3.170 Ac.±

LOT B

EXISTING ACCESS RESTRICTION  
AS SHOWN IN PLAT BOOK 30  
PAGE 66 (1&2)

5/8" REBAR

5/8" REBAR

SECTION 10/16 LINE

PREVIOUS LOT LINE

8'

5/8" REBAR

L=50.0'

CONVICTION STREET  
80' R.O.W. OF RECORD

AVERY DRIVE  
60' R.O.W. OF RECORD

PORTION OF TRACT T  
TRAILWOOD VILLAGE  
FUTURE PLATTING

SD STATE HIGHWAY 44  
150' R.O.W. OF RECORD

L=50.0'

AUGUST 13, 2004



SCALE: 1" = 100'

DMM

C:\Drawings\3004\_01\EXB\_BR.dwg 8/13/2004 10:57:00 AM MST