

Asphalt Shingles

PROVIDE ATTIC ACCESS 22 X 30 IBC 1209 IRC 807

ATTIC VENTILATION IBC 1203 IRC 806



False Gable Vent

"Rotlex" Aluminum Soffit & Fascia System



"Canexel Ced'R-Vue" Prefinished Lap Siding

Brick Veneer

Raised Panel O'Head Door

RAPID CITY BUILDING INSPECTION

Reviewed by CB
Date 8/30-04

REVIEWED PLANS

NOTE: THESE PLANS ARE NOT REVIEWED FOR COMPLIANCE WITH MECHANICAL, ELECTRICAL OR PLUMBING CODES. CONTACT FIELD INSPECTORS ABOUT THESE CODES.

SEAL PENETRATIONS THRU PLATES OF FLOORS, CEILINGS, ETC. IBC SEC. 717 IRC SEC. 602.8

FIRE & DRAFT STOPS REQUIRED AT FLOORS, CEILING, CHIMNEYS, SOFFITS, ETC. IBC SEC. 717 IRC SEC. 602.8

NOTE: ALL WOOD FRAME CONSTRUCTION PER IBC & IRC

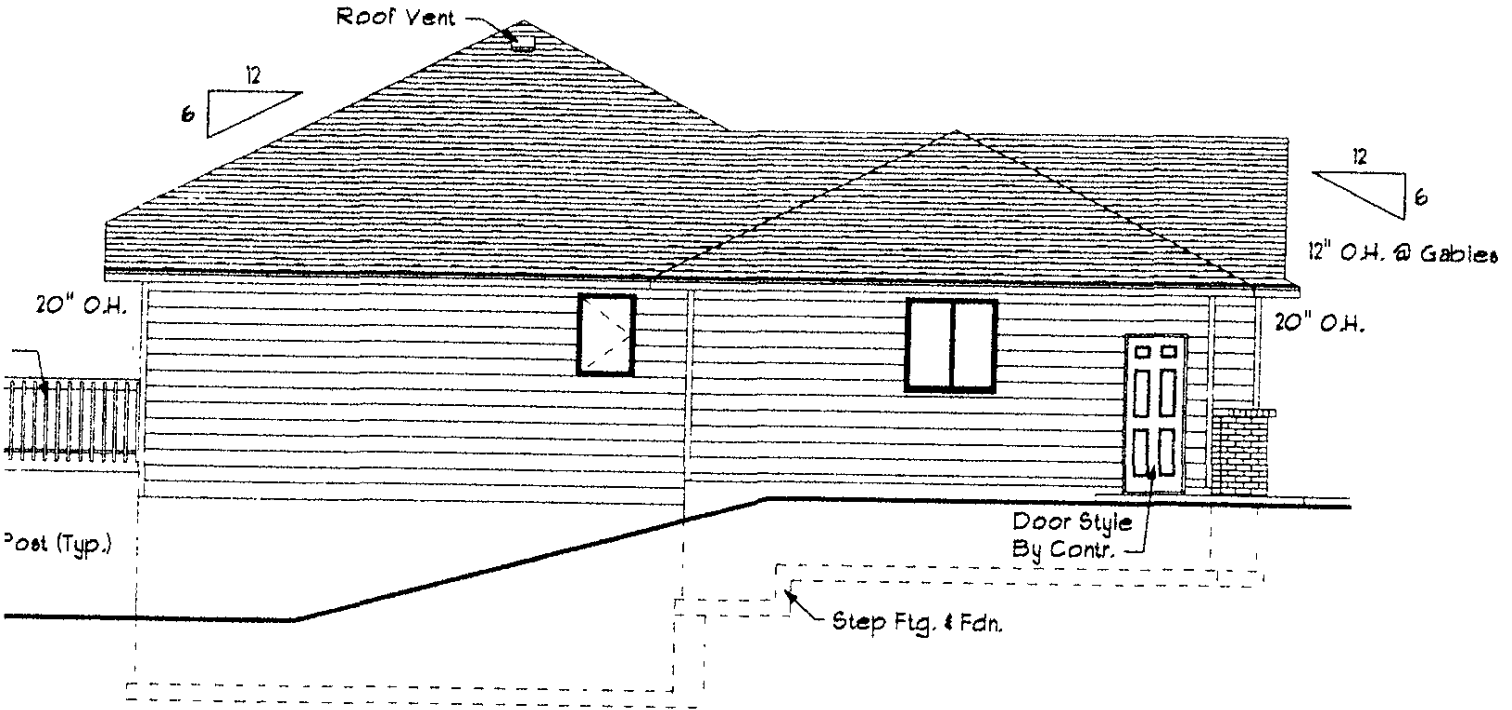
CONSTRUCTION SHALL COMPLY WITH 2003 INTERNATIONAL

RECEIVED

SEP 13 2004

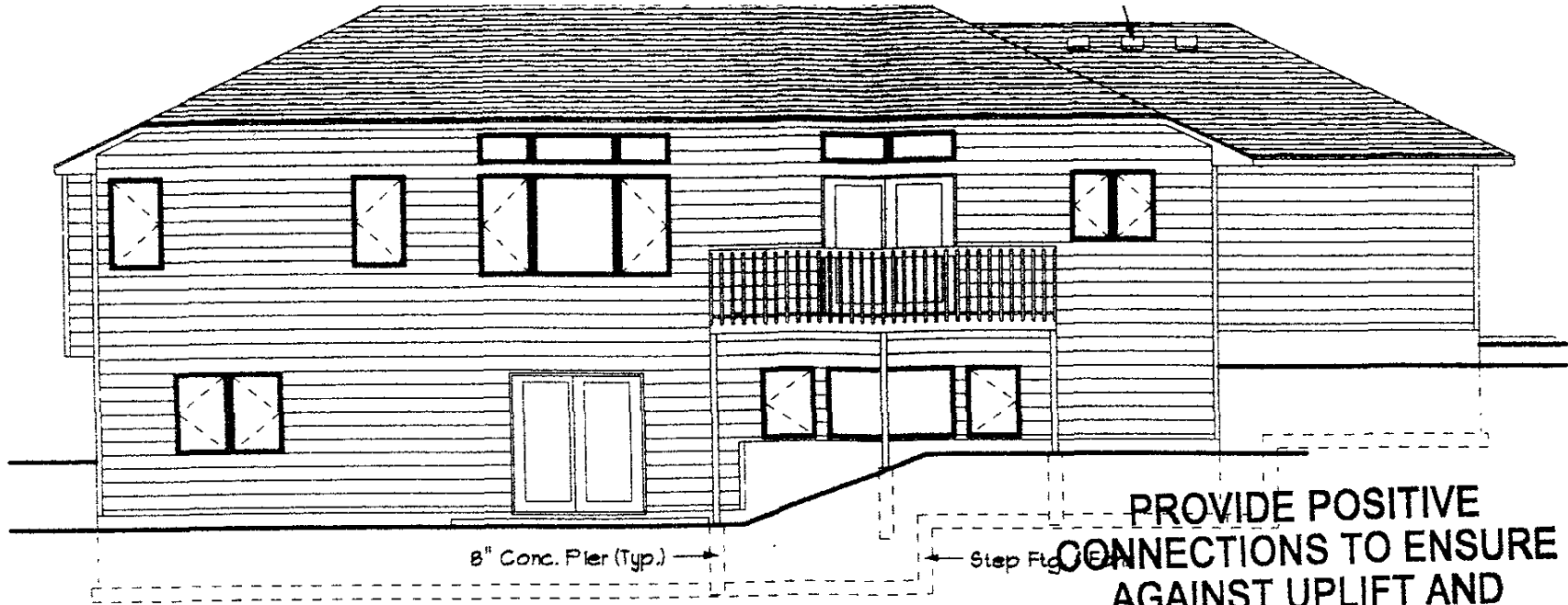
Rapid City Growth Management Department

04PD055



LEFT ELEVATION

Scale: 1/8" = 1'0"



PROVIDE POSITIVE CONNECTIONS TO ENSURE AGAINST UPLIFT AND LATERAL DISPLACEMENT

IBC 2304

RECEIVED

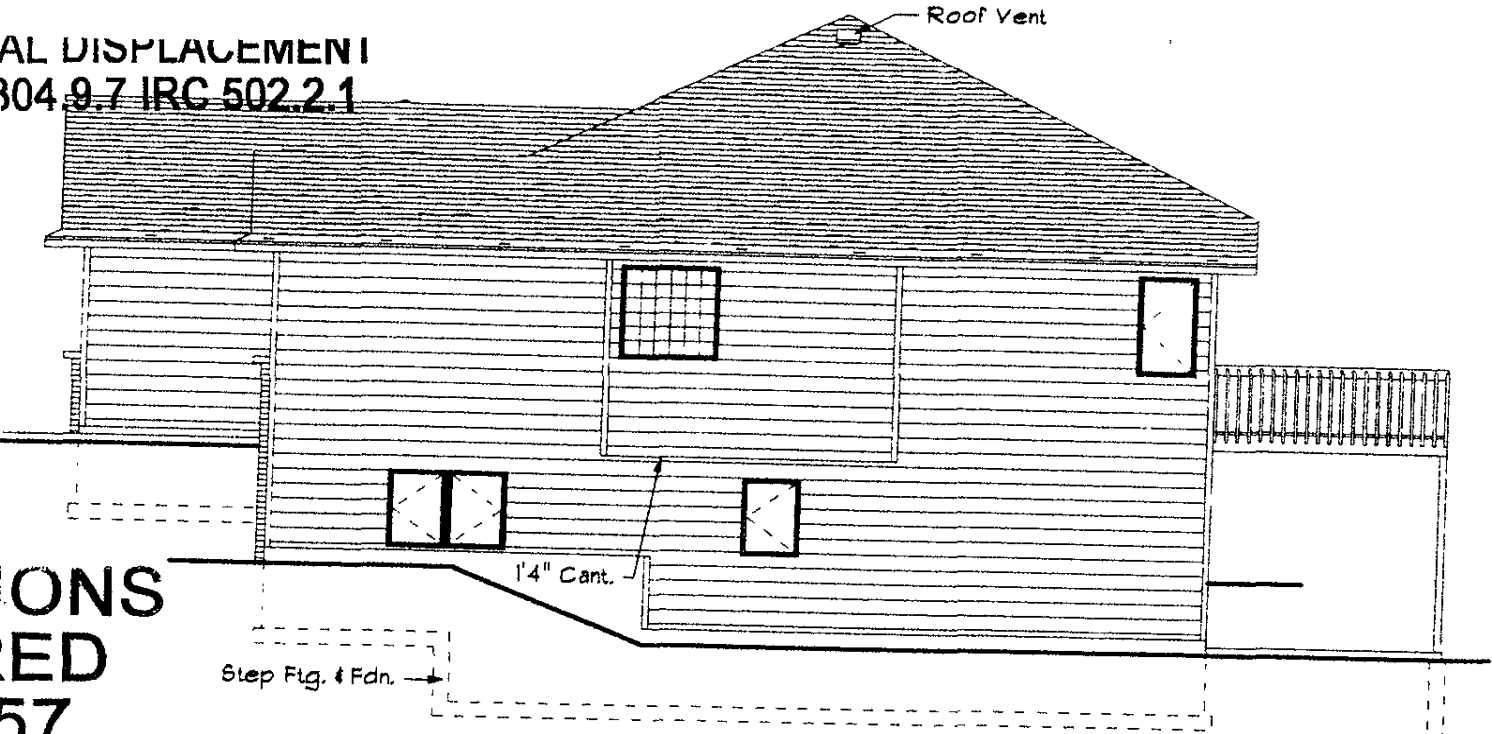
SEP 13 2004

Rapid City Growth Management Department

REAR ELEVATION

Scale: 1/8" = 1'0"

AL DISPLACEMENT
304.9.7 IRC 502.2.1



RIGHT ELEVATION

Scale: 1/8" = 1'0"



RECEIVED

SEP 13 2004

Rapid City Growth
Management Department