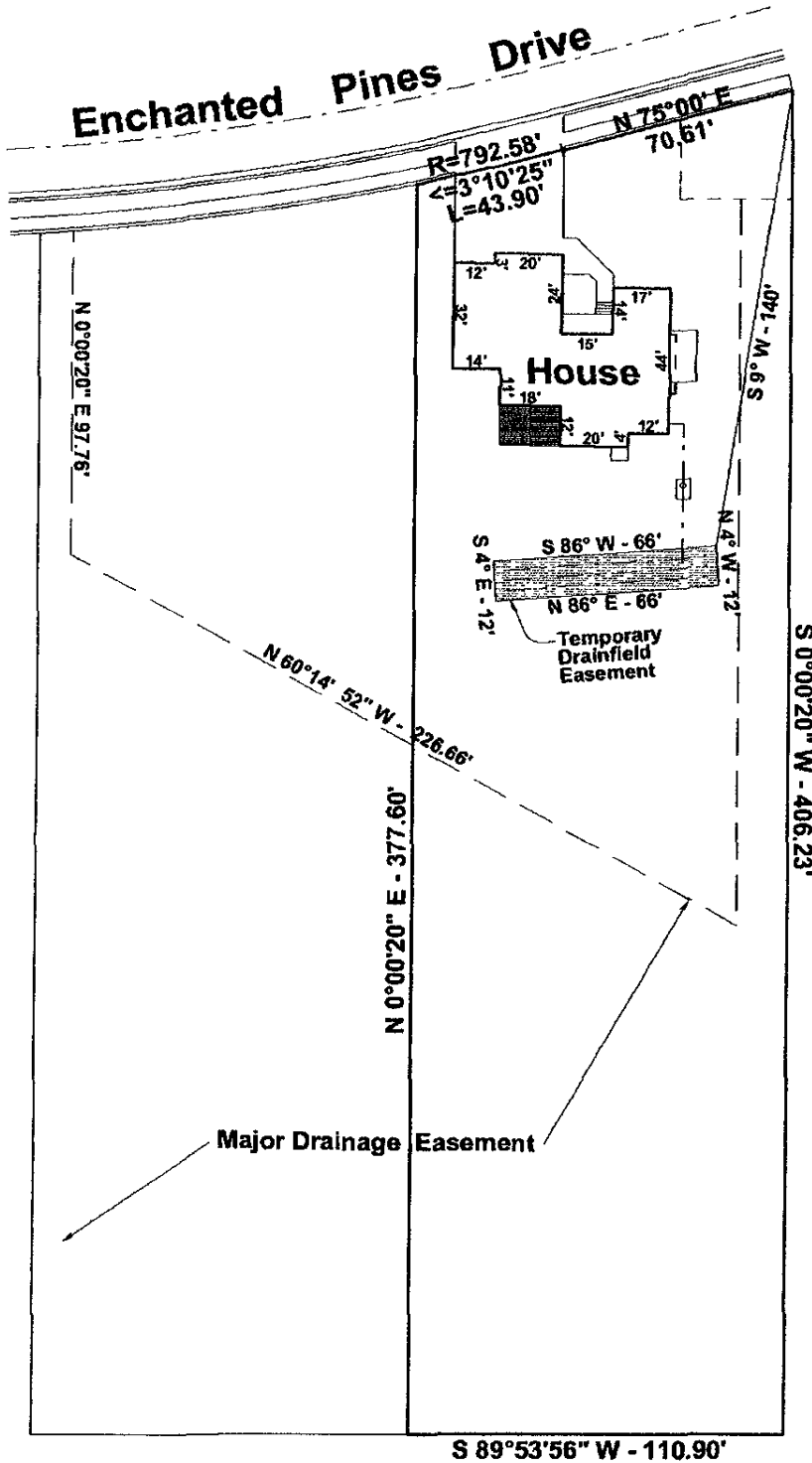


"EXHIBIT A"

Temporary Drainfield Easement
 in Lot 9 of Block 3 of the Enchanted Pines Subdivision,
 in the S½ of the NW¼ of the NE¼ of Section 23, T1N, R7E, BHM,
 Rapid City, Pennington County, South Dakota



NOTE:
 Temporary Drainfield Easement will be automatically vacated when residence connects to a central sanitary sewer system.



1"=50'

Prepared By:
 Angle Surveys
 Jerry J. Wendland
 6909 Ridgeview Dr.
 Black Hawk, SD 57718
 605-787-4503