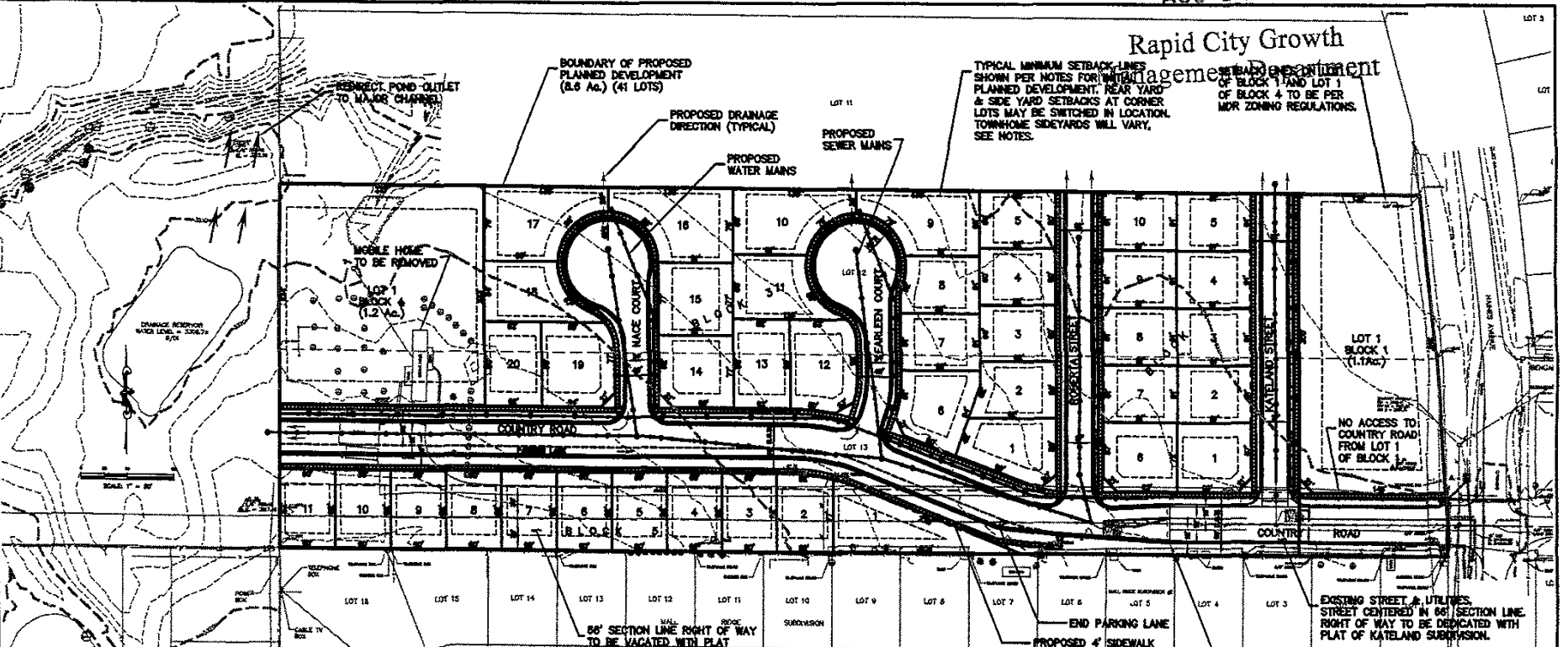


AUG 27 2004

Rapid City Growth Management Department

TYPICAL MINIMUM SETBACK LINES SHOWN PER NOTES FOR PLANNED DEVELOPMENT. REAR YARD & SIDE YARD SETBACKS AT CORNER LOTS MAY BE SWITCHED IN LOCATION. TOWNHOME SIDEYARDS WILL VARY, SEE NOTES.



NOTES FOR LAYOUT PLAN - KATELAND SUBDIVISION
1. GENERAL INFORMATION ON LAYOUT PLAN
1.1. THIS LAYOUT PLAN IS FOR THE PROPOSED DEVELOPMENT OF LOTS 1-21 OF BLOCK 1 OF PLAT 11, 11.17 AC.

NOTES FOR INITIAL PLANNING DEVELOPMENT - KATELAND SUBDIVISION
1. GENERAL INFORMATION ON INITIAL PLANNING DEVELOPMENT
1.1. GENERAL INFORMATION ON INITIAL PLANNING DEVELOPMENT
1.2. GENERAL INFORMATION ON INITIAL PLANNING DEVELOPMENT

PROPOSED KATELAND SUBDIVISION
RAPID CITY, SD

Prepared by: [Name]
Checked by: [Name]

F M G, Inc.
3700 Sturgis Road
Rapid City, SD 57702-0317
(605) 342-4105 FAX (605) 342-4222

Sheet Name: LAYOUT PLAN & INITIAL DEVELOPMENT PLAN
Sheet Number: 2
Total Sheets: 2