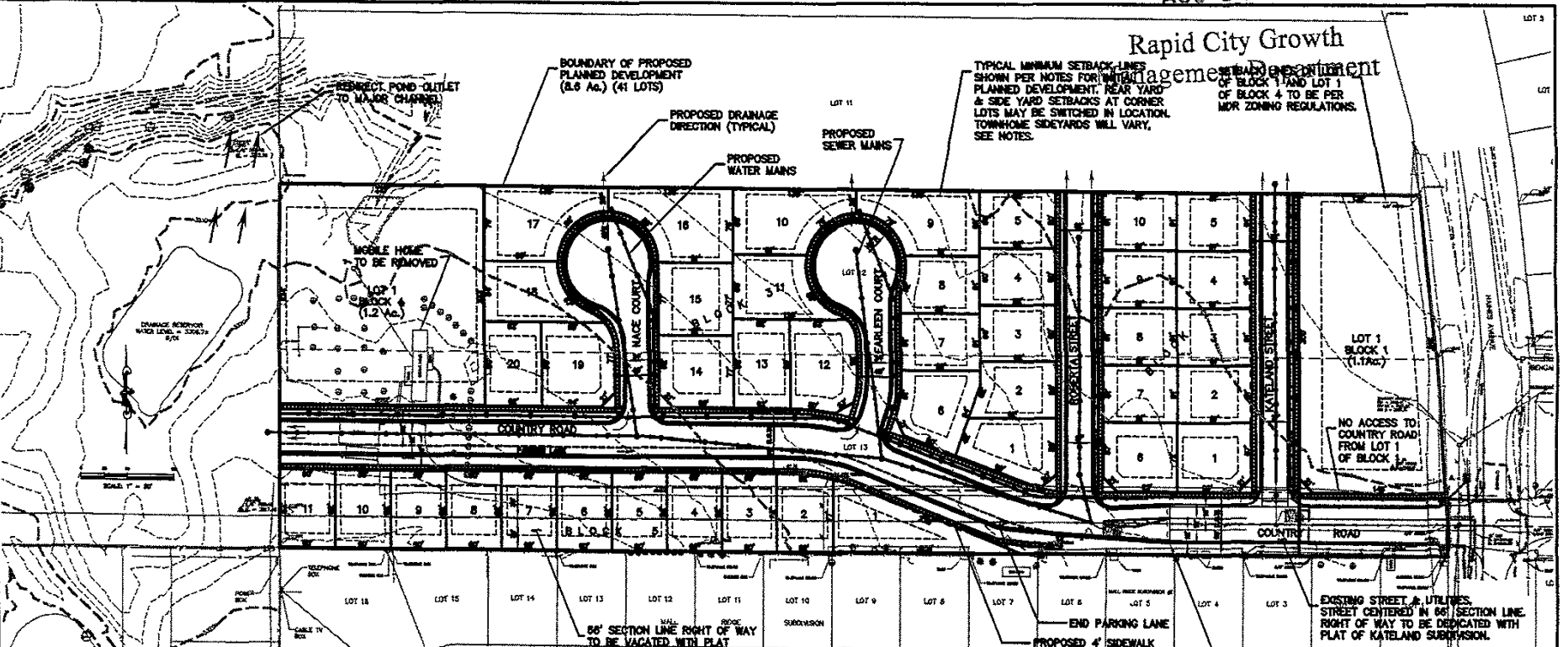


AUG 27 2004

Rapid City Growth Management Department



NOTES FOR LAYOUT PLAT - KATELAND SUBDIVISION

1. THE LAYOUT PLAT OF THIS SUBDIVISION IS IN ACCORD WITH THE STATE PLAT ACT OF 1919 AND THE RULES AND REGULATIONS OF THE SOUTH DAKOTA REGISTER OF DEEDS.
2. THE LOTS IN THIS SUBDIVISION ARE TO BE USED FOR RESIDENTIAL PURPOSES.
3. THE LOTS IN THIS SUBDIVISION ARE TO BE USED FOR RESIDENTIAL PURPOSES.
4. THE LOTS IN THIS SUBDIVISION ARE TO BE USED FOR RESIDENTIAL PURPOSES.
5. THE LOTS IN THIS SUBDIVISION ARE TO BE USED FOR RESIDENTIAL PURPOSES.
6. THE LOTS IN THIS SUBDIVISION ARE TO BE USED FOR RESIDENTIAL PURPOSES.
7. THE LOTS IN THIS SUBDIVISION ARE TO BE USED FOR RESIDENTIAL PURPOSES.
8. THE LOTS IN THIS SUBDIVISION ARE TO BE USED FOR RESIDENTIAL PURPOSES.
9. THE LOTS IN THIS SUBDIVISION ARE TO BE USED FOR RESIDENTIAL PURPOSES.
10. THE LOTS IN THIS SUBDIVISION ARE TO BE USED FOR RESIDENTIAL PURPOSES.
11. THE LOTS IN THIS SUBDIVISION ARE TO BE USED FOR RESIDENTIAL PURPOSES.
12. THE LOTS IN THIS SUBDIVISION ARE TO BE USED FOR RESIDENTIAL PURPOSES.
13. THE LOTS IN THIS SUBDIVISION ARE TO BE USED FOR RESIDENTIAL PURPOSES.
14. THE LOTS IN THIS SUBDIVISION ARE TO BE USED FOR RESIDENTIAL PURPOSES.
15. THE LOTS IN THIS SUBDIVISION ARE TO BE USED FOR RESIDENTIAL PURPOSES.
16. THE LOTS IN THIS SUBDIVISION ARE TO BE USED FOR RESIDENTIAL PURPOSES.
17. THE LOTS IN THIS SUBDIVISION ARE TO BE USED FOR RESIDENTIAL PURPOSES.
18. THE LOTS IN THIS SUBDIVISION ARE TO BE USED FOR RESIDENTIAL PURPOSES.
19. THE LOTS IN THIS SUBDIVISION ARE TO BE USED FOR RESIDENTIAL PURPOSES.
20. THE LOTS IN THIS SUBDIVISION ARE TO BE USED FOR RESIDENTIAL PURPOSES.
21. THE LOTS IN THIS SUBDIVISION ARE TO BE USED FOR RESIDENTIAL PURPOSES.

NOTES FOR INITIAL PLANNED DEVELOPMENT - KATELAND SUBDIVISION

1. THE SUBDIVISION OF LAND IS SUBJECT TO THE STATE PLAT ACT OF 1919 AND THE RULES AND REGULATIONS OF THE SOUTH DAKOTA REGISTER OF DEEDS.
2. THE LOTS IN THIS SUBDIVISION ARE TO BE USED FOR RESIDENTIAL PURPOSES.
3. THE LOTS IN THIS SUBDIVISION ARE TO BE USED FOR RESIDENTIAL PURPOSES.
4. THE LOTS IN THIS SUBDIVISION ARE TO BE USED FOR RESIDENTIAL PURPOSES.
5. THE LOTS IN THIS SUBDIVISION ARE TO BE USED FOR RESIDENTIAL PURPOSES.
6. THE LOTS IN THIS SUBDIVISION ARE TO BE USED FOR RESIDENTIAL PURPOSES.
7. THE LOTS IN THIS SUBDIVISION ARE TO BE USED FOR RESIDENTIAL PURPOSES.
8. THE LOTS IN THIS SUBDIVISION ARE TO BE USED FOR RESIDENTIAL PURPOSES.
9. THE LOTS IN THIS SUBDIVISION ARE TO BE USED FOR RESIDENTIAL PURPOSES.
10. THE LOTS IN THIS SUBDIVISION ARE TO BE USED FOR RESIDENTIAL PURPOSES.
11. THE LOTS IN THIS SUBDIVISION ARE TO BE USED FOR RESIDENTIAL PURPOSES.
12. THE LOTS IN THIS SUBDIVISION ARE TO BE USED FOR RESIDENTIAL PURPOSES.
13. THE LOTS IN THIS SUBDIVISION ARE TO BE USED FOR RESIDENTIAL PURPOSES.
14. THE LOTS IN THIS SUBDIVISION ARE TO BE USED FOR RESIDENTIAL PURPOSES.
15. THE LOTS IN THIS SUBDIVISION ARE TO BE USED FOR RESIDENTIAL PURPOSES.
16. THE LOTS IN THIS SUBDIVISION ARE TO BE USED FOR RESIDENTIAL PURPOSES.
17. THE LOTS IN THIS SUBDIVISION ARE TO BE USED FOR RESIDENTIAL PURPOSES.
18. THE LOTS IN THIS SUBDIVISION ARE TO BE USED FOR RESIDENTIAL PURPOSES.
19. THE LOTS IN THIS SUBDIVISION ARE TO BE USED FOR RESIDENTIAL PURPOSES.
20. THE LOTS IN THIS SUBDIVISION ARE TO BE USED FOR RESIDENTIAL PURPOSES.
21. THE LOTS IN THIS SUBDIVISION ARE TO BE USED FOR RESIDENTIAL PURPOSES.

PROPOSED KATELAND SUBDIVISION
RAPID CITY, SD

NO. 00003142 (0)

Revision / Date

AUGUST 2004

F M G, Inc.

3700 Sturgis Road
Rapid City, SD 57702-0317
(605) 342-4105 FAX (605) 342-4222

Sheet Name: **LAYOUT PLAT & INITIAL DEVELOPMENT PLAN**

Sheet Number: **2**

Total Sheets: **2**