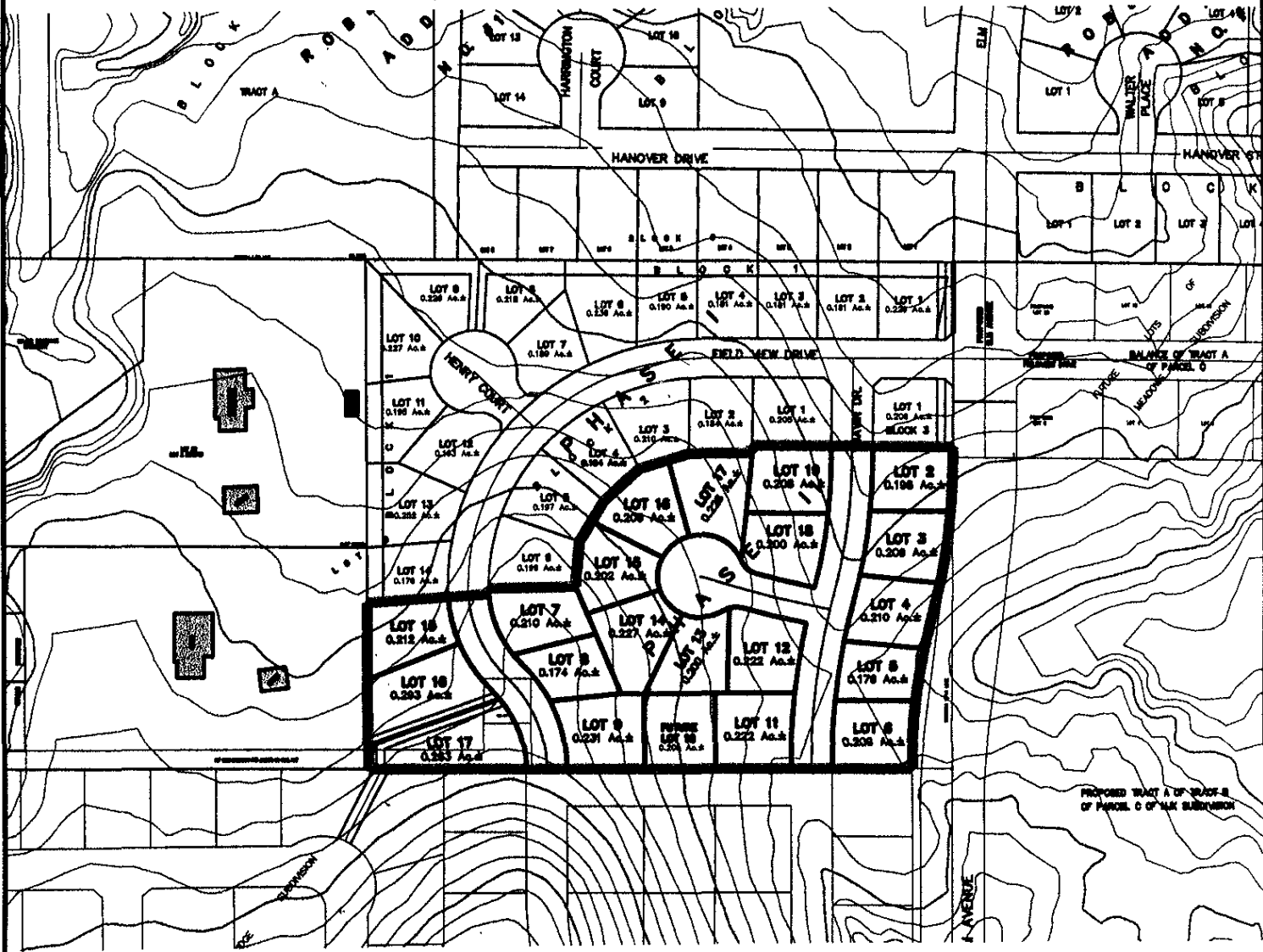


LAYOUT PLAN
**LOTS 15-17 OF BLOCK 1, LOTS 7-19 OF BLOCK 2, AND
 LOTS 2-6 OF BLOCK 3,**
KENNINGTON HEIGHTS SUBDIVISION
 (formerly a portion Lot B of the N $\frac{1}{2}$ of Government Lot 4)
 LOCATED IN THE SW $\frac{1}{4}$ OF THE SW $\frac{1}{4}$,
 SECTION 18, T1N, R8E, BHM,
 RAPID CITY, PENNINGTON COUNTY, SOUTH DAKOTA



RECEIVED

AUG 27 2004

Rapid City Growth
 Management Department

AUGUST 27, 2004



SCALE: 1" = 200'

C:\Drawings\1562_02\phase1.dwg 8/27/2004 8:37:41 AM MST