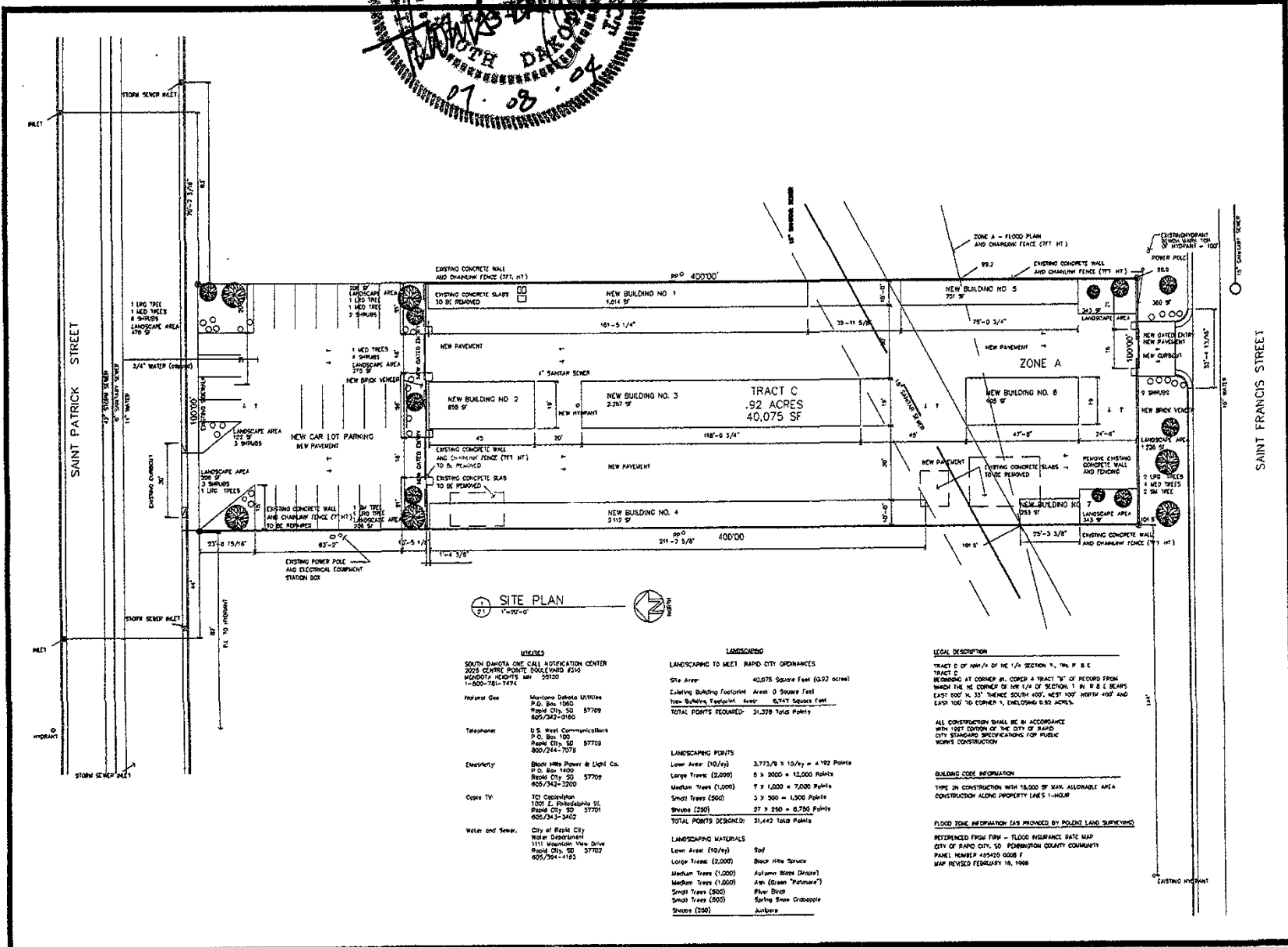


Copyright 2004 Ownership of Documents
 This document and the ideas and designs incorporated herein, as an instrument of professional service, is the property of baffuto architettura and is not to be used in whole or in part for this or any other project without the written authorization of baffuto architettura.



Management Department
 Rapid City Growth
 AUG 12 2004
RECEIVED



UTILITIES

Utility	Company	Contact Info
Natural Gas	Montana Dakota Utilities	P.O. Box 1980, Rapid City, SD 57709, 605/342-0160
Telephone	D.S. West Communications	P.O. Box 100, Rapid City, SD 57709, 605/344-7078
Electricity	Black Hills Power & Light Co.	P.O. Box 1400, Rapid City, SD 57709, 605/342-1200
Cable TV	TCO Cablevision	1300 S. Philadelphia St., Rapid City, SD 57701, 605/343-3402
Water and Sewer	City of Rapid City Water Department	1111 Washington View Drive, Rapid City, SD 57702, 605/399-4183

LANDSCAPING

LANDSCAPING TO MEET RAPID CITY ORDINANCES

Site Area: 40,075 Square Feet (6.22 acres)
 Existing Building Footprint Area: 0 Square Feet
 New Building Footprint Area: 6,321 Square Feet
TOTAL POINTS REQUIRED: 31,329 Total Points

Category	Quantity	Points
Low Area (10/10)	3,773/8 x 10/10	4,192 Points
Large Trees (2,000)	0 x 2000	12,000 Points
Medium Trees (1,000)	1 x 1,000	7,000 Points
Small Trees (500)	3 x 500	1,500 Points
Shrubs (250)	27 x 250	6,750 Points
TOTAL POINTS DEMONSTRATED:		31,442 Total Points

LANDSCAPING MATERIALS

Material	Quantity
Low Area (10/10)	Soil
Large Trees (2,000)	Black Hills Spruce
Medium Trees (1,000)	Autumn Blaze (Shade)
Medium Trees (1,000)	Am. Green 'Potomac'
Small Trees (500)	Fluo Blue
Small Trees (500)	Spring Snow Globe
Shrubs (250)	Junipers

LEGAL DESCRIPTION

TRACT C OF NW 1/4 OF THE 1/4 SECTION 7, T4N, R18E, B1E
 BEING AT CORNER PL. CORP. 4 TRACT 73 OF RECORD FROM
 WHICH THE NE CORNER OF THE 1/4 OF SECTION 1, T4N, R18E, B1E BEARS
 EAST 80° 0' 33" THENCE SOUTH 400', WEST 100' NORTH 400' AND
 EAST 100' TO CORNER 1, ENCLASING 0.32 ACRES.

ALL CONSTRUCTION SHALL BE IN ACCORDANCE
 WITH THE ORDINANCES OF THE CITY OF RAPID
 CITY, S.D. CONCERNING SPECIFICATIONS FOR PUBLIC
 WORKS CONSTRUCTION.

BUILDING CODE INFORMATION

WORK IN CONSTRUCTION WITH 18,000 SF MAX. ALLOWABLE AREA
 CONSTRUCTION ALONG PROPERTY LINES 1-HOUR

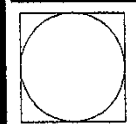
FLOOD ZONE INFORMATION (AS PROVIDED BY POLICE LAND SURVEYING)

RETRIEVED FROM FIRM - FLOOD INSURANCE RATE MAP
 CITY OF RAPID CITY, SD PONDATION COUNTY COUNCIL
 PANEL NUMBER 455425 0000 F
 MAP REVISED FEBRUARY 18, 1998

2.1
 Sheet Number
04-006
 Project Number

**REPUBLIC HOLDINGS
 CAR LOT & STORAGE
 FACILITY**

RAPID CITY, SOUTH DAKOTA 57504



baffuto
 architettura

an a/s architecture
 201 N. 17th St., Suite 100
 Rapid City, SD 57504
 Phone: 605/342-1200
 Fax: 605/342-1201
 Website: www.baffuto.com