

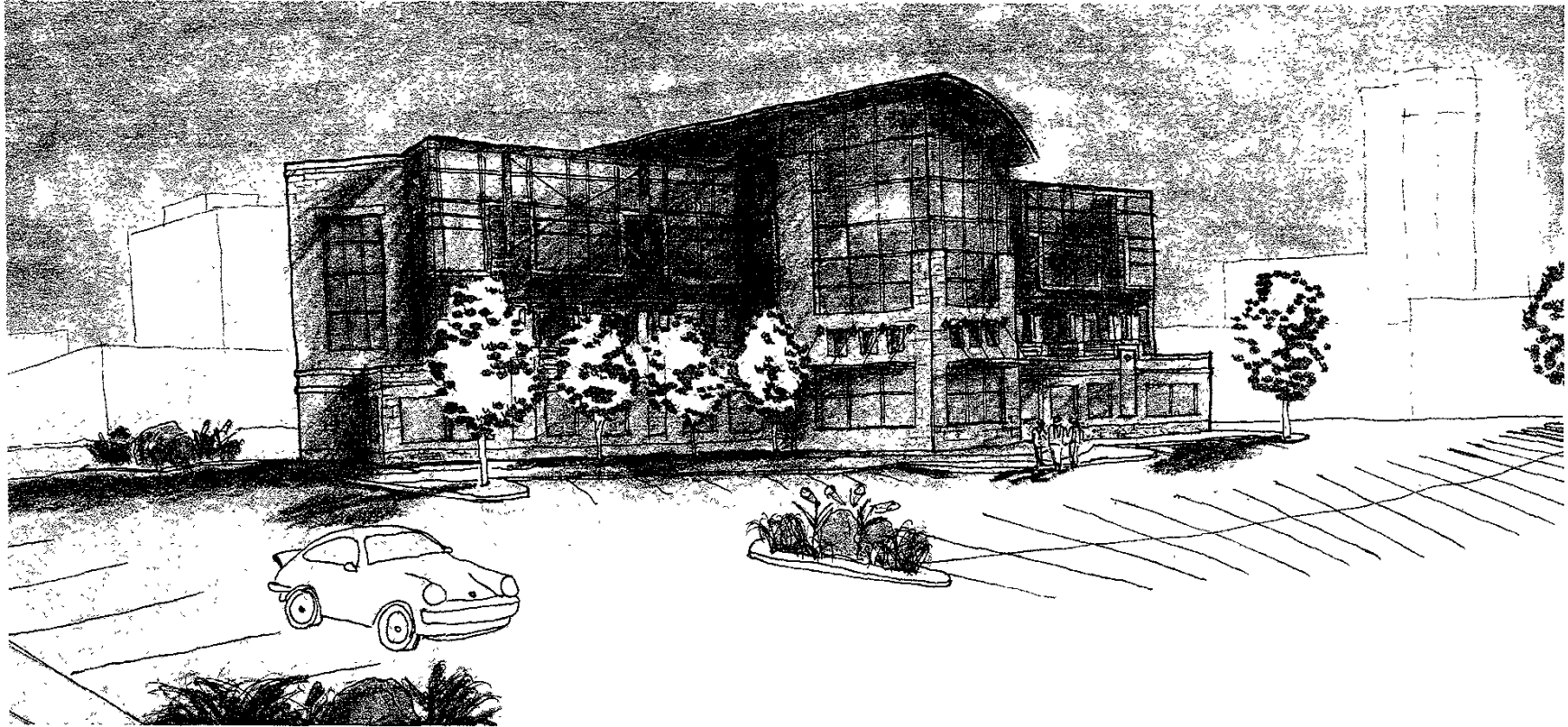
1 VIEW FROM OMAHA ST./WEST BLYD.
A3

PRELIMINARY
NOT FOR
CONSTRUCTION

ARC
ARCHITECTURAL
RENDERING
CORPORATION
1033 U.S. HIGHWAY 101
RAPID CITY, SD 57701
TEL: 605-341-3300 FAX: 605-341-3021

PROJECT: First Western Gateway
Rapid City, South Dakota

DATE: 2/2/04
DRAWN BY: JET
CHECKED BY: JET
SHEET TITLE:



2 VIEW FROM 11TH ST./OMAHA ST.
A3

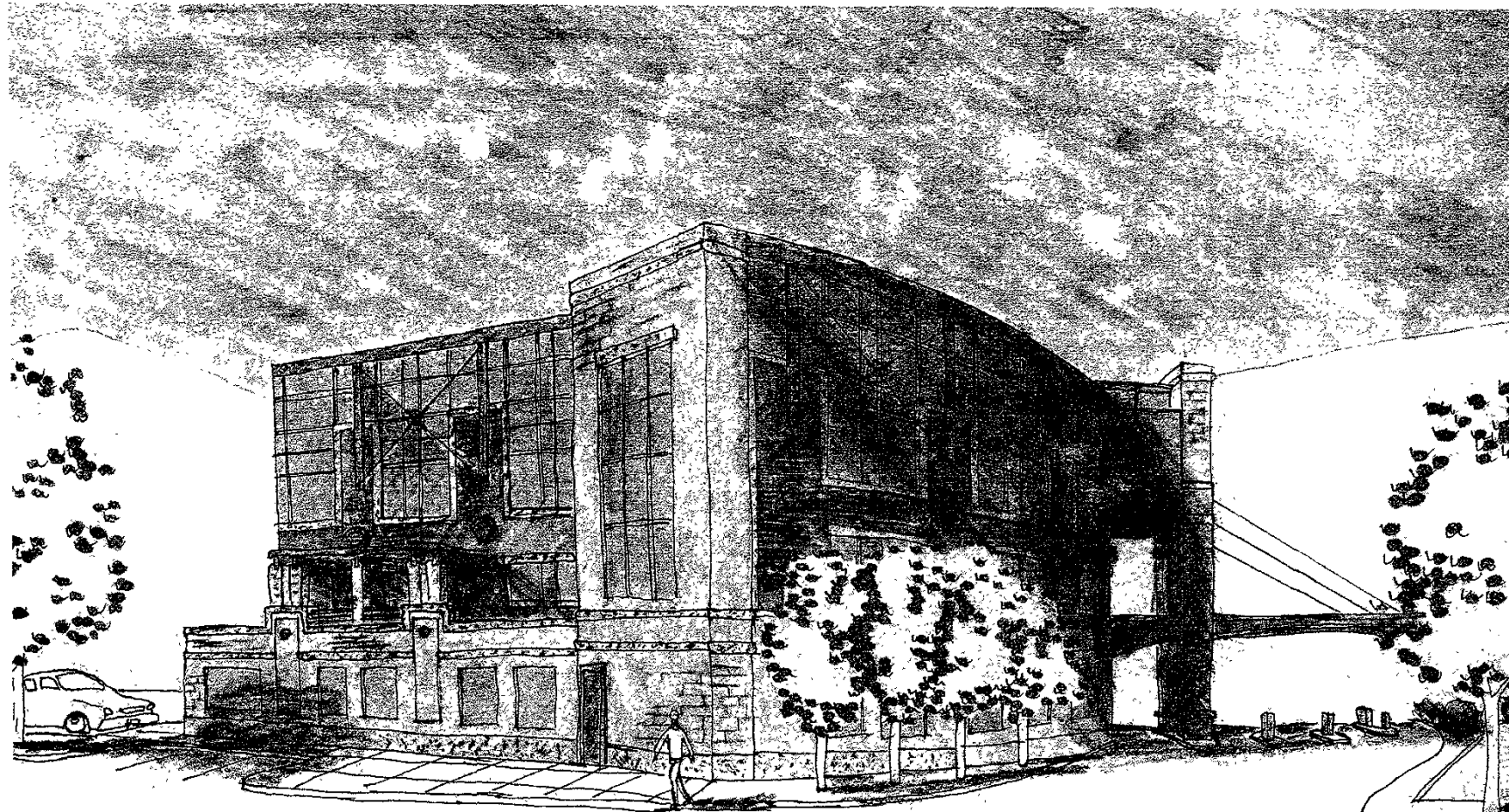
PRELIMINARY
NOT FOR
CONSTRUCTION

ARC
ARCHITECTURE INC.
1534 Clark Street, Suite 200
Rapid City, South Dakota 57702
www.ARC-CTEK.com
tel. 605.341.0000 fax. 605.341.1831

First Western Gateway
Rapid City, South Dakota

DATE 2/0/04
DRAWN BY RT

SHEET TITLE



3 VIEW FROM WEST BLYD./RAPID ST.
A3 1/8"=1'-0"

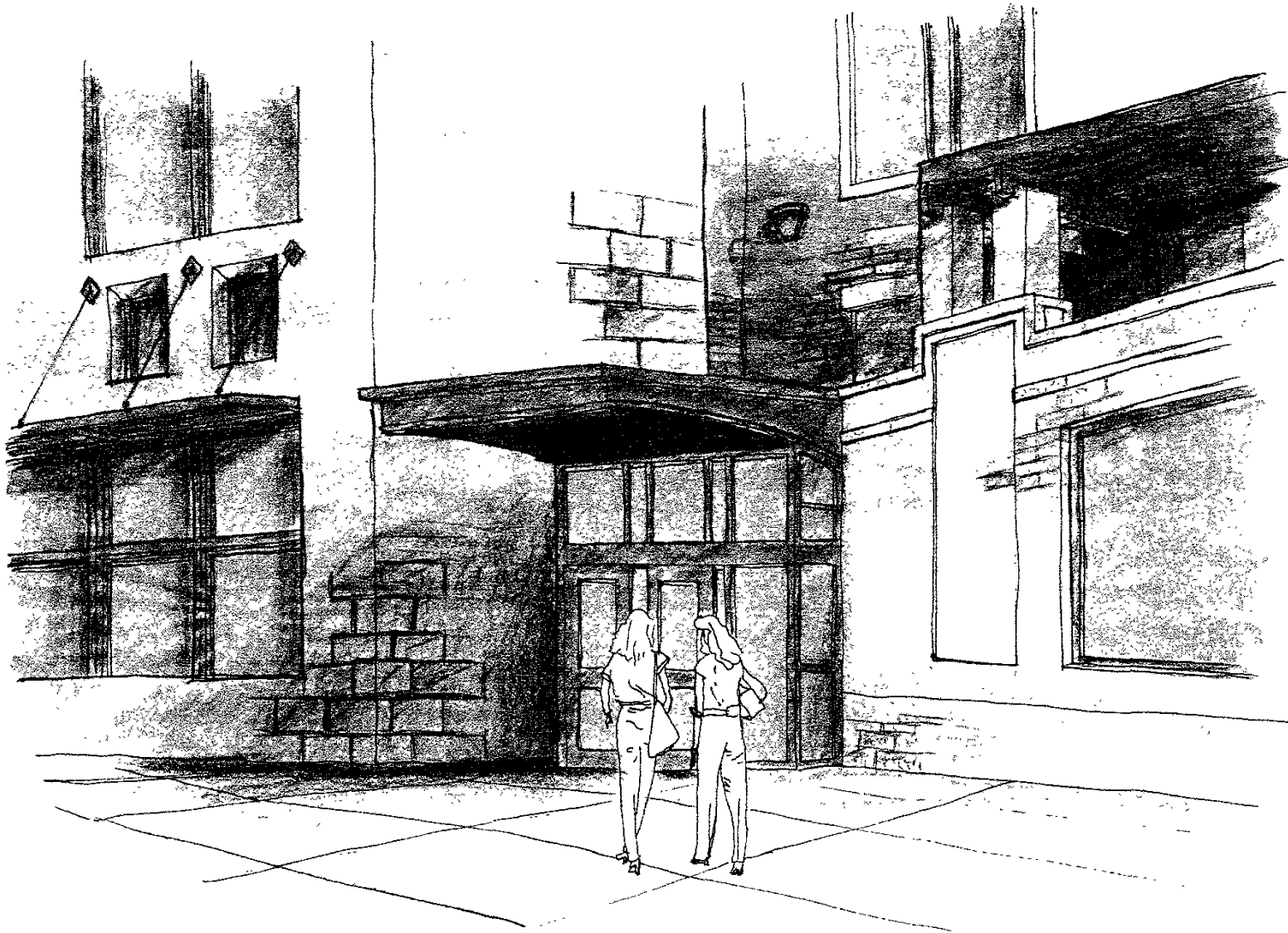
PRELIMINARY
NOT FOR
CONSTRUCTION

ARC
ARCHITECTURE
1233 Clark Street, Suite 103
Rapid City, South Dakota 57702
www.arc-rt.com
tel: 605-341-2000 fax: 605-341-4881
cell: 605-341-2005

PROJECT NO. 2001-0-38
DATE 2/9/04
DRAWN BY [unintelligible] RT

First Western Gateway
Rapid City, South Dakota





4 11TH STREET ENTRANCE
A3

PRELIMINARY
NOT FOR
CONSTRUCTION

ARC Architecture
1824 Clark Street, Suite 101
Rapid City, South Dakota 57702
www.ARC-PA.com
tel: 605-341-7000 fax: 605-341-9551

COMD NO. 2003-038
DATE 2/9/04
DRAWN BY
PT

First Western Gateway
Rapid City, South Dakota

