

1 WEST ELEVATION
A3.2 NTS



2 NORTH ELEVATION
A3.2 NTS

SIGNAGE SUMMARY

SITE SIGNAGE
 TOTAL STREET FRONTAGE = 1,351 LF.
 SITE SIGNAGE ALLOWANCE = 2,714 S.F.

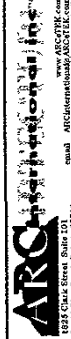
SIGNAGE SHOWN
 BILLBOARD-2 SIDES = 1,536 S.F.
 PYLON SIGN-2 SIDES = 184 S.F.
 TOTAL SHOWN = 2,320 S.F.

BUILDING SIGNAGE

TOTAL STREET FRONTAGE = 1,351 LF.
 BUILDING SIGNAGE = 2,714 S.F.

SIGNAGE SHOWN
 EAST = 673 S.F.
 NORTH = 54 S.F.
 SOUTH = 182 S.F.
 WEST = 336 S.F.
 TOTAL SHOWN = 1,245 S.F.

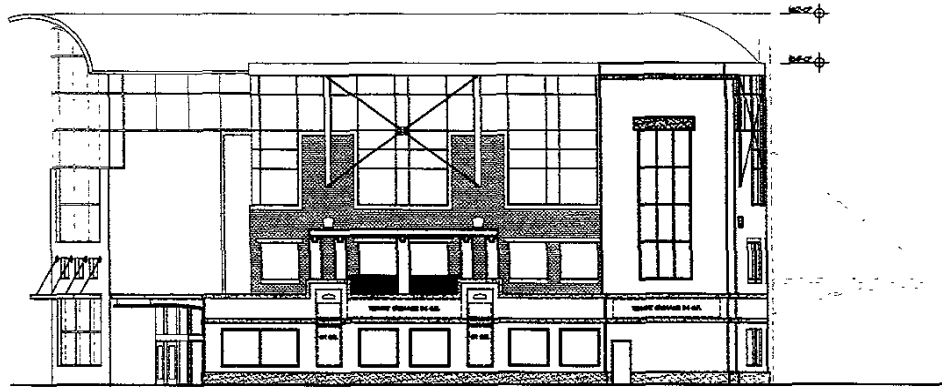
PRELIMINARY
NOT FOR
CONSTRUCTION



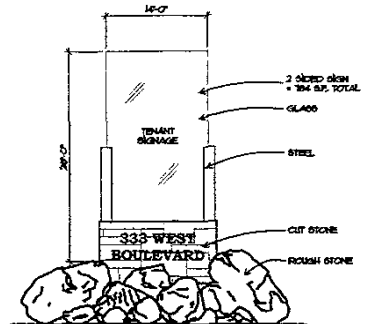
First Western Gateway
Rapid City, South Dakota

A3.2

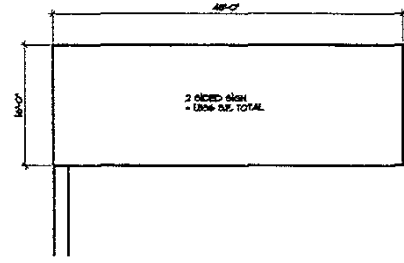
DATE: 8/30/04
 DRAWN BY: [blank]
 CHECKED BY: [blank]
 SHEET TITLE: Sign Plan



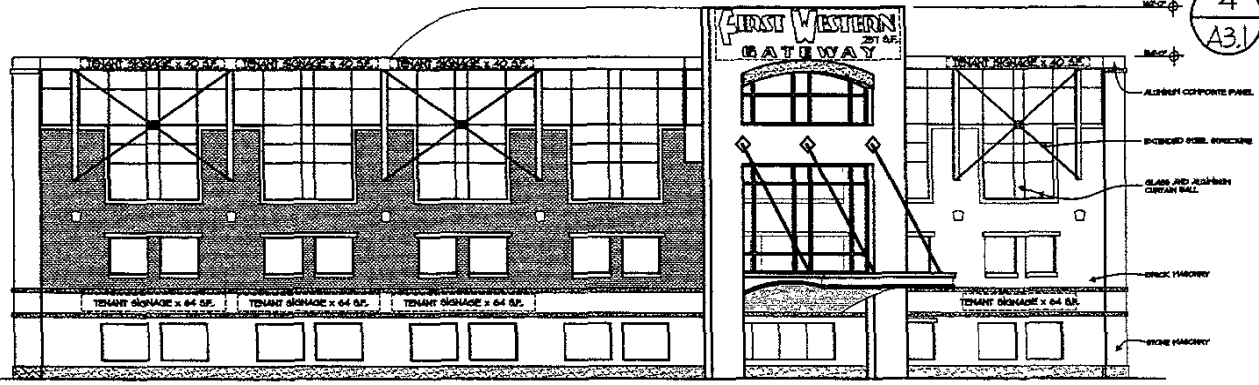
1 SOUTH ELEVATION
A3.1 NTS



3 PYLON SIGN
A3.1 NTS



4 BILLBOARD SIGN
A3.1 NTS



2 EAST ELEVATION
A3.1 NTS

SIGNAGE SUMMARY	
SITE SIGNAGE	
TOTAL STREET FRONTAGE	= 1,351 L.F.
SITE SIGNAGE ALLOWANCE	= 2,714 S.F.
SIGNAGE SHOWN	
BILLBOARD-2 SIDES	= 1,536 S.F.
PYLON SIGN-2 SIDES	= 184 S.F.
TOTAL SHOWN	= 2,320 S.F.
BUILDING SIGNAGE	
TOTAL STREET FRONTAGE	= 1,351 L.F.
BUILDING SIGNAGE	= 2,714 S.F.
SIGNAGE SHOWN	
EAST	= 673 S.F.
NORTH	= 54 S.F.
SOUTH	= 182 S.F.
WEST	= 336 S.F.
TOTAL SHOWN	= 1,245 S.F.

PRELIMINARY
NOT FOR
CONSTRUCTION

ARC
ARCHITECTURAL
RENDERING
CORPORATION
www.ARCOTEX.com
1625 QUINN DRIVE, SUITE 100
RAPID CITY, SOUTH DAKOTA 57709
PH: 605.342.5222 FAX: 605.342.5211

PROJECT NO. 2014-038
DATE 8/29/14
DRAWN BY
CHECKED BY

First Western Gateway
Rapid City, South Dakota
SWEET TITLE ELEVATIONS

A3.1