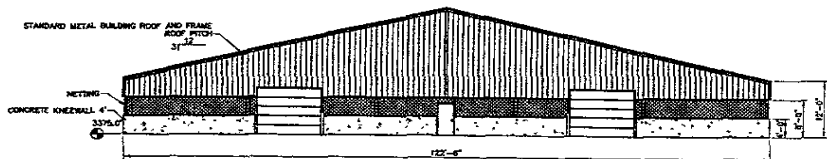
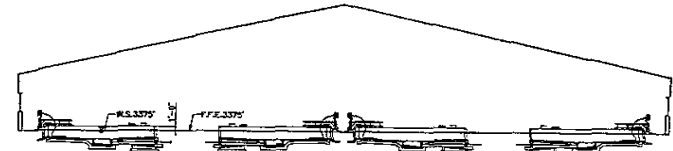


0' 6" 12" 24" REARING BUILDING SIDE ELEVATION
SCALE: 3/32" = 1'-0" (A) 42323



0' 6" 12" 24" REARING BUILDING END ELEVATION
SCALE: 3/32" = 1'-0" (B) 42323



0' 6" 12" 24" REARING BUILDING SECTION A-A
SCALE: 3/32" = 1'-0" (C) 42323

NOTE: DRAWINGS WERE GENERATED FOR GRAPHICAL PRESENTATION PURPOSES ONLY. DRAWINGS SHOULD NOT BE USED FOR SCALED ENGINEERING DESIGN.

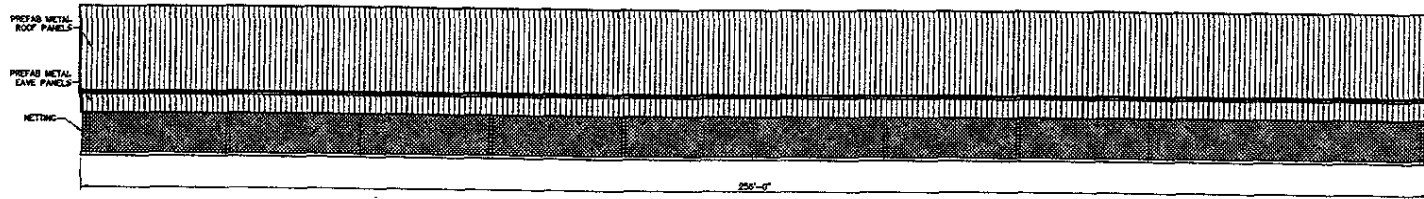
FISHPRO / COCHRAN & WILKEN INC.
 Consulting Engineers and Scientists
 2301 South Sixth Street, Suite
 Springfield, IL 62705-5165
 (217) 565-6669



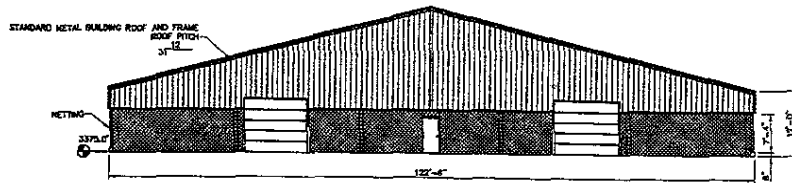
SOUTH DAKOTA FISH AND WILDLIFE
 DEPARTMENT OF GAME, FISH & PARKS
 523 EAST CAPITOL AVENUE
 PIERRE, SD 57501-3182

DRAWING TITLE: REARING BUILDING ELEVATIONS AND SECTIONS OPTION 1
 PROJECT: HATCHERY RENOVATION
 CLEGHORN SPRINGS FISH HATCHERY
 RAPID CITY, SOUTH DAKOTA

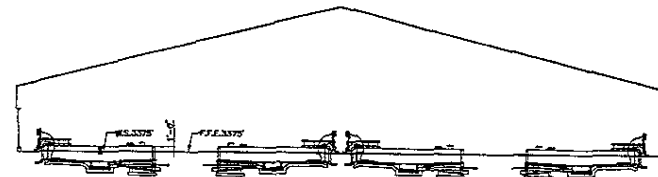
FP #	5/17/04
SHEET	A-2.2
OF - SHEETS	



0 5 10 20 REARING BUILDING SIDE ELEVATION A
SCALE: 3/32" = 1'-0"



0 5 10 20 REARING BUILDING END ELEVATION B
SCALE: 3/32" = 1'-0"



0 5 10 20 REARING BUILDING SECTION A-A C
SCALE: 3/32" = 1'-0"

NOTE: DRAWINGS WERE GENERATED FOR GRAPHICAL PRESENTATION PURPOSES ONLY. DRAWINGS SHOULD NOT BE USED FOR SCALED ENGINEERING DESIGN.

FISHPRO / COCHRAN & WILKEN INC.
Consulting Engineers and Scientists
5201 South Birch Street Road
Springfield, IL 62770-1245
(217) 595-8233



SOUTH DAKOTA FISH AND WILDLIFE
DEPARTMENT OF GAME, FISH & PARKS
523 EAST CAPITOL AVENUE
PIERRE, SD 57501-3182

DRAWING TITLE: REARING BUILDING ELEVATIONS AND SECTIONS OPTION 2
PROJECT: HATCHERY RENOVATION
CLEGHORN SPRINGS FISH HATCHERY
RAPID CITY, SOUTH DAKOTA

FP # 6/17/04
SHEET A-23
OF - SHEETS