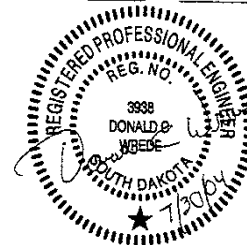


**PROPOSED LOTS 1 AND 2 OF BLOCK 4 OF FEIGELS  
SUBDIVISION IN SECTION 31, T2N, R8E, B.H.M.**

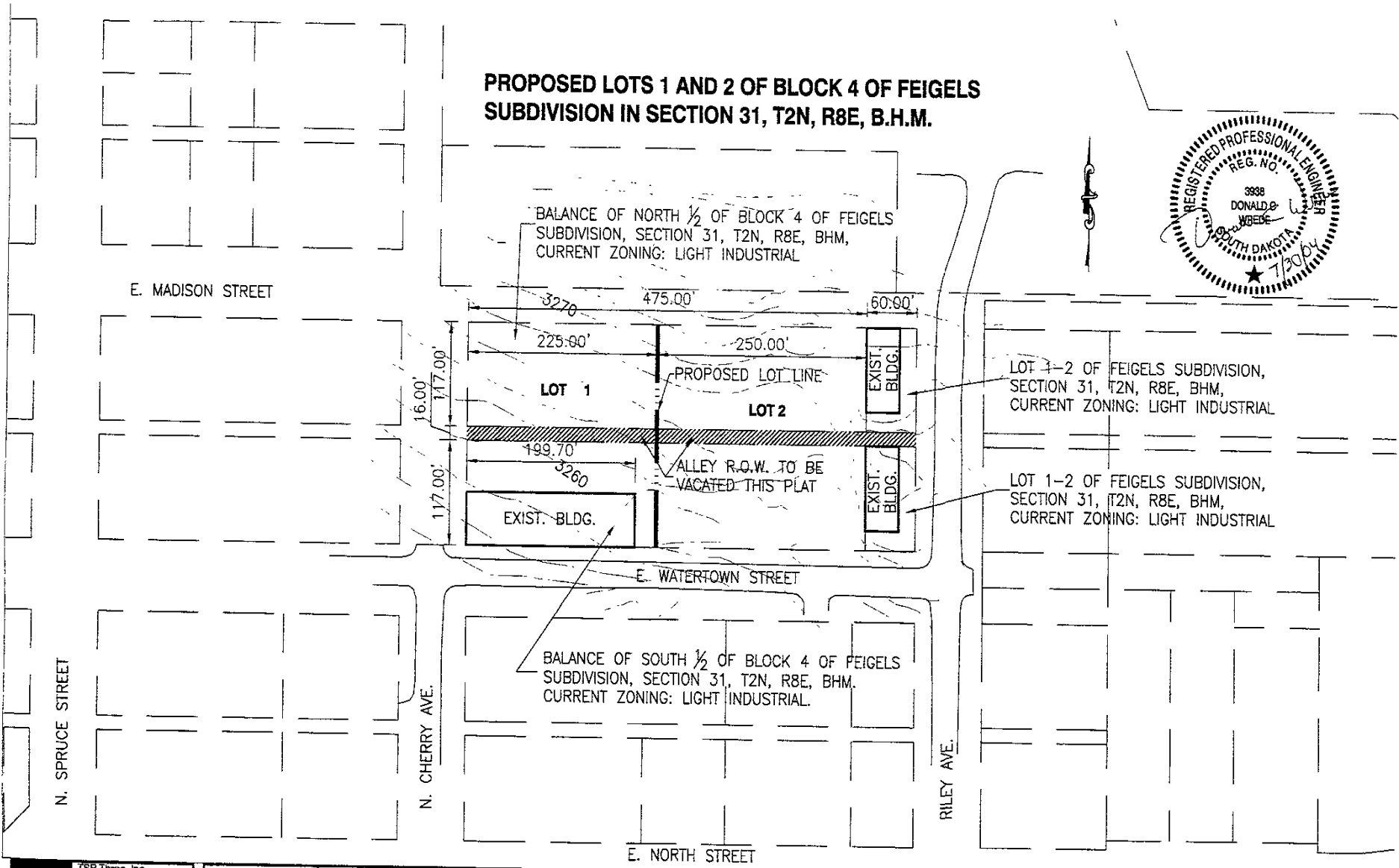


BALANCE OF NORTH 1/2 OF BLOCK 4 OF FEIGELS  
SUBDIVISION, SECTION 31, T2N, R8E, BHM,  
CURRENT ZONING: LIGHT INDUSTRIAL

LOT 1-2 OF FEIGELS SUBDIVISION,  
SECTION 31, T2N, R8E, BHM,  
CURRENT ZONING: LIGHT INDUSTRIAL

LOT 1-2 OF FEIGELS SUBDIVISION,  
SECTION 31, T2N, R8E, BHM,  
CURRENT ZONING: LIGHT INDUSTRIAL

BALANCE OF SOUTH 1/2 OF BLOCK 4 OF FEIGELS  
SUBDIVISION, SECTION 31, T2N, R8E, BHM.  
CURRENT ZONING: LIGHT INDUSTRIAL.



**TSP**  
TSP Three, Inc.  
600 Kansas City Street  
Rapid City, SD 57701-2712  
P: (605) 343-6102  
F: (605) 343-7159  
E-Mail: tspthree@tspmap.com

E. WATERTOWN STREET 4-PLEXES	03040315
LAYOUT PLAT	
Scale 1"=100'	