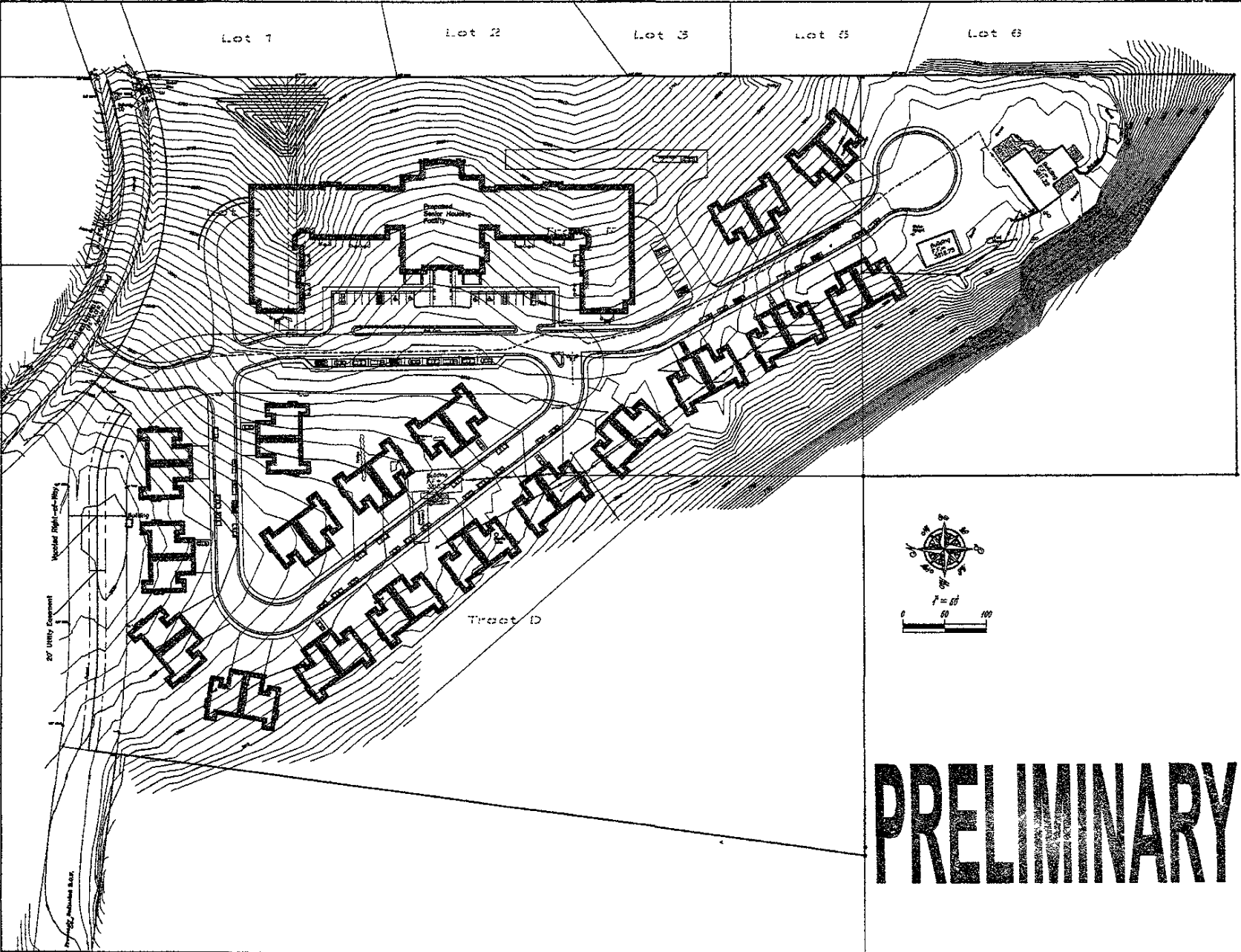


Lot 1 Lot 2 Lot 3 Lot 4 Lot 5



Proposed Site Layout - Lot 3 of Tower Ridge Subdivision, and Tracts D, F and G in the NW 1/4 of Section 23, T1N, R7E, BHM, Rapid City, Pennington County, South Dakota

3022 Main Street
 P.O. Box 814
 Rapid City, South Dakota
 57709
 (605) 346-1555
 (605) 347-1112 (fx)

**Fisk Land Surveying
 & Consulting
 Engineers, Inc.**

PRELIMINARY

Surveyed by: GJM/BL
 Drawn by: RWF/LAR
 Checked by:
 Revisions: 4/4/04
 4/29/04
 4/29/04
 Project No. 04-04-03