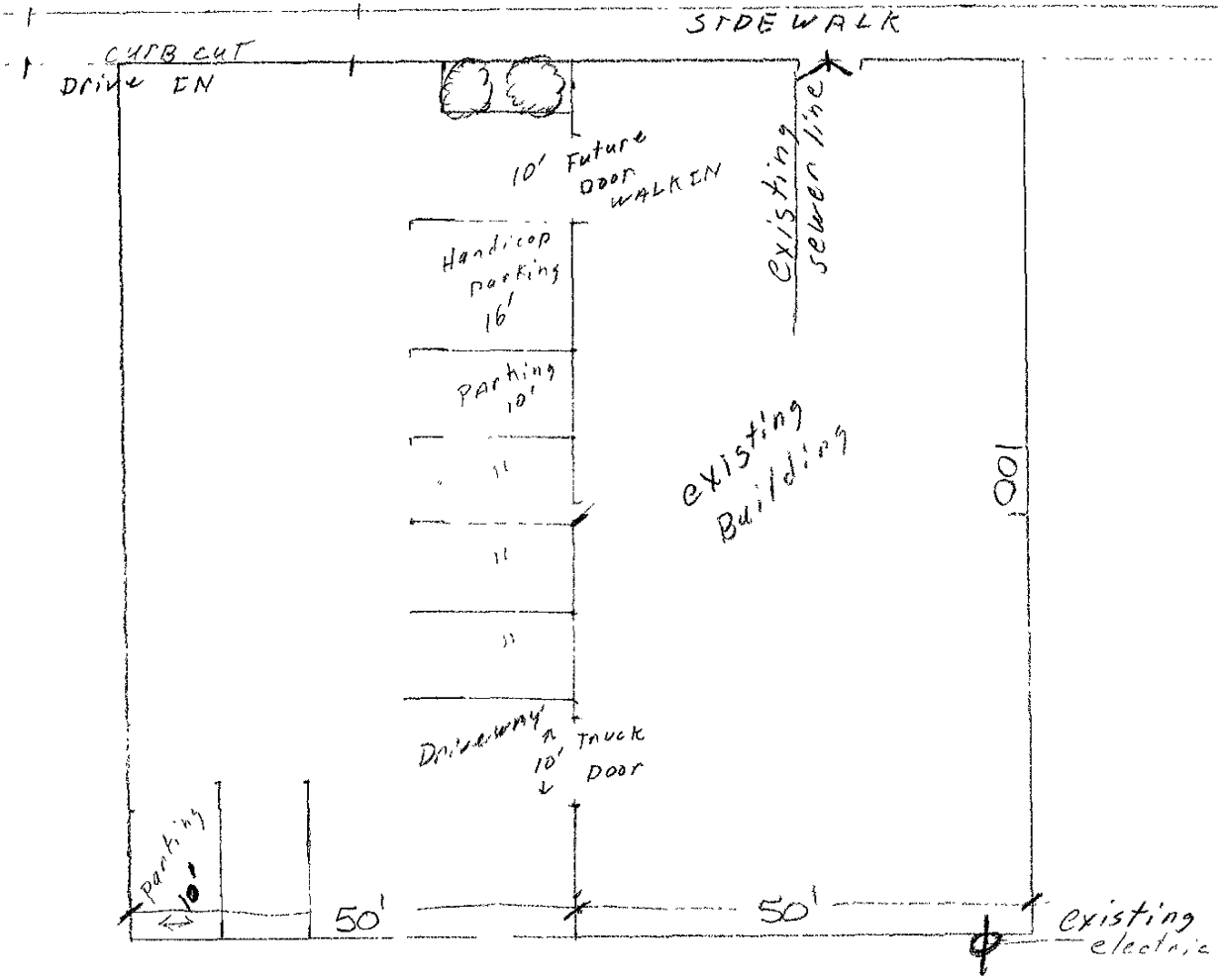


1116
Jackson Blvd



Alley

Scale
1" = 20'

Rausch
Monuments
site
plan

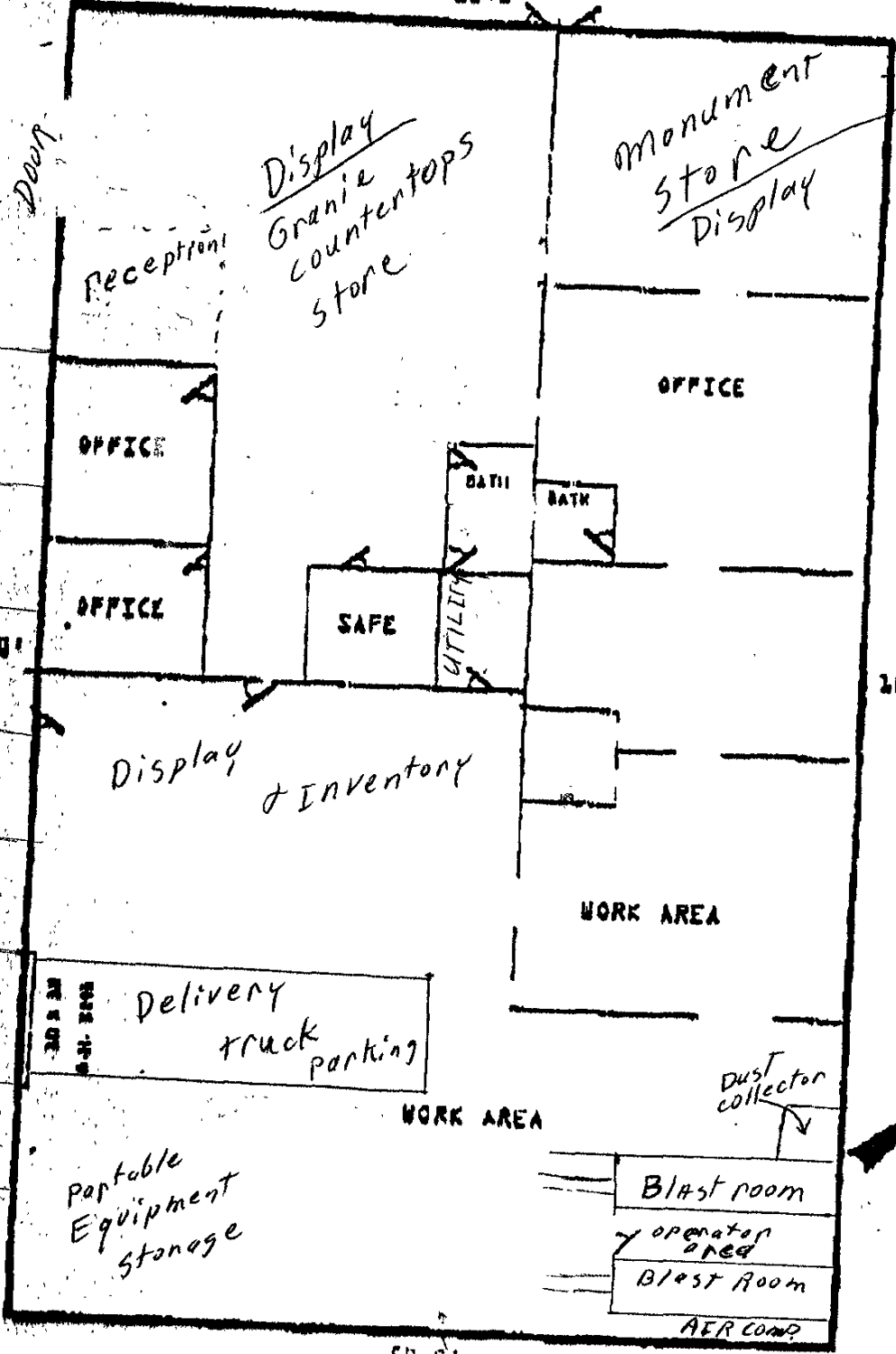
RECEIVED

JUN 23 2004

Rapid City Growth
Management Department

Chuck Rausch
1116 Jackson Blvd

50.0'



RECEIVED

JUN 23 2004

Rapid City Growth Management Department

ALLEY