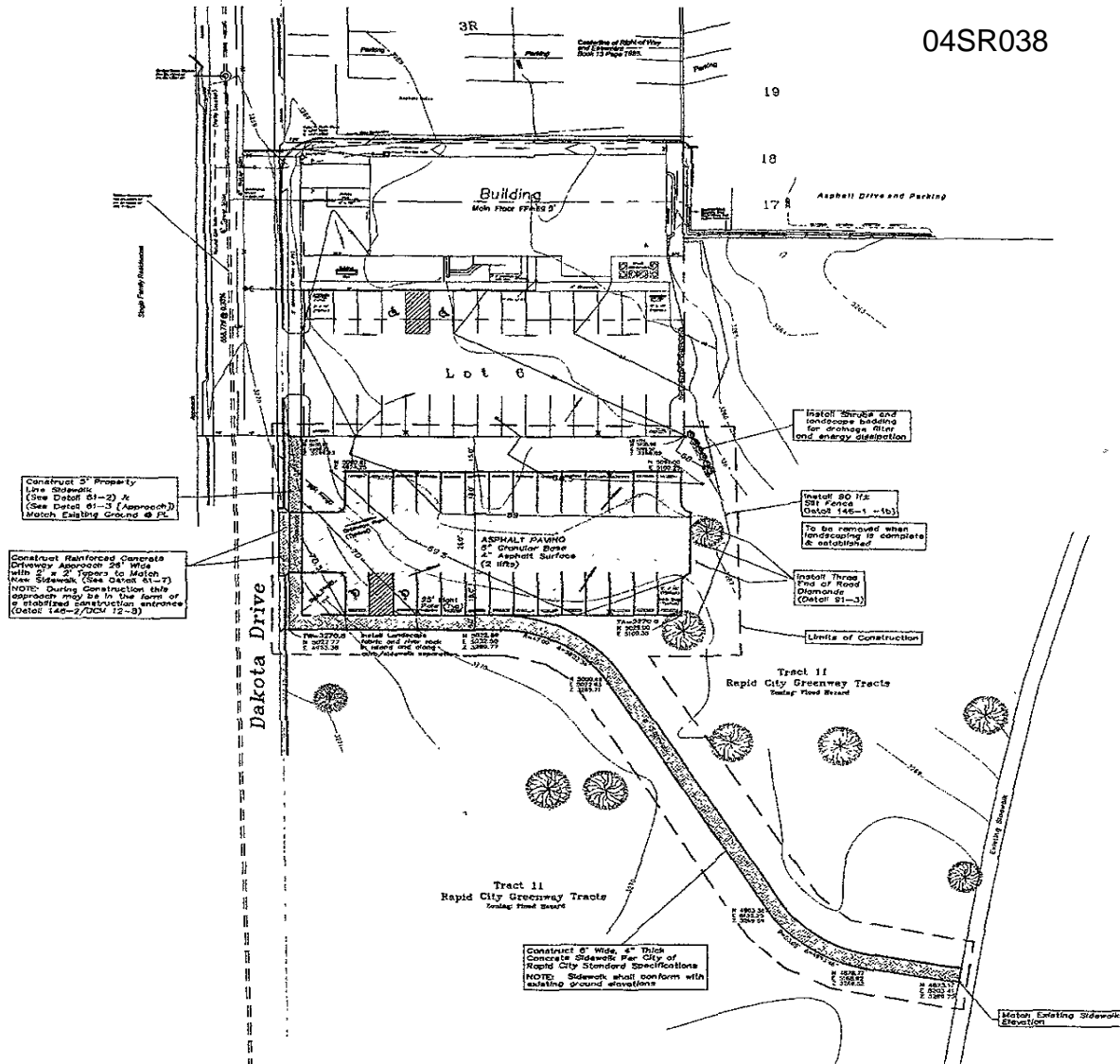


04SR038



Construct 3' Properly
Level Shoulder
(See Detail 61-2) &
(See Detail 61-3 (Approach))
Match Existing Grading @ PL

Construct Reinforced Concrete
Driveway Approach 26' Wide
with 2" x 2" Ties to Match
with Sidewalk (See Detail 61-7)
NOTE: During construction this
approach may be in the form of
a stabilized construction entrance
(Detail 146-2/DCN 12-3)

Install 6" x 6" x 6" and
landscape building
for drainage into
oil-drainage destination

Install 90 Wx
2" Force
Detail 146-1 + 1b)

To be removed when
landscaping is complete
& established

Install Three
Feet of Road
Demand
(Detail 61-3)

Limits of Construction

Construct 6' Wide, 4" Thick
Concrete Sidewalk per City of
Rapid City Standard Specifications
NOTE: Sidewalk shall conform with
existing ground elevations

- Legend**
- = Secondary Sewer Station
 - = Secondary Sewer Man
 - = Water Valve
 - = Water Structure
 - = Fire Hydrant
 - = Water Main
 - = Firehouse Building
 - = Area Light
 - = Utility Pole
 - = Gas Meter
 - = Utility Ejector (Inverted)
 - = Sign or Marker
 - = Sign
 - = Chain Link Fencing
 - = Wood Fence
 - = Top of Structure
 - = Top of Asphalt
 - = 10" Deciduous Tree
 - = 18" Deciduous Tree
 - = Coniferous Tree
- Note: Trees smaller than 4" do not occur.

Site Reference: 3255 98 (Station 308)
City of Rapid City Benchmark - NCR 308
Utilities shown from utility corporations
and maps from electric locators (SD One-Call)
Ticket No. 031 050 547

NOTE: All traffic control within the Right-of-Way shall conform to MUTCD standards.

NOTE: Maintain one lane of traffic on Dakota Drive. See Detail 20-1 for signage. If a closure of Dakota Drive becomes necessary, contractor shall submit a traffic control plan prior to commencement of work within the Right-of-Way.

NOTE: All work within the Dakota Drive ROW and adjacent Tracts shall be in conformance with the City of Rapid City Standard Specifications for Public Works Construction - 2004 Edition.

NOTE: All disturbed areas shall be reseeded, fertilized and mulched.

TOPOGRAPHIC MAP AND PARKING LOT DESIGN
 Tract 11
 Rapid City Greenway Tracts
 SE1/4 SEC. 3, T1N, R7E, B7M
 RAPID CITY, SOUTH DAKOTA

Fisk Land Surveying
 & Consulting
 Engineers, Inc.



Date: 5/27/04
 Surveyed by: RMO
 Drawn by: LJP
 Created by: WF
 Revisions: 1/2/04
 6/24/04 - RWF