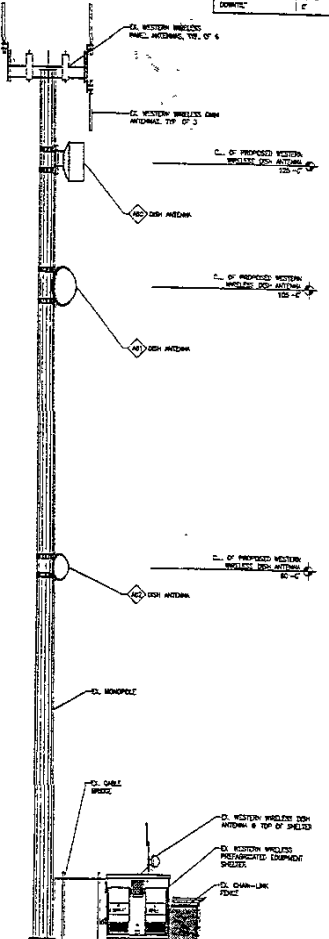


EX. MONOPOLE/ANTENNA DESIGN AND ANALYSIS BY GOLDER MONOPOLES DIRECT RESPONSIBLE FOR REVIEW OF PROPOSED ANTENNA.

NOTE

← TO EX. EXIST ANTENNA
150'-0"

← TO EX. MONOPOLE
150'-0"

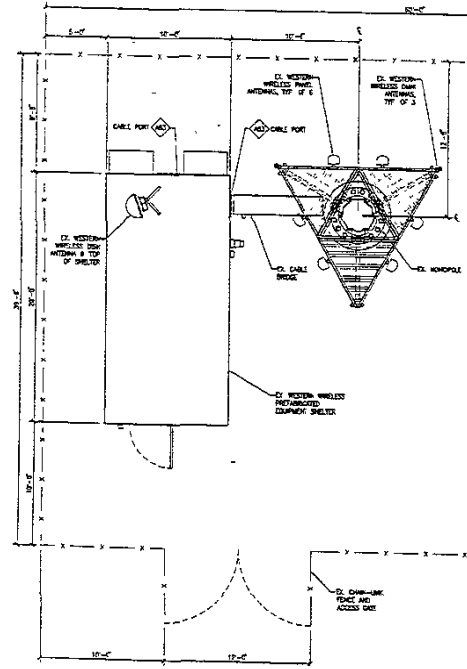


CHOP
CROSSING 0'-0"

	ANTENNA LEGEND		
	OWNER	SECTOR	SECTOR
AZIMUTH	360.00	217.00	217.00
ANTENNA MODEL	953 5PA-150AC	952 PAU-SAC	951 PAU-SAC
ANTENNA COLOR			
ANTENNA HIGHT	150'	150'	150'
SCAN TYPE/AZIM	DPH-N-107/DPH-N-150	DPH-N-107/DPH-N-150	DPH-N-107/DPH-N-150
CORN LENGTH	150"	150"	150"
CORNWAVE	0'	0'	0'

DESCRIPTION	SEE REFERENCE
PROPOSED WESTERN WIRELESS BY MONOPOLE (DW) ANTENNA	(A) (B) (C)
PROPOSED WESTERN WIRELESS BY MONOPOLE (SW) ANTENNA	(D) (E) (F)
PROPOSED WESTERN WIRELESS BY MONOPOLE (HW) ANTENNA	(G) (H) (I)
EX. WESTERN WIRELESS DSW ANTENNA	(J) (K) (L)
EX. WESTERN WIRELESS DSW ANTENNA	(M) (N) (O)
EX. WESTERN WIRELESS DSW ANTENNA	(P) (Q) (R)
EX. WESTERN WIRELESS DSW ANTENNA	(S) (T) (U)
EX. WESTERN WIRELESS DSW ANTENNA	(V) (W) (X)
EX. WESTERN WIRELESS DSW ANTENNA	(Y) (Z) (AA)

KEY NOTE LEGEND



WESTERN WIRELESS
2300 15TH AVENUE S.E. #400
BELLEVUE, WASHINGTON 98008
PHONE 425.888.8726
FAX 425.888.0276

STATE OF WASHINGTON
COUNTY OF KING
I, J. J. MCGHEE, COUNTY CLERK, do hereby certify that the above is a true and correct copy of the information contained herein and that the same has been filed for record in the County of King, Washington, on this 15th day of December, 2011.

THIS DRAWING IS COPYRIGHTED AND IS THE SOLE PROPERTY OF THE OWNER. IT IS PRODUCED SOLELY FOR USE BY THE OWNER AND NO IMPLIED REPRESENTATION OF USE OF THIS DRAWING AND/OR THE INFORMATION CONTAINED HEREIN IS FURNISHED WITHOUT THE WRITTEN PERMISSION OF THE OWNER.

REVISIONS

NO.	DATE	DESCRIPTION
1	12/15/11	ISSUE FOR PERMIT

PERMITS

NO.	DATE

BOX ELDER
SITE NUMBER: SDRC-072
JOB NUMBER: 203905
DATE: 12/15/11
JOB ADDRESS: 147 44705562A LONG 10370423 FW BOX ELDER, SD 57718

SHED TITLE
NORTH ELEVATION
ENLARGED SITE PLAN