

04PL083

PRELIMINARY SITE PLAN BROOKFIELD SUBDIVISION

LOCATED IN THE NE¹/₄ OF THE SE¹/₄,
SECTION 13, T2N, R7E, B.H.M.,
PENNINGTON COUNTY, SOUTH DAKOTA

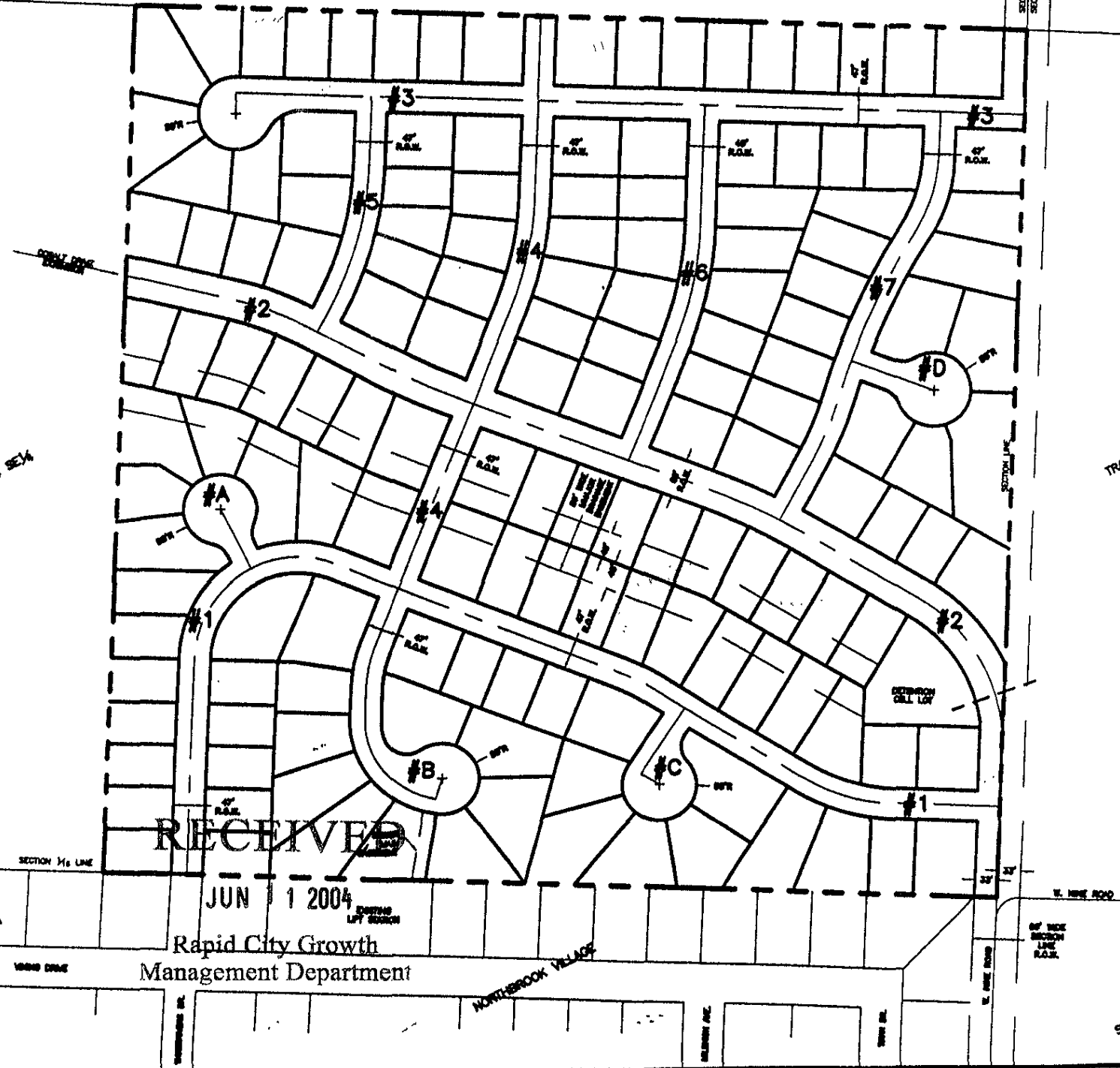


JUNE 8, 2004
NOT TO SCALE

SW¹/₄ NE¹/₄

SECTION 14 LINE

SECTION 13
SECTION 16
OF THE
SECTION
R.O.W.



RECEIVED

JUN 1 2004

Rapid City Growth
Management Department

NORTHBROOK VILLAGE

C:\DRAWINGS\2004\10\1.DWG, 8/11/2004 2:20:15 PM