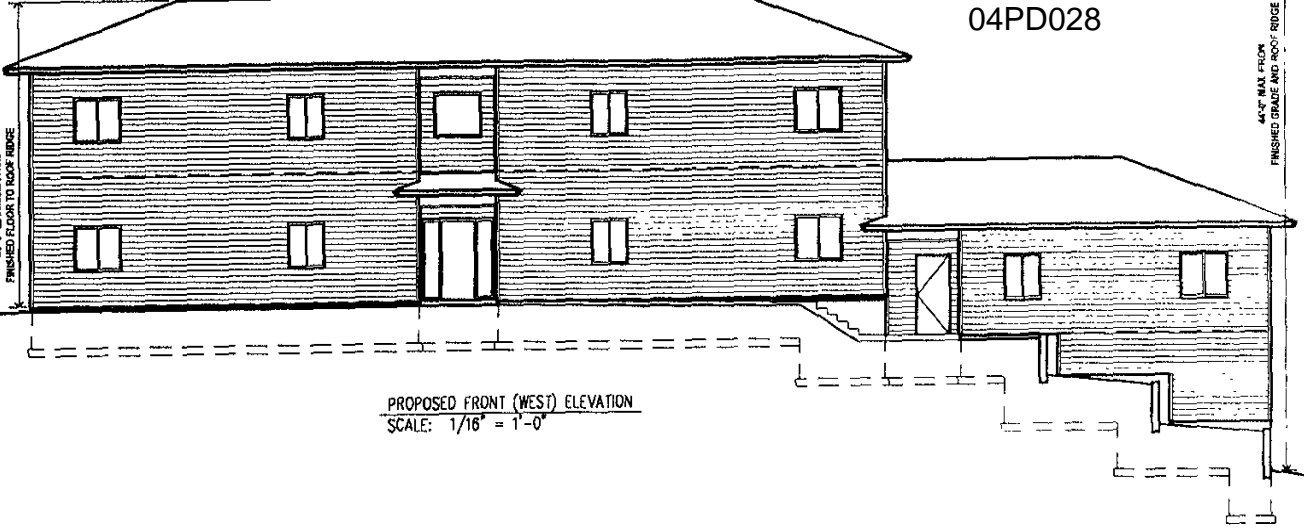
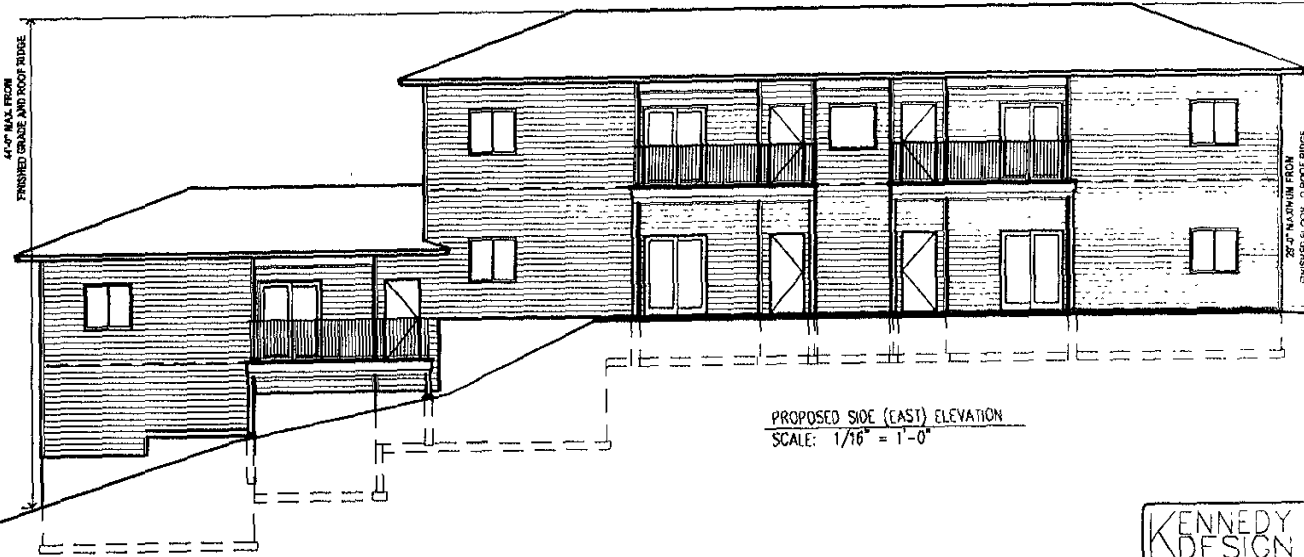


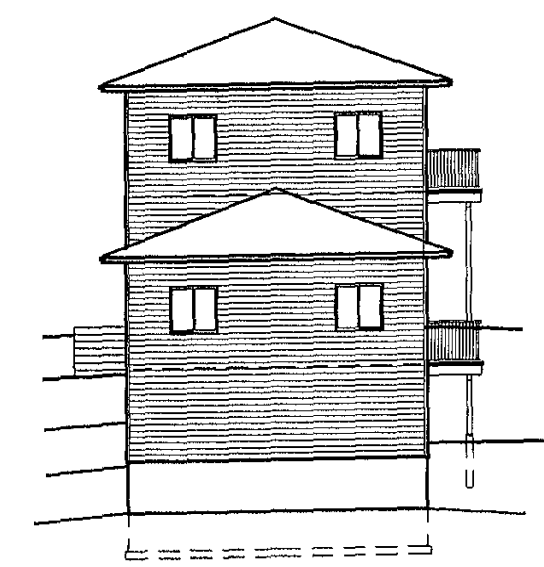
44'-0" MAX FROM FINISHED GRADE AND ROOF RIDGE



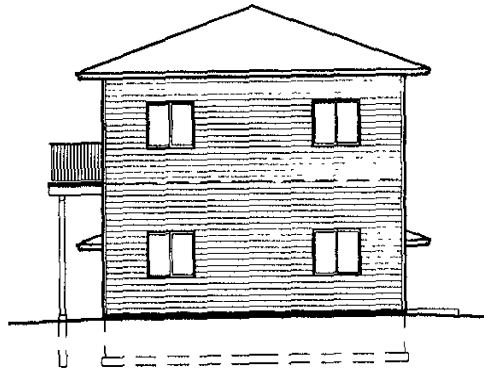
PROPOSED FRONT (WEST) ELEVATION
SCALE: 1/16" = 1'-0"



PROPOSED SIDE (EAST) ELEVATION
SCALE: 1/16" = 1'-0"



PROPOSED REAR (SOUTH) ELEVATION
SCALE: 1/16" = 1'-0"



PROPOSED FRONT (NORTH) ELEVATION
SCALE: 1/16" = 1'-0"

**KENNEDY
DESIGN
GROUP INC**
1805 EXCHANGED PINES DRIVE
RAPID CITY, SD 57701
PHONE: 605.342.5314
FAX: 605.394.9588

PROJECT:
5 UNIT
APARTMENT BLDG
RAPID CITY, SD

**EXTERIOR
ELEVATIONS**

PROJECT NO 403
FILE NO 403-4
DRAWN BY RKK
CHECK BY. RKK
DATE 04 29 04
REVISIONS XXXX

3.1
Drawing Number