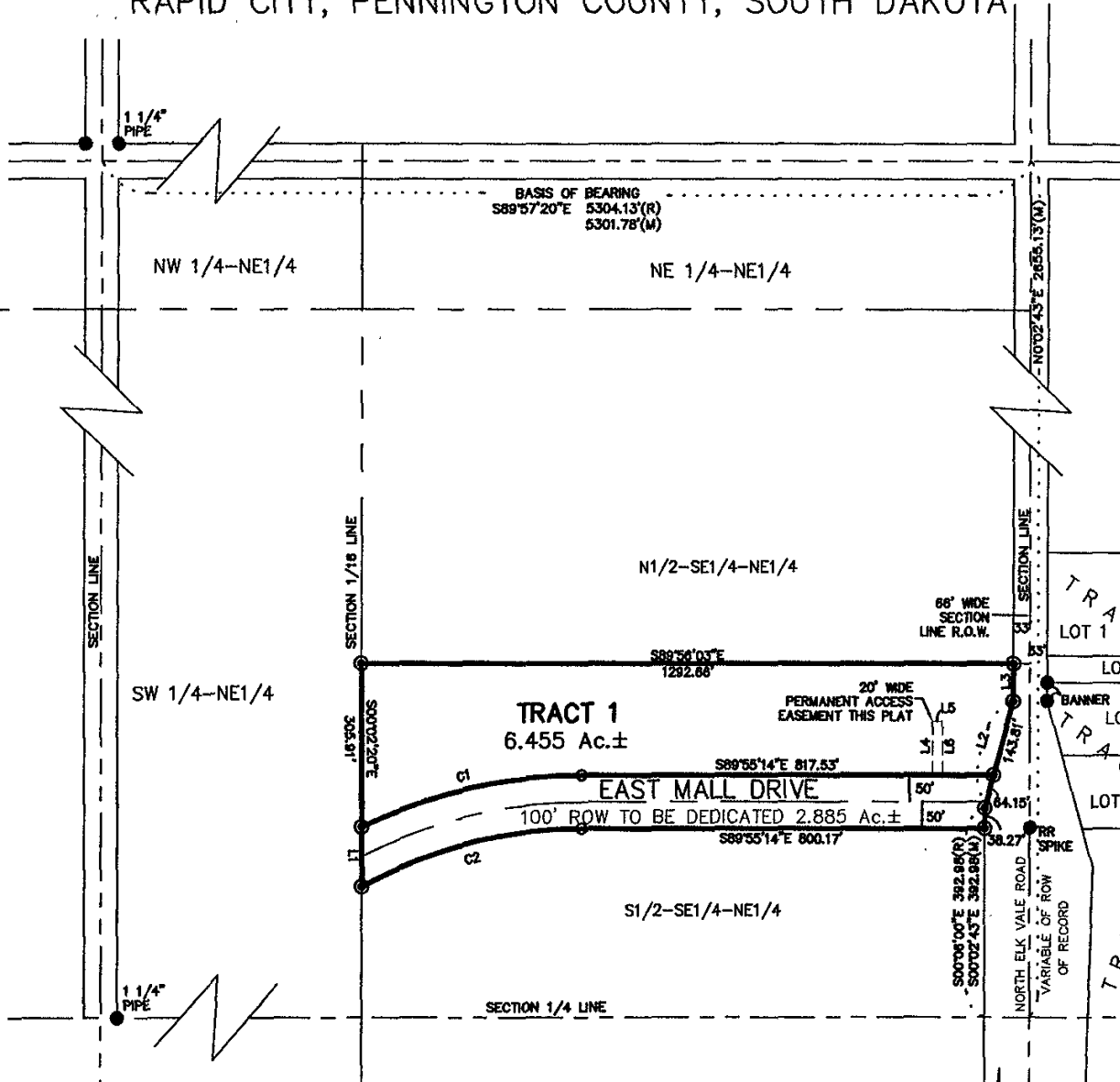


PLAT OF TRACT 1 NEZ PERCE SUBDIVISION

LOCATED IN THE S1/2 OF THE SE1/4 OF THE NE1/4
SECTION 28, T2N, R8E, BHM
RAPID CITY, PENNINGTON COUNTY, SOUTH DAKOTA



CITY HALL 1903

Renner Associates, LLC.

616 Sixth St. * Rapid City, SD 57701 * 605/721-7310
FAX: 605/721-7313 * E-MAIL: Gary@RennerAssoc.com
* Spearfish 605/717-0016 *

APRIL 28, 2004
N.T.S.