

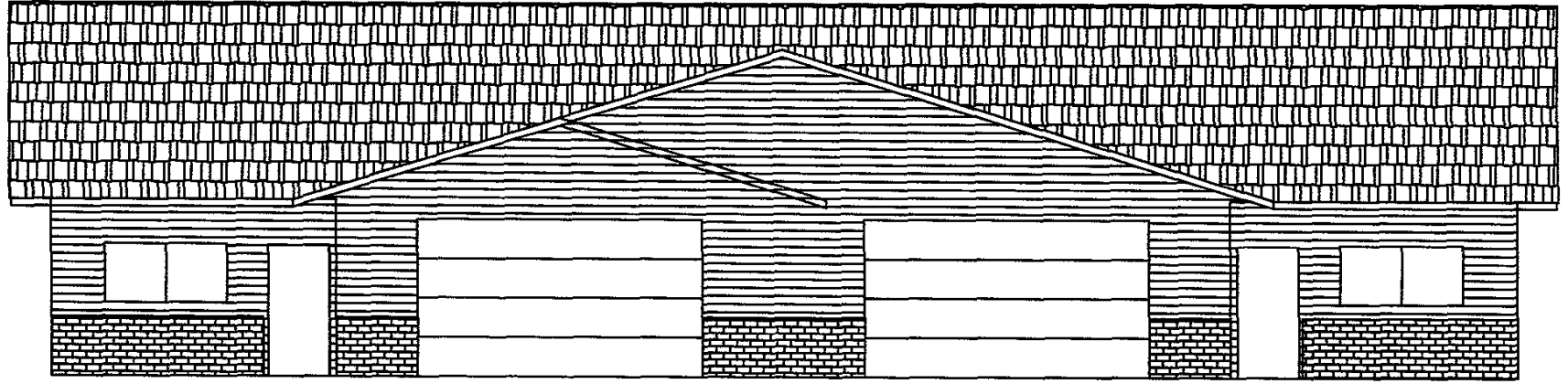
# The Homestead Gardens

## Town Home Elevation

PRELIMINARY



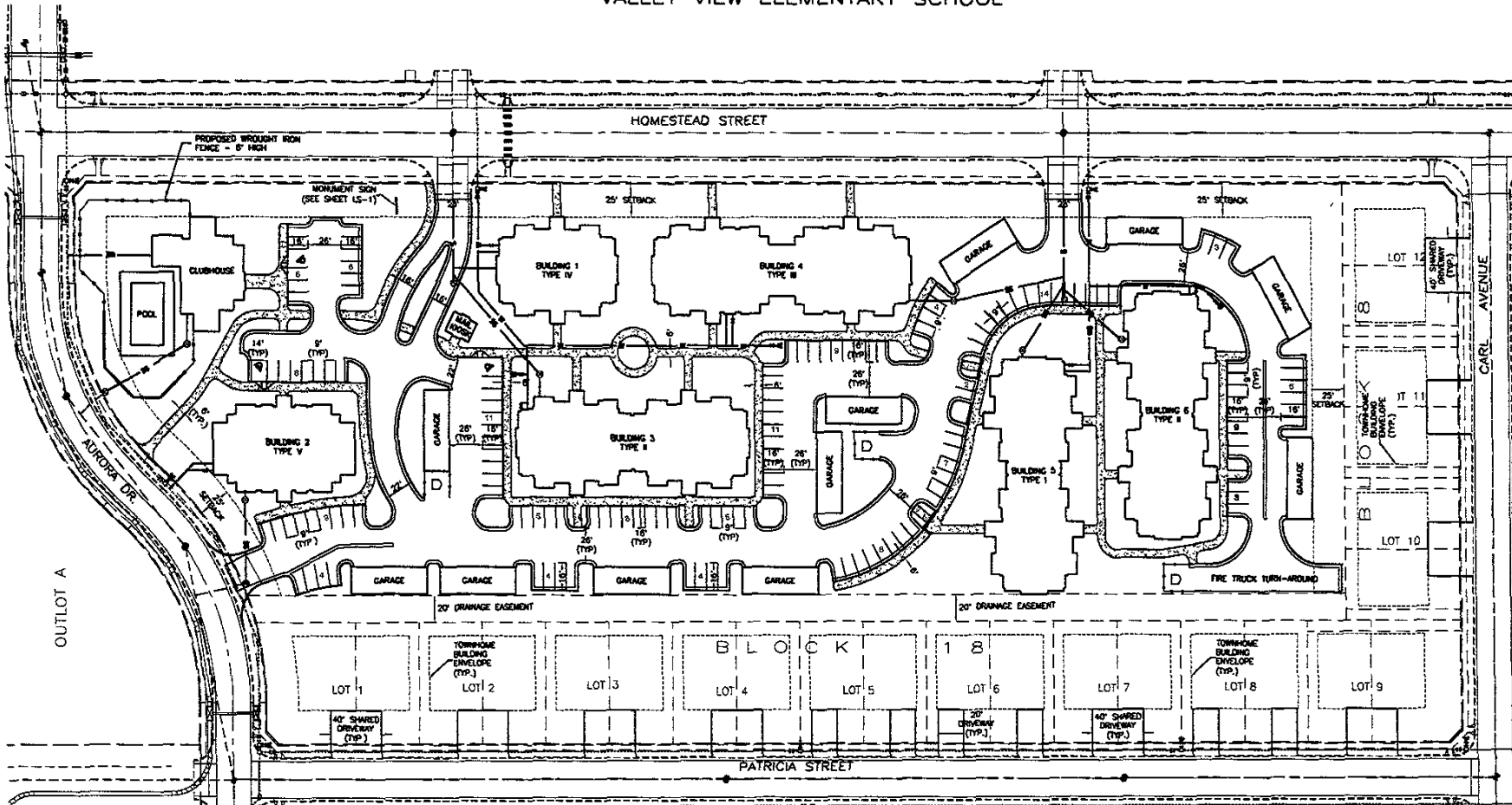
**NOT FOR  
CONSTRUCTION**



PRELIMINARY

**NOT FOR  
CONSTRUCTION**

VALLEY VIEW ELEMENTARY SCHOOL



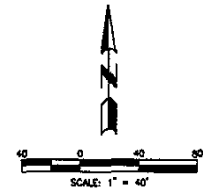
**UNIT DISTRIBUTION**

NUMBER OF UNITS	12 @ 1BR
	64 @ 2BR
	24 @ 3BR
<b>TOTAL</b>	<b>100 UNITS</b>

**PARKING SUMMARY**

55 IN GARAGES	
133 OPEN	
12 AT CLUBHOUSE	
<b>TOTAL</b>	<b>200 SPACES</b>

- LEGEND**
- EXISTING CURB AND GUTTER
  - PROPOSED CURB AND GUTTER
  - PROPOSED CURB AND GUTTER WITH STANDARD SIDEWALK
  - PROPOSED THICKENED EDGE SIDEWALK
  - PROPOSED 6" SIDEWALK
  - D PROPOSED DUMPSTER AND ENCLOSURE
  - EXISTING WATER LINE WITH WATER VALVE
  - EXISTING SANITARY SEWER LINE WITH MANHOLE
  - PROPOSED 8" WATER MAIN
  - PROPOSED FIRE HYDRANT AND VALVE
  - PROPOSED P.V.
  - PROPOSED WATER SERVICE
  - PROPOSED 8" SANITARY SEWER LINE
  - PROPOSED SANITARY SEWER MANHOLE
  - PROPOSED SANITARY SERVICE CLEANOUT
  - PROPOSED 6" SANITARY SERVICE



**D.D.I. DESIGN INTERNATIONAL, INC.**  
 PROFESSIONAL STRUCTURAL & CIVIL ENGINEERING CONSULTANTS

10000  
 10000  
 10000

**PROJECT INFORMATION**

PROJECT NO.	03-0083
DATE	10/17/04
DESIGNED BY	WJ/A
CHECKED BY	WJ/A
DATE	10/17/04
SCALE	AS SHOWN
DATE	10/17/04
SCALE	AS SHOWN
DATE	10/17/04
SCALE	AS SHOWN

**THE HOMESTEAD GARDENS SITE PLAN**