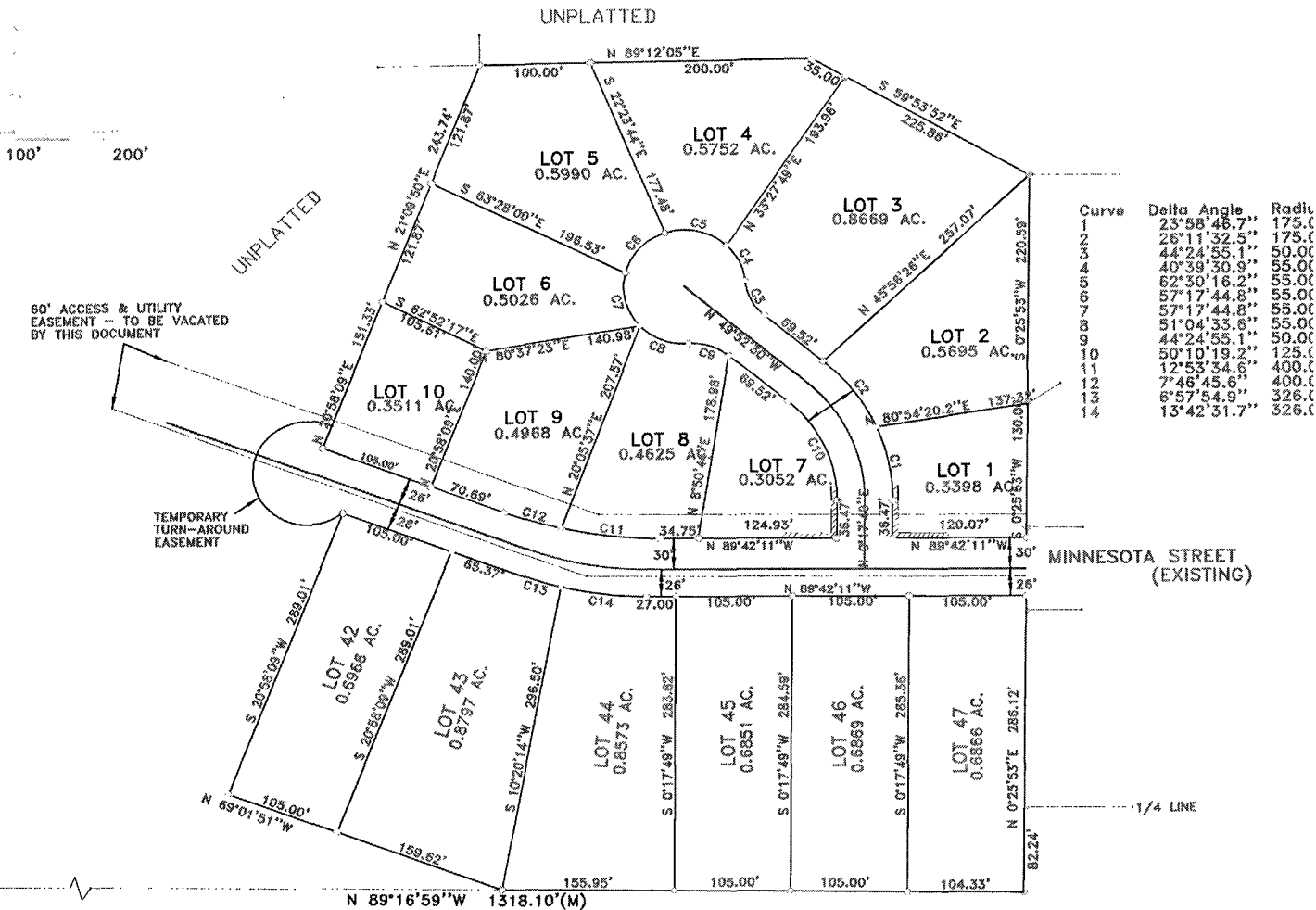


MINNESOTA RIDGE SUBDIVISION #2

PLAT OF LOTS 1 THRU 10 AND 42 THRU 47

LOCATED IN SW1/4 OF SECTION 13, T1N, R7E, B.H.M.
RAPID CITY, PENNINGTON COUNTY, SOUTH DAKOTA



Curve	Delta Angle	Radius
1	23°58'46.7"	175.00
2	26°11'32.5"	175.00
3	44°24'55.1"	50.00
4	40°39'30.9"	55.00
5	62°30'16.2"	55.00
6	57°17'44.8"	55.00
7	57°17'44.8"	55.00
8	51°04'33.6"	55.00
9	44°24'55.1"	50.00
10	50°10'19.2"	125.00
11	12°53'34.6"	400.00
12	7°46'45.6"	400.00
13	6°57'54.9"	326.00
14	13°42'31.7"	326.00

LEGEND

- ⊙ Found Survey Monument as Noted.
- ⊙ Set 5/8" Rebar with Plastic Cap marked "Hanson #6251"
- (M) Measured This Survey
- (R) Survey Information of Record
- ////// Non-Access Easement

UNPLATTED

Prepared by:
Hanson Surveying & Mapping
832 Horace Mann Drive
Rapid City, SD 57701
605-388-9652

March 24, 2004

Curve	Delta Angle	Radius	Arc
1	23°58'46.7"	175.00	73.24
2	26°11'32.5"	175.00	80.00
3	44°24'55.1"	50.00	38.76
4	40°39'30.9"	55.00	39.03
5	62°30'16.2"	55.00	60.00
6	57°17'44.8"	55.00	55.00
7	57°17'44.8"	55.00	55.00
8	51°04'33.6"	55.00	49.03
9	44°24'55.1"	50.00	38.76
10	50°10'19.2"	125.00	109.46
11	12°53'34.6"	400.00	90.01
12	7°46'45.6"	400.00	54.31
13	6°57'54.9"	326.00	39.63
14	13°42'31.7"	326.00	78.00

Drainage and Utility Easements:
are interior side of all lot lines.

tree R.O.W. dedicated by this plat : ____ AC. +/-

all obstructions and major utility easements shown hereon shall be kept
all obstructions including but not limited to buildings, walls, fences, hedges,
and shrubs. These easements grant to all public authorities the right to
install, operate, maintain, inspect, and repair such improvements and
utilities as it deems expedient to facilitate drainage from any source.