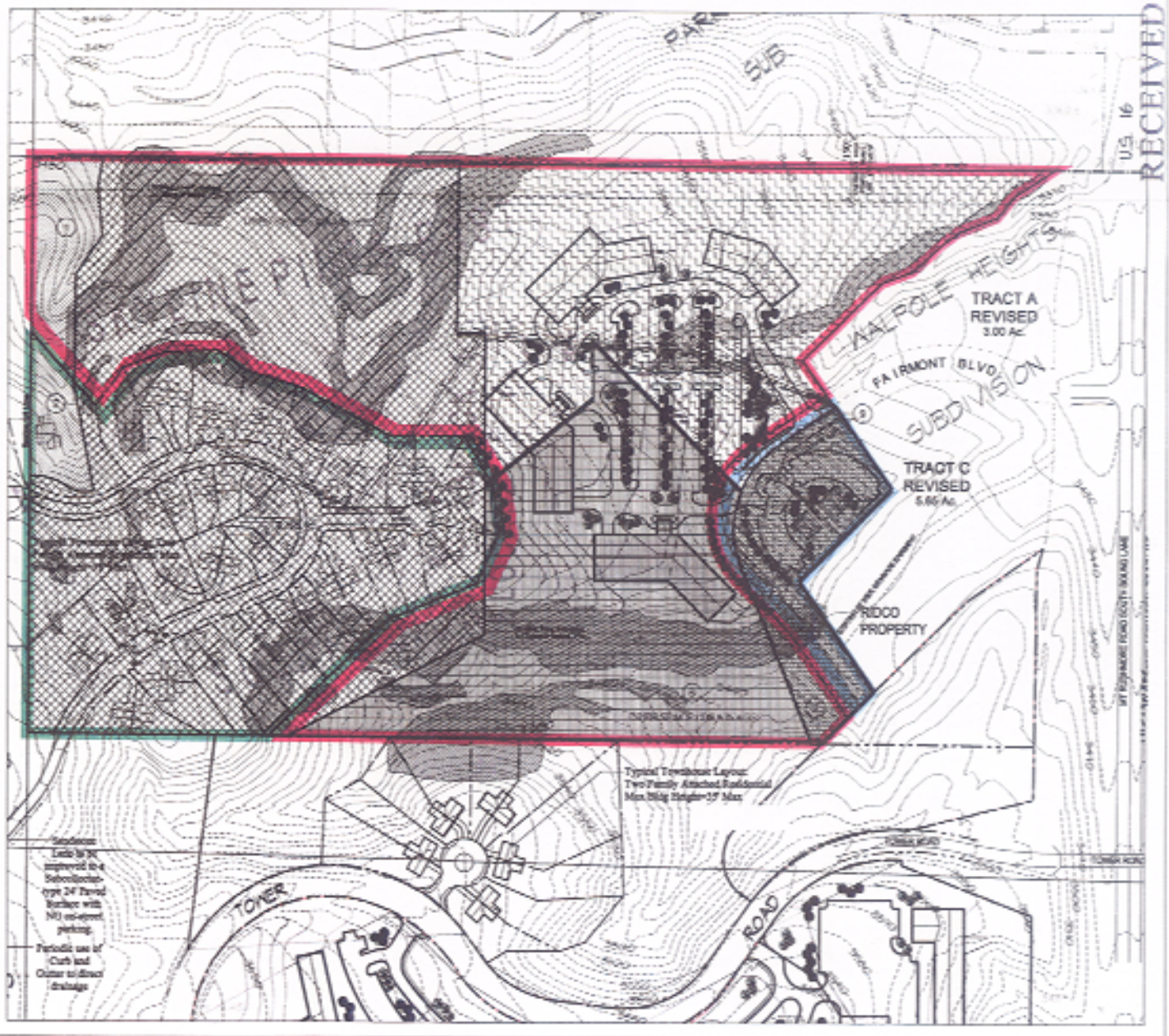


Skyline Pines East Proposed Tract Balance Rezone Exhibit

- KEY:**
- CURRENTLY PARK FOREST
 - CURRENTLY LDR
 - CURRENTLY OFFICE COMMERCIAL
 - CURRENTLY GENERAL COMMERCIAL
 - CURRENTLY MDR
 - PROPOSED GENERAL COMMERCIAL
 - PROPOSED LDR/RESIDENTIAL
 - PROPOSED OFFICE COMMERCIAL
- ① AREA TO BE REZONED FROM PARK FOREST TO OFFICE COMMERCIAL
 - ② AREA TO BE REZONED FROM PARK FOREST TO LDR/RES
 - ③ AREA TO BE REZONED FROM LDR TO OFFICE COMMERCIAL
 - ④ AREA TO BE REZONED FROM LDR TO OFFICE COMMERCIAL
 - ⑤ AREA TO BE REZONED FROM MDR TO LDR/RES
 - ⑥ AREA TO BE REZONED FROM MDR TO OFFICE COMMERCIAL
 - ⑦ AREA TO BE REZONED FROM GENERAL COMMERCIAL TO OFFICE COMMERCIAL
 - ⑧ AREA TO BE REZONED FROM MDR TO GENERAL COMMERCIAL
 - ⑨ AREA TO BE REZONED FROM OFFICE COMMERCIAL TO GENERAL COMMERCIAL

Wynn
Associates, Inc.
Civil/Urban Planning
Public & Recreation Planning
10000 13th St., Suite 200, Denver, CO 80231
303.755.1111 Fax 303.755.1112
www.wynnassociates.com

Scale: 1" = 50'
April 8, 2006



RECEIVED
U.S. 16