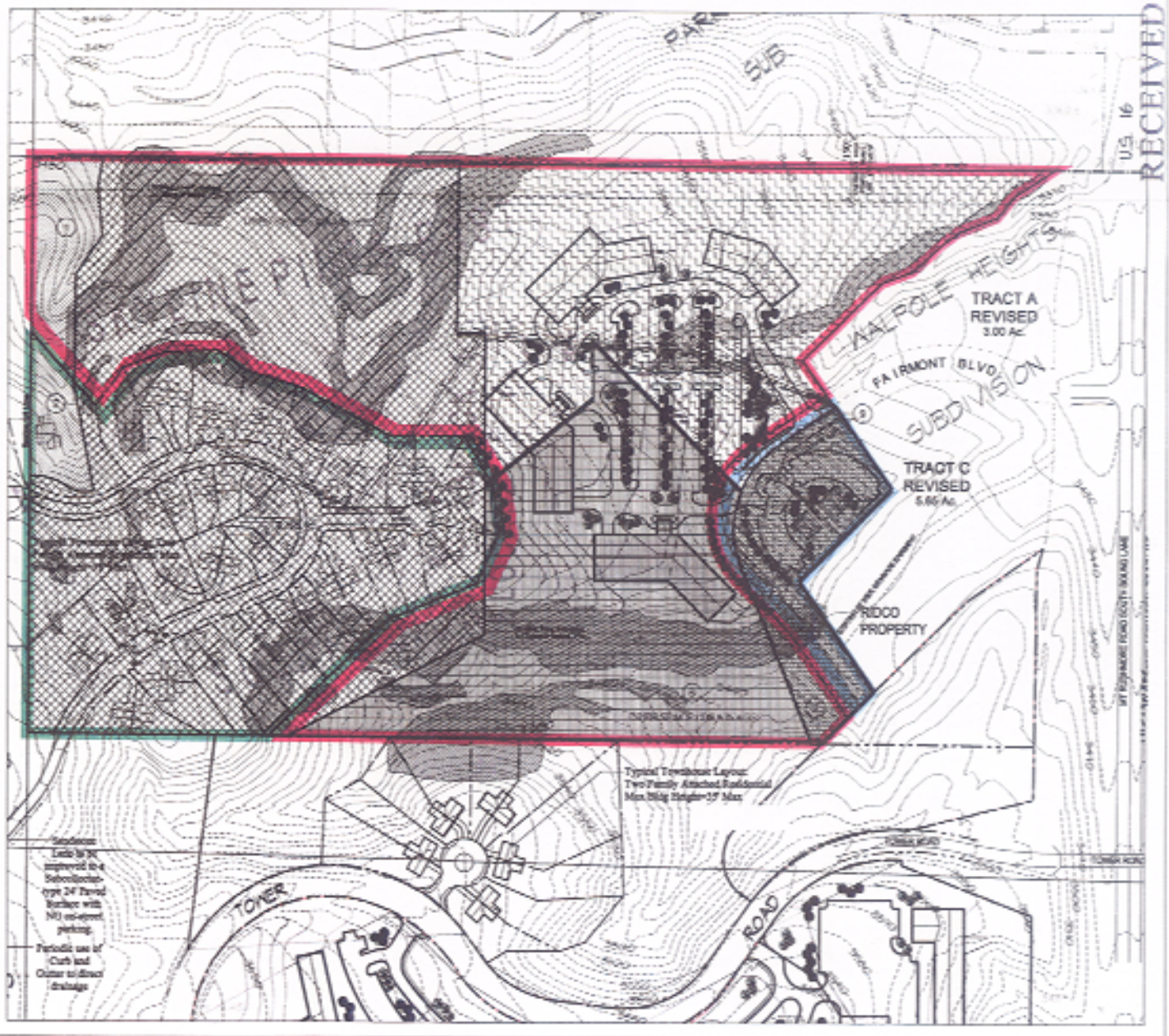


# Skyline Pines East Proposed Tract Balance Rezone Exhibit

- KEY:**
- CURRENTLY PARK FOREST
  - CURRENTLY LDR
  - CURRENTLY OFFICE COMMERCIAL
  - CURRENTLY GENERAL COMMERCIAL
  - CURRENTLY MDR
  - PROPOSED GENERAL COMMERCIAL
  - PROPOSED LDR/RESIDENTIAL
  - PROPOSED OFFICE COMMERCIAL
- ① AREA TO BE REZONED FROM PARK FOREST TO OFFICE COMMERCIAL
  - ② AREA TO BE REZONED FROM PARK FOREST TO LDR/RES
  - ③ AREA TO BE REZONED FROM LDR TO OFFICE COMMERCIAL
  - ④ AREA TO BE REZONED FROM LDR TO OFFICE COMMERCIAL
  - ⑤ AREA TO BE REZONED FROM MDR TO LDR/RES
  - ⑥ AREA TO BE REZONED FROM MDR TO OFFICE COMMERCIAL
  - ⑦ AREA TO BE REZONED FROM GENERAL COMMERCIAL TO OFFICE COMMERCIAL
  - ⑧ AREA TO BE REZONED FROM MDR TO GENERAL COMMERCIAL
  - ⑨ AREA TO BE REZONED FROM OFFICE COMMERCIAL TO GENERAL COMMERCIAL

Wynn  
Associates, Inc.  
Civil/Urban Planning  
Public & Recreation Planning  
10000 13th St., Suite 200, Denver, CO 80231  
303.755.1111 Fax 303.755.1111  
www.wynnassociates.com

April 9, 2006



APR 7 2006

Rapid City Growth  
Management Department