

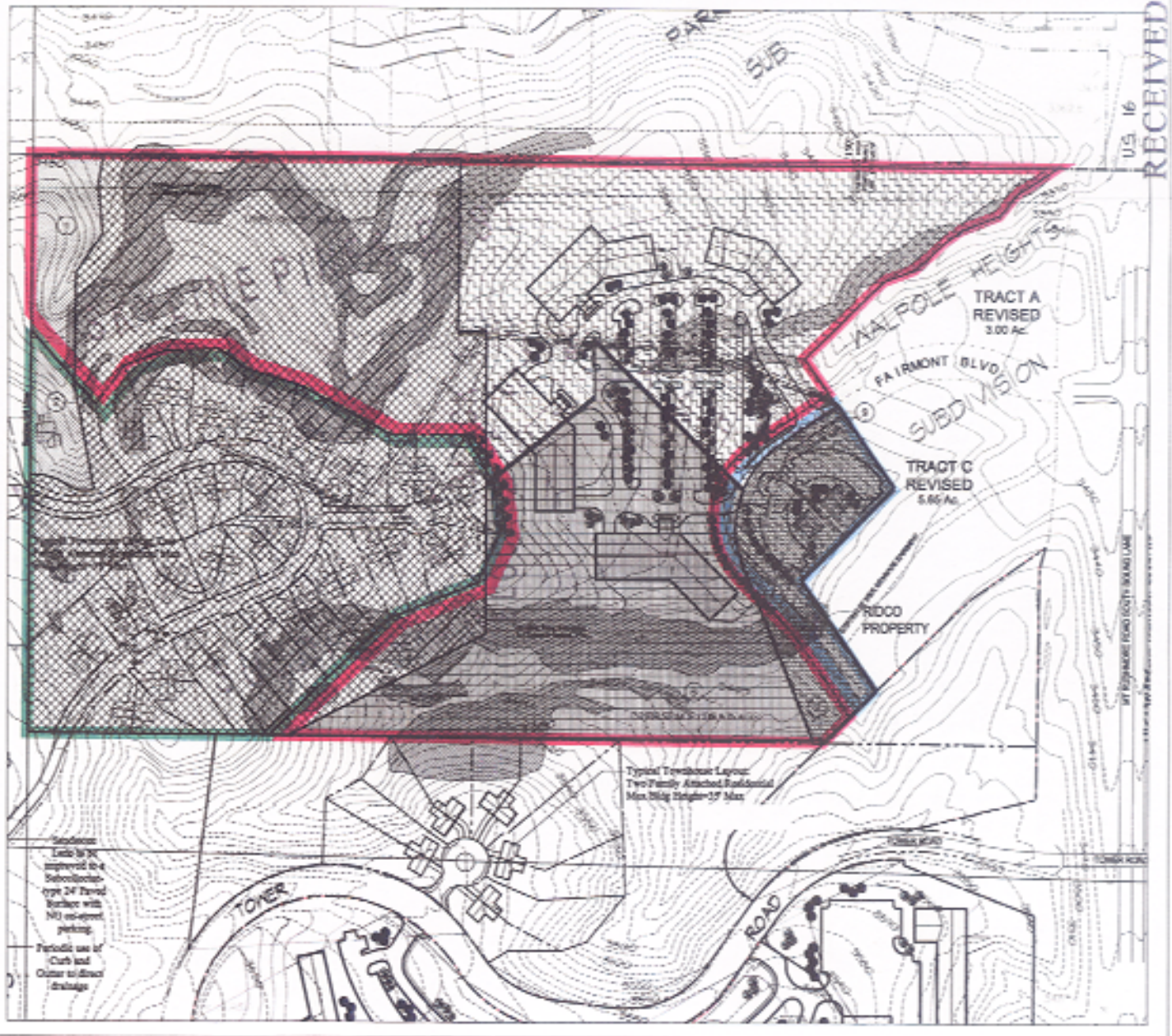
# Skyline Pines East Proposed Tract Balance Rezone Exhibit

- KEY:**
-  CURRENTLY PARK FOREST
  -  CURRENTLY LDR
  -  CURRENTLY OFFICE COMMERCIAL
  -  CURRENTLY GENERAL COMMERCIAL
  -  CURRENTLY MDR
  -  PROPOSED GENERAL COMMERCIAL
  -  PROPOSED LDR/RESIDENTIAL
  -  PROPOSED OFFICE COMMERCIAL
- 1 AREA TO BE REZONED FROM PARK FOREST TO OFFICE COMMERCIAL
  - 2 AREA TO BE REZONED FROM PARK FOREST TO LDR/RES
  - 3 AREA TO BE REZONED FROM LDR TO OFFICE COMMERCIAL
  - 4 AREA TO BE REZONED FROM LDR TO OFFICE COMMERCIAL
  - 5 AREA TO BE REZONED FROM MDR TO LDR/RES
  - 6 AREA TO BE REZONED FROM MDR TO OFFICE COMMERCIAL
  - 7 AREA TO BE REZONED FROM GENERAL COMMERCIAL TO OFFICE COMMERCIAL
  - 8 AREA TO BE REZONED FROM MDR TO GENERAL COMMERCIAL
  - 9 AREA TO BE REZONED FROM OFFICE COMMERCIAL TO GENERAL COMMERCIAL

Wynn  
Associates, Inc.  
Civil/Urban Planning  
Public & Recreation Planning  
10000 130th Ave, Suite 100, Golden, CO 80401  
303.440.1300 Fax: 303.440.1301  
www.wynnassociates.com



April 9, 2006



RECEIVED  
U.S. 16