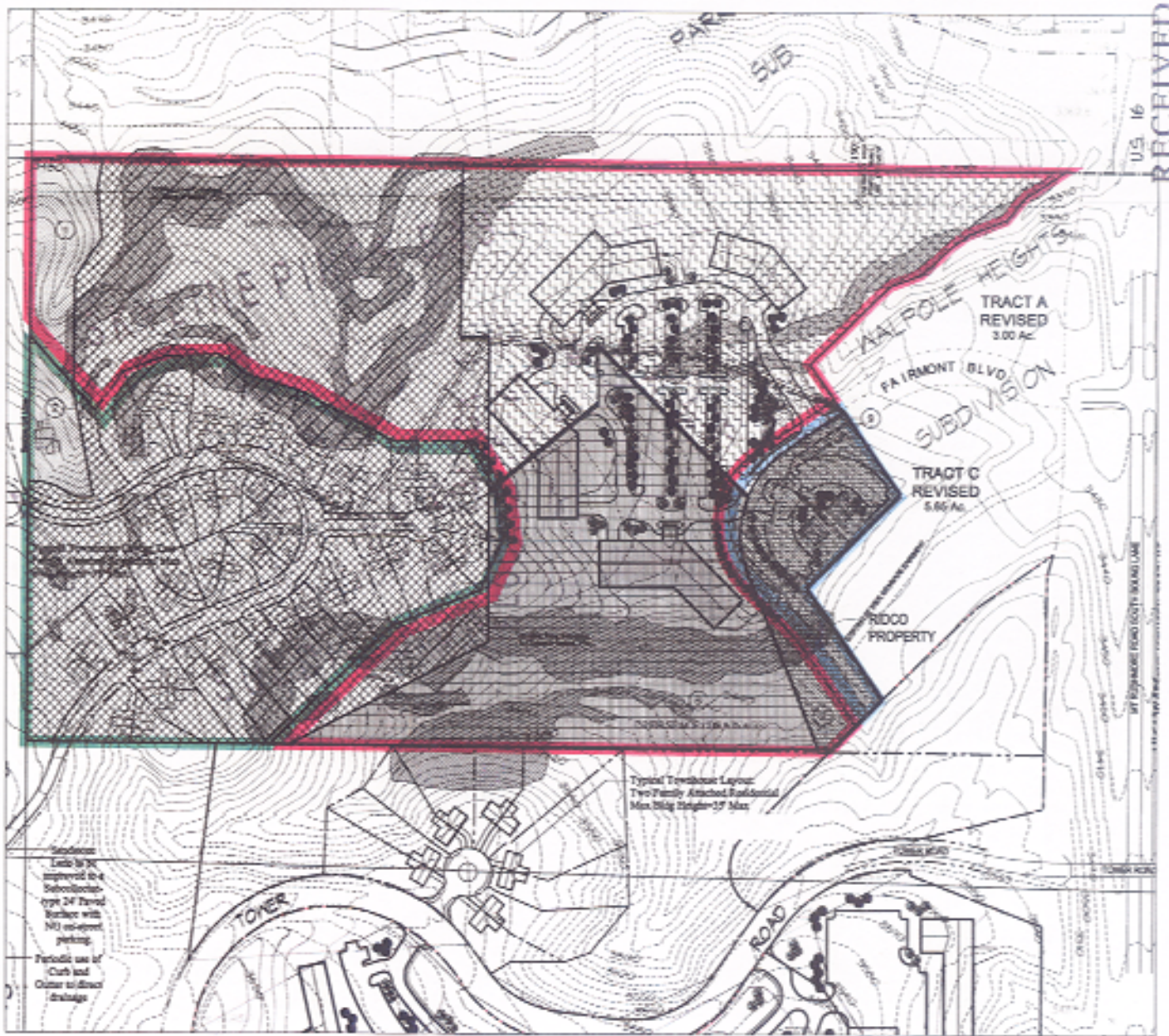


Skyline Pines East Proposed Tract Balance Rezone Exhibit

- KEY:**
- CURRENTLY PARK FOREST
 - CURRENTLY LDR
 - CURRENTLY OFFICE COMMERCIAL
 - CURRENTLY GENERAL COMMERCIAL
 - CURRENTLY MDR
 - PROPOSED GENERAL COMMERCIAL
 - PROPOSED LDR/RESIDENTIAL
 - PROPOSED OFFICE COMMERCIAL
- 1 AREA TO BE REZONED FROM PARK FOREST TO OFFICE COMMERCIAL
 - 2 AREA TO BE REZONED FROM PARK FOREST TO LDR/RES
 - 3 AREA TO BE REZONED FROM LDR TO OFFICE COMMERCIAL
 - 4 AREA TO BE REZONED FROM LDR TO OFFICE COMMERCIAL
 - 5 AREA TO BE REZONED FROM MDR TO LDR/RES
 - 6 AREA TO BE REZONED FROM MDR TO OFFICE COMMERCIAL
 - 7 AREA TO BE REZONED FROM GENERAL COMMERCIAL TO OFFICE COMMERCIAL
 - 8 AREA TO BE REZONED FROM MDR TO GENERAL COMMERCIAL
 - 9 AREA TO BE REZONED FROM OFFICE COMMERCIAL TO GENERAL COMMERCIAL

Wynn
Associates, Inc.
Civil/Urban Planning
Public & Recreation Planning
10000 13th Ave. S.W. #1000
Burien, OR 97149
Tel: 503.471.1111 Fax: 503.471.1112
www.wynnassociates.com

Scale: 1" = 50'
April 8, 2006



APR 7 2006

Rapid City Growth
Management Department