

NOTE:  
EROSION AND SEDIMENT CONTROL SHOWN ON PLANS ARE THE MINIMUM REQUIREMENTS. THE CONTRACTOR WILL BE RESPONSIBLE FOR ADDITIONAL CONTROL MEASURES AS FIELD AND CONSTRUCTION ACTIVITIES DICTATE.

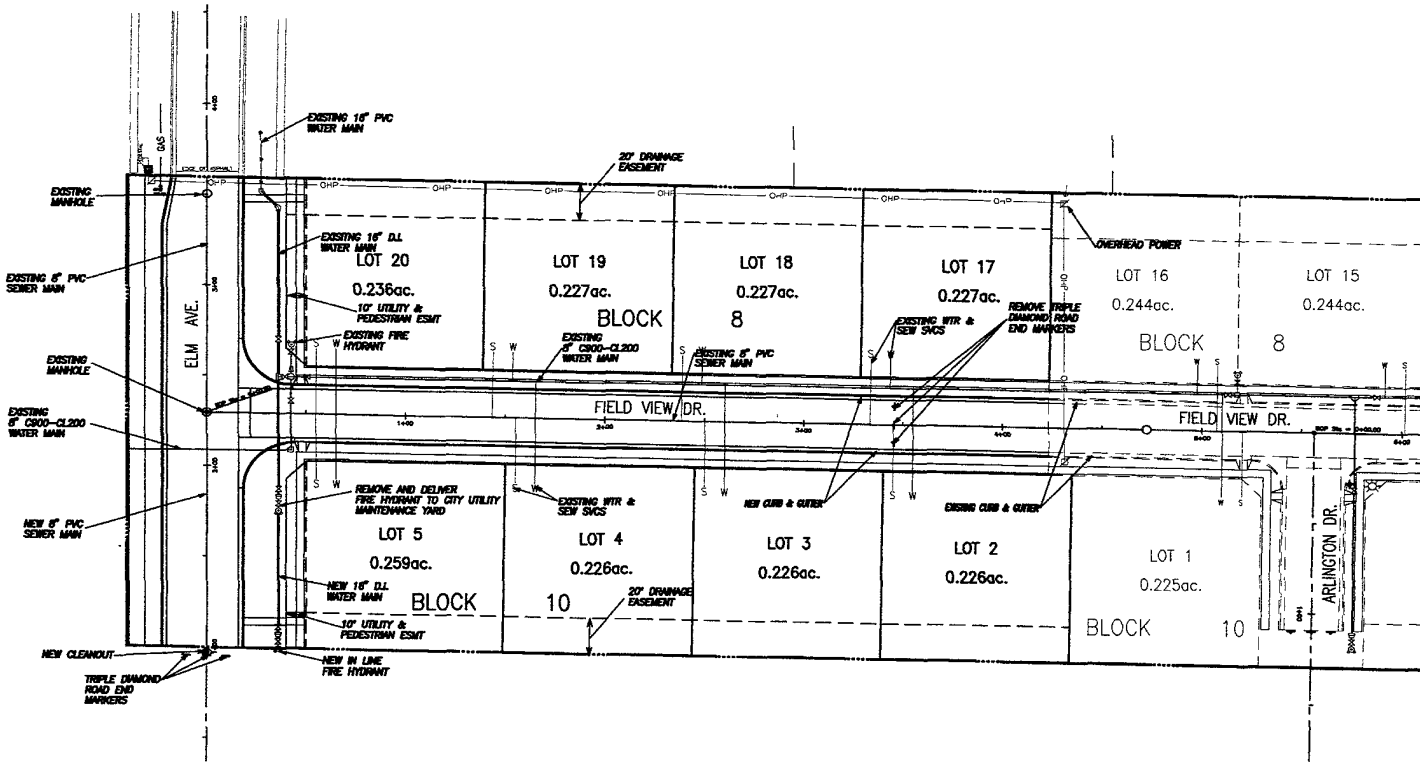
NOTE:  
ALL BUILDING PADS, LOT DRAINAGE AND STRUCTURES SHALL BE IN ACCORDANCE TO THE UNIFORM GRADING CODES. ALL LOT DRAINAGE SHALL BE DIRECTED TO LOT LINES.



**THE MEADOWS SUBDIVISION  
PHASE V  
GRADING, DRAINAGE, & EROSION  
CONTROL MASTER PLAN**

**D.D.I.**  
**DREAM DESIGN INTERNATIONAL, INC.**  
PROFESSIONAL STRUCTURAL & CIVIL ENGINEERING CONSULTANTS  
3008 N. MAIN ST., SUITE B, NASH CITY, OH 43071  
TEL: 614-548-0038 FAX: 614-548-0036 EMAIL: cpl@dreamdesigninc.com

PROJECT # 04-0028  
DESIGNED BY/SCALE: 1/8"=1'-0"  
CHECKED BY/SCALE: 1/4"=1'-0"  
DESIGN DATE: 4-04  
DRAWN BY: DDI  
DATE: 3-02  
SCALE: 1"=30'



SCALE: 1" = 30'

**THE MEADOWS SUBDIVISION  
PHASE V  
MASTER UTILITY PLAN**

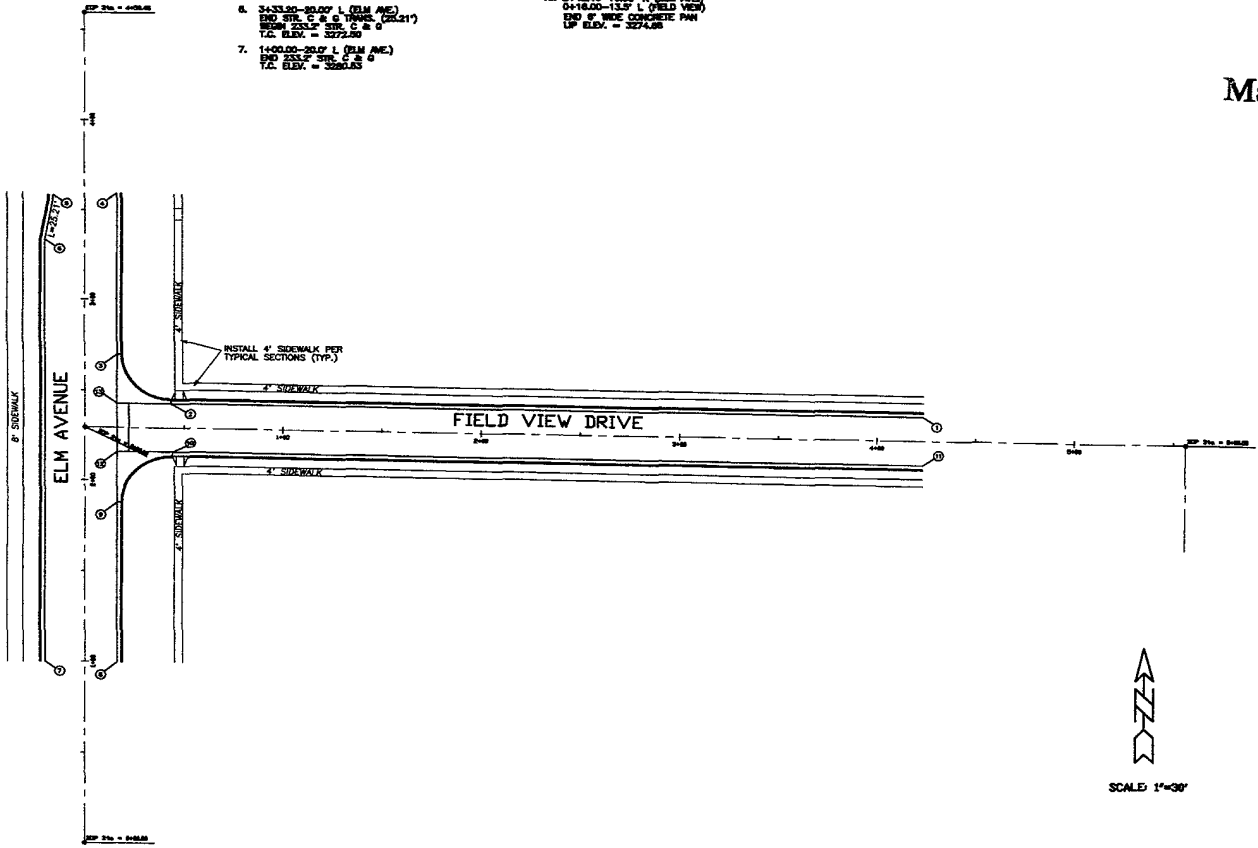
**D.D.I.  
DREAM DESIGN INTERNATIONAL, INC.**  
PROFESSIONAL STRUCTURAL & CIVIL ENGINEERING CONSULTANTS

PROJECT # 04-0058  
DESIGNED BY: DFI  
DESIGN DATE: 8-02  
SURVEYED: 00  
PROJECT DATE: 3-02  
DRAWN BY: DCL

PROJECT LOCATION:  
SEE MAP of SEC. 18  
T4S. 104E. 104W  
SOUTH DAWSON CO.  
NEBRASKA  
REVISIONS:  
REVISION: 1-3-04  
REVISION: 2-1-04  
REVISION: 3-02  
REVISION: 4-02

PH. 603-343-5000 FAX. 603-343-5044 E-MAIL: [engineer@dreamdesigninc.com](mailto:engineer@dreamdesigninc.com)

1. 4+23.33-13.0' L (FIELD VIEW)  
FROM 380.12' STR. C & G  
T.C. ELEV. = 3274.43  
(MATCH EXISTING T.C.)
2. 0+43.51-13.0' L (FIELD VIEW)  
2+42.44-13.0' R (ELM AVE)  
END 28.0' R. FILLET SECTION  
FROM 28.0' R. FILLET SECTION  
T.C. ELEV. = 3276.51
3. 2+70.13-18.0' R (ELM AVE)  
0+18.00-13.0' L (FIELD VIEW)  
END 28.0' R. FILLET SECTION  
FROM 68.10' STR. C & G  
T.C. ELEV. = 3274.18
4. 3+89.27-18.0' R (ELM AVE)  
END 28.0' STR. C & G  
T.C. ELEV. = 3271.28  
(MATCH EXISTING T.C.)
5. 3+89.27-13.0' R (ELM AVE)  
FROM STR. C & G 3888.21'  
T.C. ELEV. = 3271.28  
(MATCH EXISTING T.C.)
6. 3+42.50-30.0' L (ELM AVE)  
END STR. C & G 3888.21'  
FROM 28.0' STR. C & G  
T.C. ELEV. = 3272.88
7. 1+00.00-30.0' L (ELM AVE)  
END 28.0' STR. C & G  
T.C. ELEV. = 3282.88
8. 1+00.00-18.0' R (ELM AVE)  
FROM 87.78' STR. C & G  
T.C. ELEV. = 3282.48
9. 1+87.78-18.0' R (ELM AVE)  
0+18.00-13.0' R (FIELD VIEW)  
END 87.78' STR. C & G  
FROM 28.0' R. FILLET SECTION  
T.C. ELEV. = 3278.78
10. 0+44.13-13.0' R (FIELD VIEW)  
2+18.00-13.0' R (ELM AVE)  
END 28.0' R. FILLET SECTION  
FROM 578.2' STR. C & G  
T.C. ELEV. = 3278.32
11. 4+23.33-13.0' R (FIELD VIEW)  
END 28.0' STR. C & G  
T.C. ELEV. = 3282.48  
(MATCH EXISTING T.C.)
12. 2+18.00-18.0' R (ELM AVE)  
0+18.00-13.0' L (FIELD VIEW)  
FROM 8' WIDE CONCRETE PAV  
UP ELEV. = 3278.51
13. 2+42.44-18.0' R (ELM AVE)  
0+18.00-13.0' L (FIELD VIEW)  
END 8' WIDE CONCRETE PAV  
UP ELEV. = 3274.88



**RECEIVED**  
 APR - 8 2006  
 Rapid City Growth  
 Management Department

**D.D.I.**  
**DREAM DESIGN INTERNATIONAL, INC.**  
 PROFESSIONAL STRUCTURAL & CIVIL ENGINEERING CONSULTANTS  
 1000 W. 10TH ST., SUITE 100  
 RAPID CITY, SD 57701  
 TEL: 605-348-0438 FAX: 605-348-9445 EMAIL: dd@dreamdesigninc.com

PROJECT NO.	04-008	PROJECT LOCATION	1000 W. 10TH ST. SUITE 100 SOUTH DAKOTA
DESIGNED BY	DJI	DATE	8-02
CHECKED BY	DJI	SCALE	AS SHOWN
DATE	7-02	REVISIONS	NO
DRAWN BY	DJI	APPROVED	NO

**THE MEADOWS SUBDIVISION**  
**PHASE V**  
**CONCRETE CURB & GUTTER, CONCRETE SIDEWALKS, CONCRETE FILETS & VALLEY GUTTER**

04PL051

INSTALL CLEANOUT  
AT 0+98.00

1+00.00 TO 2+29.44  
INSTALL 12x44"-8"  
PVC SEWER MAIN  
(BETWEEN CLEANOUT  
AND EXISTING MH)  
CONNECT TO EXISTING MH

1+00.00-36.00' R  
F & 1 FIRE HYDRANT

1+04.00-36.00' R  
F & 1 8" ALC. GV & BOX

1+08.00-36.00' R  
F & 1 1/2" REDUCER

1+12.00-36.00' R  
F & 1 1/2" GATE VALVE & BOX

1+33.63-34.0' R  
F & 1 1/2" TRANSITION COUPLING  
CONNECT TO EXISTING WATER MAIN

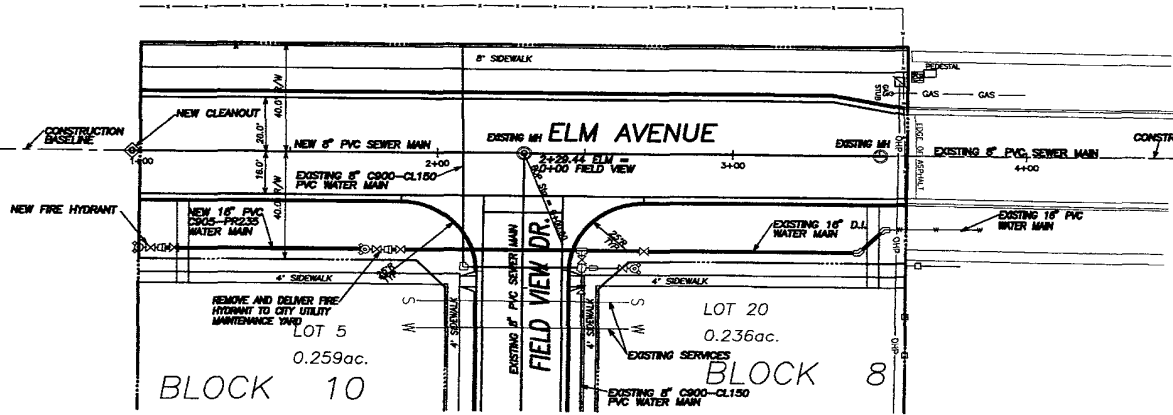
1+08.00-36.00' R TO 1+33.63-36.00' R  
INSTALL 7x33"-18" PVC WATER MAIN  
(BETWEEN EXISTING WATER AND INLINE FH)

1+00.00-36.00' R TO 1+08.00-36.00' R  
F & 1 8.0 L.F. 6" PVC HYDRANT LEAD

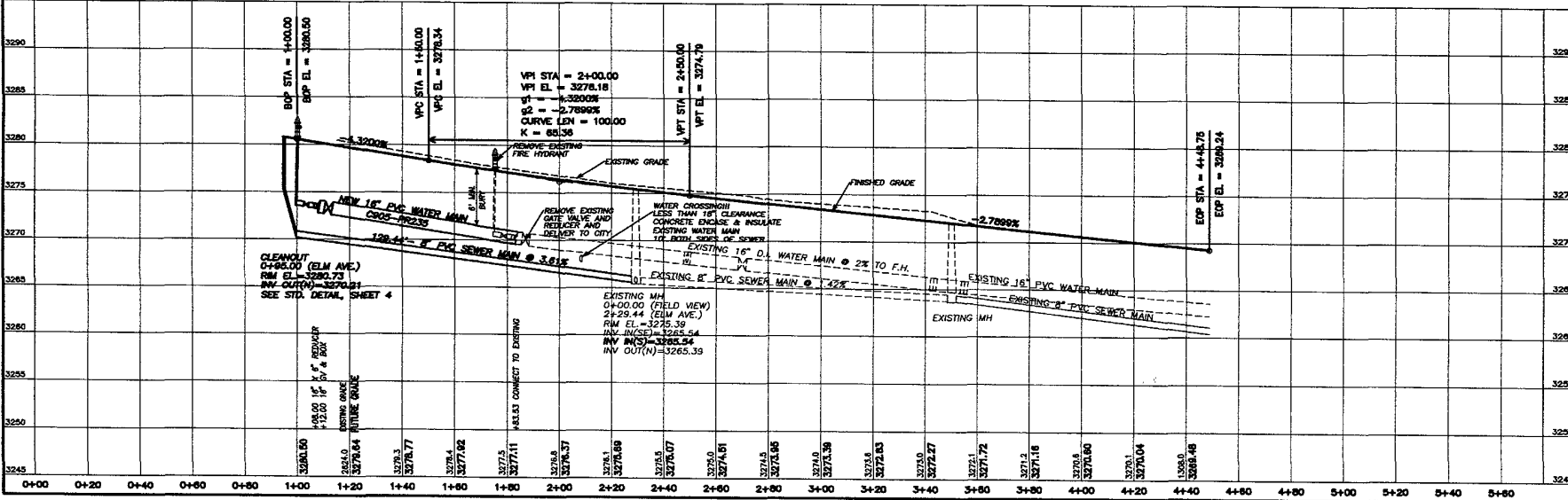
RECEIVED

APR - 8 2006

Rapid City Growth  
Management Department



SCALES:  
1" = 20' HOR  
1" = 5' VER



**D.D.I. DREAM DESIGN INTERNATIONAL, INC.**  
PROFESSIONAL SUBDIVISION & CIVIL ENGINEERING CONSULTANTS

PROJECT # 04-009  
SHEET # 10 OF 10  
DATE: 04/04/06  
DRAWN BY: J. J. JENSEN  
CHECKED BY: J. J. JENSEN  
SCALE: AS SHOWN

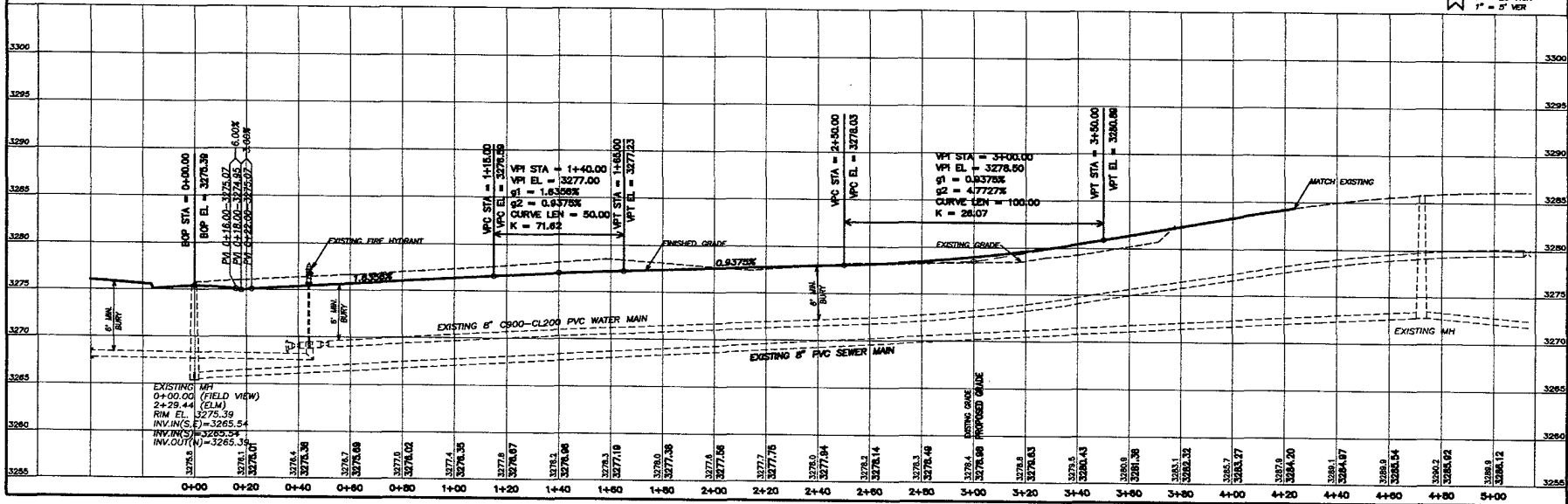
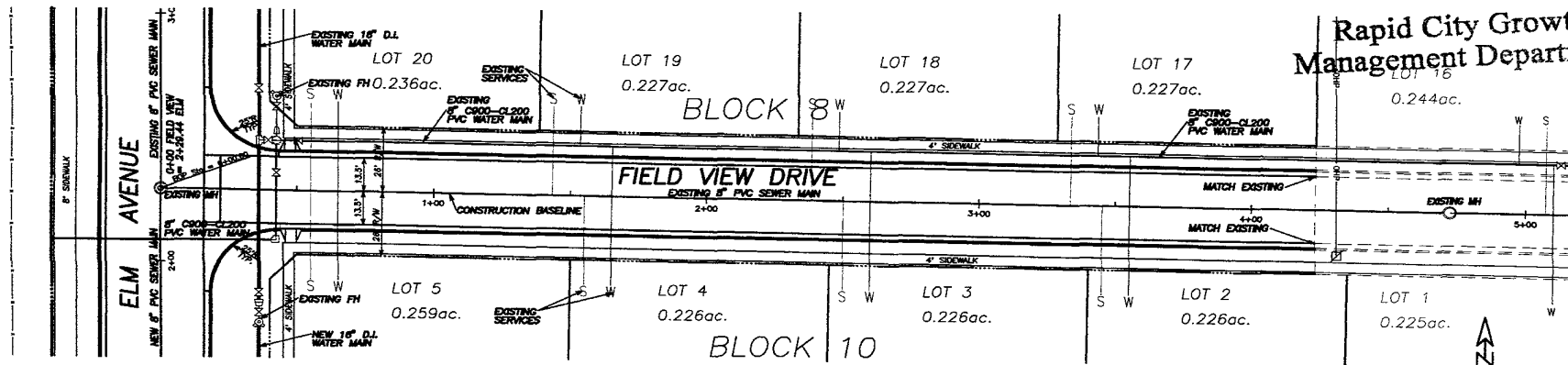
**THE MEADOWS SUBDIVISION  
PHASE V  
ELM AVENUE  
PLAN & PROFILE - 0+00 TO 4+40**

SHEET 10  
9  
11

APR - 8 2006

Rapid City Growth Management Department

MATCH EXISTING ASPHALT FINISHED SURFACE AT STA: 4+23.33



**D.D.I.**  
**DREAM DESIGN INTERNATIONAL, INC.**  
 PROFESSIONAL STRUCTURAL & CIVIL ENGINEERING CONSULTANTS  
 505 E. WALK ST. SUITE 8, RAPID CITY, SD 57701  
 TEL: 605-348-5888 FAX: 605-348-6616 EMAIL: engineer@dreamdesign.com

PROJECT / 04-0028	PROJECT LOCATION:
DESIGNED BY / DCL	LOT 16
ISSUED DATE / 6-02	FIELD VIEW DRIVE
DRAWN BY / DCL	PLANNING
CHECKED BY / DCL	ENGINEERING
DATE / 3-02	REVISIONS:
	1-01
	2-02
	3-02
	4-01
	5-01
	6-01
	7-01
	8-01
	9-01
	10-01
	11-01
	12-01
	13-01
	14-01
	15-01
	16-01
	17-01
	18-01
	19-01
	20-01

**THE MEADOWS SUBDIVISION**  
**PHASE V**  
**FIELD VIEW DRIVE**  
**PLAN & PROFILE - 0+00 TO 4+23.33**