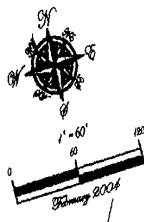


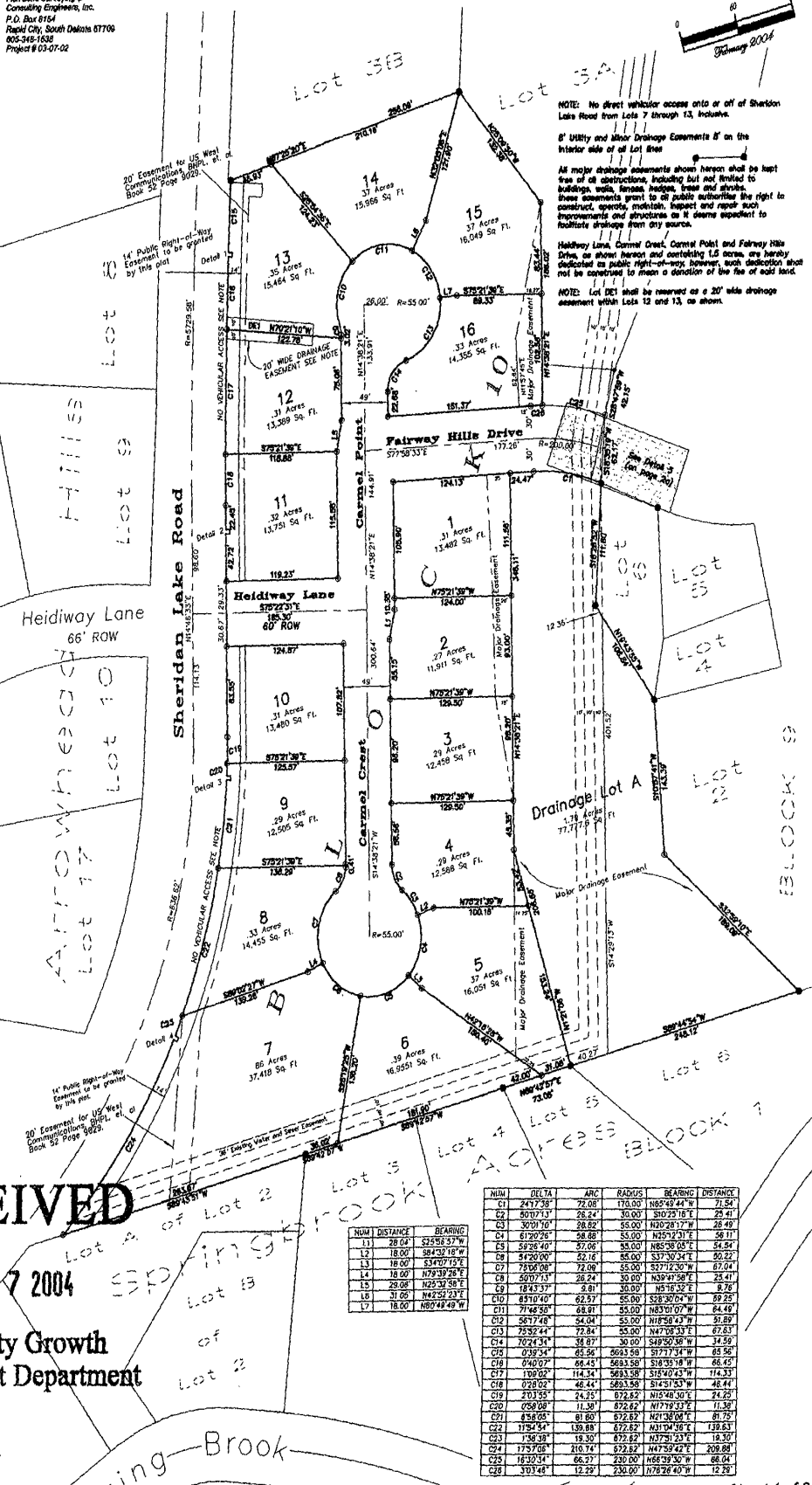
Plat of Lots 1 through 16 inclusive and Drainage Lot A of Block 10 of Fairway Hills P.R.D. and Dedicated R.O.W.
04PD018

Formerly all of Lot 3, all of Lot DE1 of Lot 3A and a portion of Lot 3A of Fairway Hills P.R.D., and a Portion of the unplatted portion of the NW1/4 SW1/4 of Section 15, T1N, R7E, BHM of Fairway Hills P.R.D.

All located in the SW1/4 of Section 15, T1N, R7E, BHM, Rapid City, Pennington County, South Dakota



Prepared by:
 Fisk Land Surveying &
 Consulting Engineers, Inc.
 P.O. Box 8154
 Rapid City, South Dakota 57706
 605-348-1534
 Project # 03-07-02



NOTE: No direct vehicular access onto or off of Sheridan Lake Road from Lots 7 through 13, inclusive.

8' Utility and Minor Drainage Easements 8' on the interior side of all Lot lines

All major drainage easements shown hereon shall be kept free of all obstructions, including but not limited to buildings, walls, fences, hedges, trees and shrubs. These easements grant to all public authorities the right to construct, operate, maintain, inspect and repair such improvements and structures as it deems expedient to facilitate drainage from any source.

NOTE: Lot DE1 shall be reserved as a 20' wide drainage easement with Lots 12 and 13, as shown.

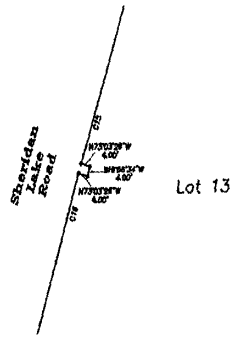
NUM	DELTA	ARC	RADIUS	BEARING	DISTANCE
C1	247.738	72.08	170.00	N85°49'44"W	71.84
C2	601.713	26.24	30.00	S10°28'18"E	23.41
C3	3071.10	28.82	65.00	N30°28'17"W	28.49
C4	6120.25	28.82	65.00	N125°23'17"E	59.11
C5	5228.40	27.06	55.00	N85°38'28"E	54.84
C6	5420.00	22.16	65.00	S37°30'34"E	50.22
C7	7314.08	72.09	55.00	S27°12'30"W	67.04
C8	3071.13	26.24	30.00	N30°44'58"E	23.41
C9	1843.37	3.81	30.00	N85°35'32"E	8.78
C10	6510.40	62.57	55.00	S38°30'24"E	89.25
C11	7144.50	68.91	55.00	N83°07'07"W	84.48
C12	5617.48	54.04	55.00	N18°58'43"W	51.89
C13	7352.44	72.84	55.00	N47°38'33"E	67.83
C14	7024.31	38.87	30.00	S49°50'38"W	34.59
C15	2352.54	65.86	65.86	S77°17'54"W	65.56
C16	9240.07	66.43	5683.50	S18°35'18"W	66.43
C17	109.02	114.34	5683.50	S18°50'43"W	114.33
C18	9282.02	46.44	5683.50	S14°51'53"W	46.44
C19	2103.35	24.23	672.62	N15°48'30"E	24.23
C20	6580.08	11.38	378.62	N17°45'32"E	11.38
C21	638.05	81.80	672.62	N21°38'01"E	81.75
C22	1184.54	139.88	672.62	N31°04'38"E	139.83
C23	136.38	18.30	672.62	N37°31'23"E	18.30
C24	1757.08	210.74	672.62	N47°59'42"E	209.88
C25	1630.54	66.27	230.00	N85°39'30"W	66.04
C26	303.48	12.22	230.00	N78°26'40"W	12.22

RECEIVED
 FEB 27 2004
 Planning Department

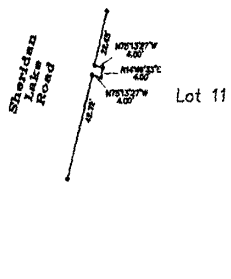
Plat of Lots 1 through 16 inclusive and Drainage Lot A of Block Lot A of Fairway Hills P.R.D. and Dedicated R.O.W.
04PD018

Formerly all of Lot 3, all of Lot DE1 of Lot 3A and a portion of Lot 3A of Fairway Hills P.R.D., and a Portion of the unplatted portion of the NW1/4 SW1/4 of Section 15, T1N, R7E, BHM of Fairway Hills P.R.D.
 All located in the SW1/4 of Section 15, T1N, R7E, BHM, Rapid City, Pennington County, South Dakota

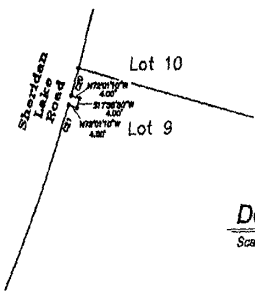
Prepared by:
 Fisk Land Surveying &
 Consulting Engineers, Inc.
 P.O. Box 8154
 Rapid City, South Dakota 57709
 605-348-1538
 Project # 03-07-02



Detail 1
 Scale: 1"=30'



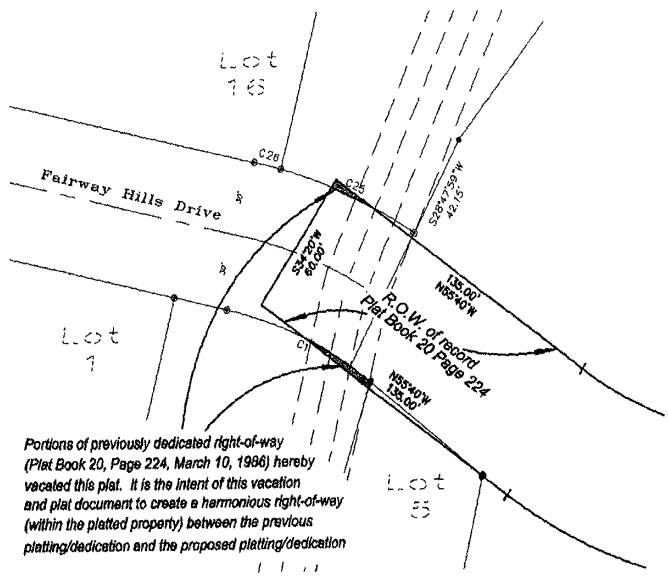
Detail 2
 Scale: 1"=30'



Detail 3
 Scale: 1"=30'



Detail 4
 Scale: 1"=30'



Portions of previously dedicated right-of-way (Plat Book 20, Page 224, March 10, 1986) hereby vacated this plat. It is the intent of this vacation and plat document to create a harmonious right-of-way (within the platted property) between the previous platting/dedication and the proposed platting/dedication

Detail 5
 Scale: 1"=30'