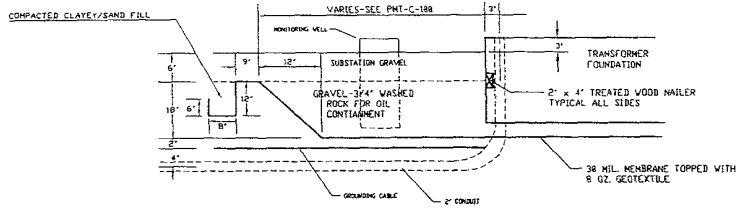


**PAD "A"
TRANSFORMER
2 - REQ.**
XFMR WEIGHT - 90,200#



- OIL CONTAINMENT NOTES**
1. MONITORING WELL TO BE 12" P.V.C PIPE (WHITE) WITH REMOVEABLE CAP. TOP TO BE 3" ABOVE FINISHED SURFACE GRADE, BOTTOM TO BE OPEN AND 2" ABOVE LINER. SEE VR-4 FOR LOCATION
 2. CUT OR DRILL HOLES THRU WATER STOP FOR CONDUIT AND GROUND WIRES. SEAL WITH METHOD APPROVED BY MANUFACTURER
 3. OIL PROOF MEMBRANE SHALL BE 38MIL CHLORINATED POLYETHYLENE (CPE) FROM WATERSAVER COMPANY INC. DENVER, COLORADO, OR APPROVED EQUIVALENT, FURNISHED WITHOUT ANY FIELD SEAMS (IF POSSIBLE).
 4. 8 OZ. GEOTEXTILE SHALL BE PLACED ON TOP OF MEMBRANE BEFORE CONCRETE AND BACKFILL TO PROTECT MEMBRANE FROM DAMAGE. SUBGRADE SHALL BE SMOOTH AND FREE OF ROCKS, STICKS OR OTHER SHARP OBJECTS PRIOR TO LAYING MEMBRANE.
 5. ANCHOR TRENCH SHALL BE DUG PRIOR TO LAYING MEMBRANE TO MINIMUM DIMENSIONS SHOWN IMMEDIATELY AFTER INSTALLING MEMBRANE, ANCHOR TRENCH SHALL BE BACKFILLED WITH SANDY/CLAY FILL AND TAMPED.
 6. EXTREME CARE SHALL BE TAKEN TO PREVENT MEMBRANE DAMAGE, ESPECIALLY DURING FORMWORK AND CONCRETE PLACING FOR TRANSFORMER PADS. FORMWORK SHALL BE DESIGNED AND BRACED SO THAT NO PENETRATION OF MEMBRANE OCCURS. SAND BAGS, TIRES OR OTHER SMOOTH WEIGHT MAY BE REQUIRED TO STABILIZE MEMBRANE PRIOR TO BACKFILL.
 7. THE LINING MATERIAL SPECIFIED IS TOUGH AND DURABLE HOWEVER, SHOULD DAMAGE OCCUR, THE ENGINEER WILL DETERMINE WHETHER REPAIR OR REPLACEMENT IS REQUIRED. MINOR RIPS SHALL BE FIXED WITH REPAIR PATCHES AND SOLVENT ADHESIVE, OR OTHER METHOD APPROVED BY THE MANUFACTURER. FOR MAJOR DAMAGE AS DETERMINED SOLELY BY ENGINEER, WILL REQUIRE REPLACEMENT AT THE CONTRACTORS EXPENSE.

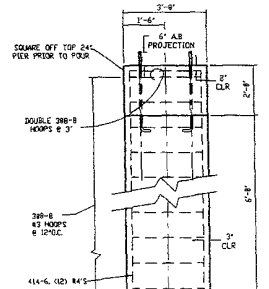
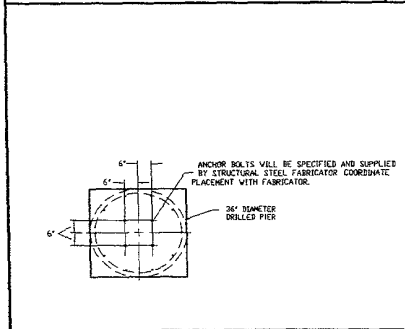
REINFORCING SCHEDULE

| MARK | QTY | SIZE | LENGTH (L) | SHAPE | DN A | DN B | DN C |
|-------|-----|------|------------|----------|--------|------|------|
| 687-7 | 18 | K5 | 11'-7" | STRAIGHT | 11'-7" | | |
| 687-7 | 26 | K5 | 7'-7" | STRAIGHT | 7'-7" | | |

MATERIAL SUMMARY (EACH)

| | |
|-------------------|------------|
| TOTAL CONCRETE | 71 CU YDS. |
| TOTAL REINFORCING | 425 LB. |

TRANSFORMER & MOBILE SUBSTATION PAD "A"



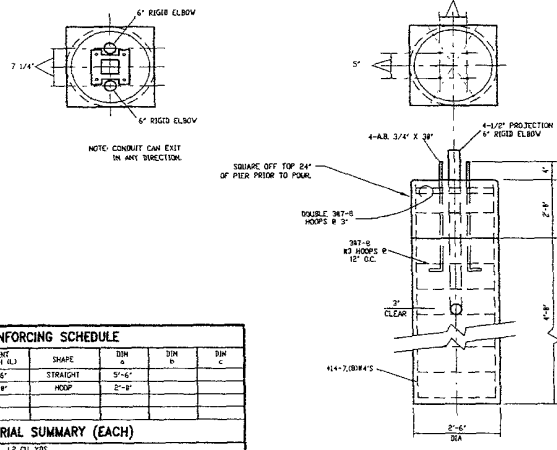
REINFORCING SCHEDULE

| MARK | QTY | SIZE | LENGTH (L) | SHAPE | DN A | DN B | DN C |
|-------|-----|------|------------|----------|-------|------|------|
| 388-B | 18 | #3 | 8'-8" | HOOP | 2'-4" | | |
| 414-B | 12 | #4 | 7'-4" | STRAIGHT | 7'-4" | | |

MATERIAL SUMMARY (EACH)

| | |
|-------------------|------------|
| TOTAL CONCRETE | 21 CU YDS. |
| TOTAL REINFORCING | 97# |

PIER "B" - 69KV STRUCTURE FOUNDATION (6 REQ'D)



REINFORCING SCHEDULE

| MARK | QTY | SIZE | LENGTH (L) | SHAPE | DN A | DN B | DN C |
|-------|-----|------|------------|----------|-------|------|------|
| 414-C | 8 | #4 | 5'-4" | STRAIGHT | 5'-4" | | |
| 387-C | 8 | #3 | 7'-8" | HOOP | 2'-4" | | |

MATERIAL SUMMARY (EACH)

| | |
|-------------------|------------|
| TOTAL CONCRETE | 12 CU YDS. |
| TOTAL REINFORCING | 51 LB. |

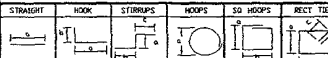
PIER "C" (1 REQ'D)

RISER SUPPORT

STR WEIGHT - 370#

LEGEND

STANDARD BAR TYPES



CONSTRUCTION NOTES & DETAILS

1. SEE WRITTEN SPECIFICATIONS FOR CONCRETE MIX AND PLACEMENT.
2. PROJECTION OF CONCRETE LANDING GRADE AND FINISH GRAVEL WILL VARY DEPENDING UPON TOP OF CONCRETE ELEVATIONS ESTABLISHED ON THE FOUNDATION & FENCE PLAN.
3. ANCHOR BOLT SIZE & BOLT PATTERN ARE AS SPECIFIED BY THE STRUCTURAL STEEL FABRICATOR.

DATE: 02/28/04 NO. 02/04 REVISION DESCRIPTION

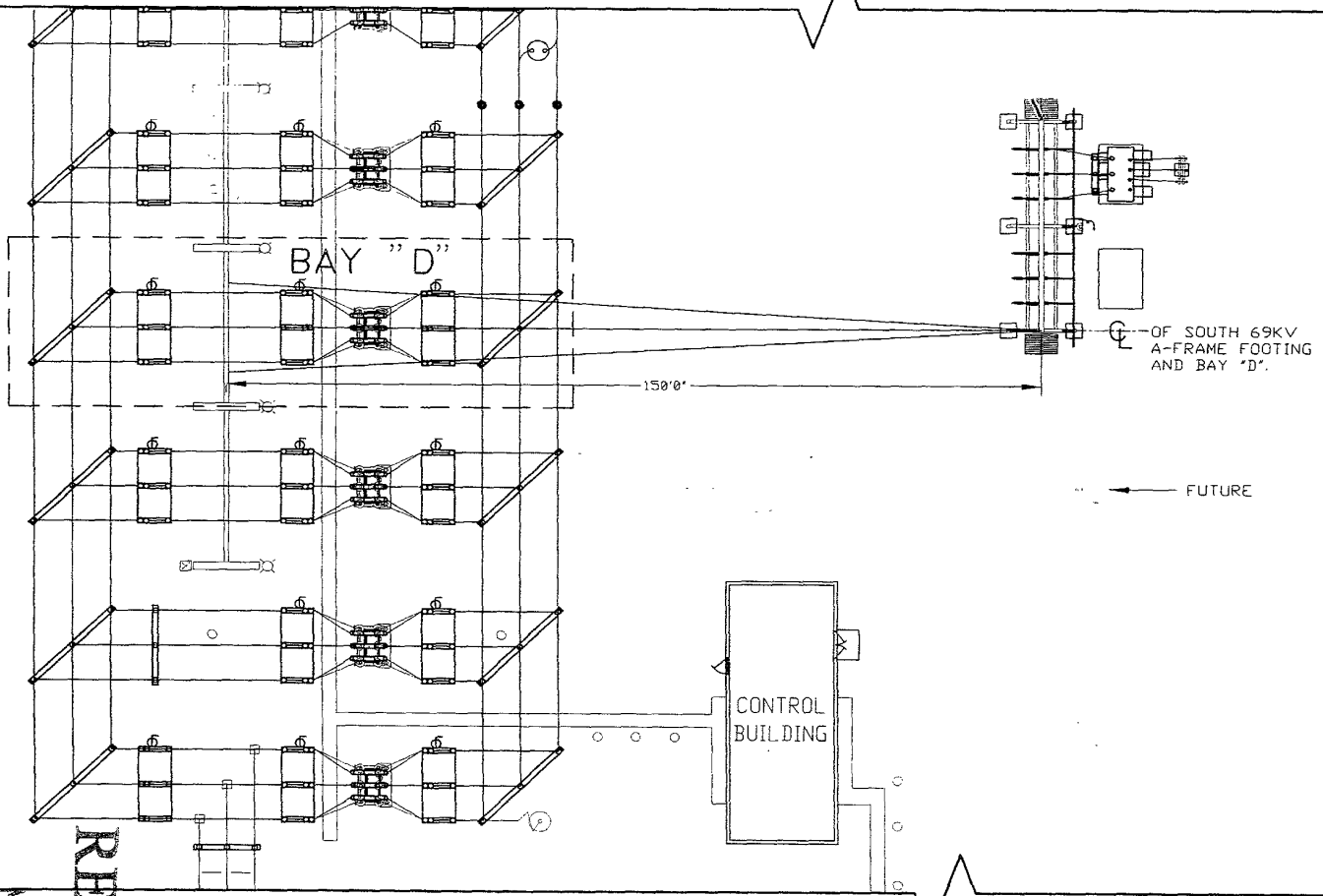
BLACK HILLS POWER

SOUTH RAPID CITY 12.47KV SUBSTATION

FOUNDATION DETAILS

SRD-C-100

RECEIVED
 Rapid City
 Management



LOW VOLTAGE
SWITCHGEAR
& CONTROLS

OF SOUTH 69KV
A-FRAME FOOTING
AND BAY "D".

FUTURE

CONTROL
BUILDING

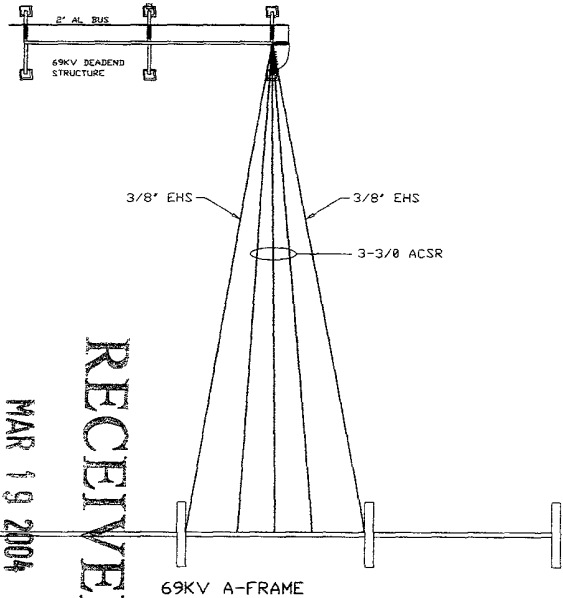
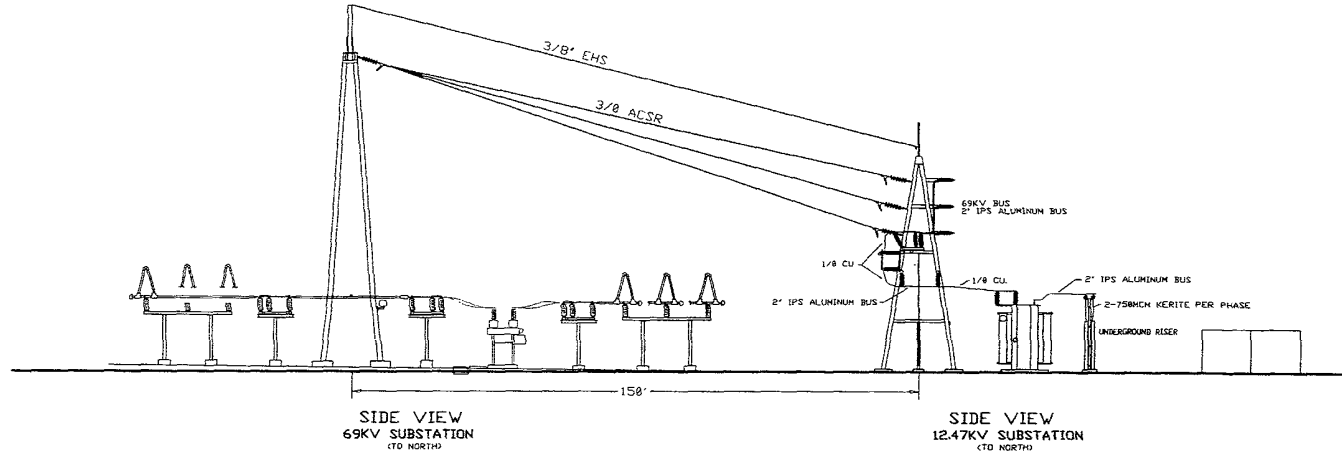
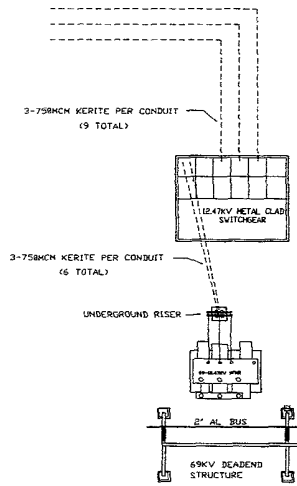


RECEIVER
 Rapid City Growth
 Management Department
 MAR 19 2004

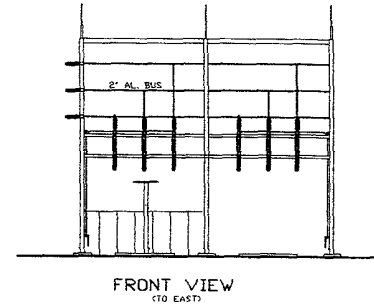
| DATE | BY | NO. | APPROVAL | REVISION DESCRIPTION |
|------|----|-----|----------|----------------------|
| | | | | |
| | | | | |
| | | | | |
| | | | | |

BLACK HILLS POWER
 SOUTH RAPID CITY 12.47KV SUBSTATION
**FOOTINGS AND
 BAY "D" 69KV SUBSTATION**
 DATE 02/23/04
 DATE 02/23/04
SRD-C-102A

04SR017



THIS DRAWING IS NOT TO SCALE



Rapid City Growth
Management Department

MAR 19 2004

RECEIVED

| DATE | BY | NO. | REVISION DESCRIPTION |
|------|----|-----|----------------------|
| | | | |
| | | | |
| | | | |
| | | | |
| | | | |

BLACK HILLS POWER

SOUTH RAPID CITY 12.47KV SUBSTATION

CONDUCTOR LAYOUT

DATE: 04/12/04
BY: JES/BAW
CHK: JES/BAW

DWG NO: **SRD-C-388**

