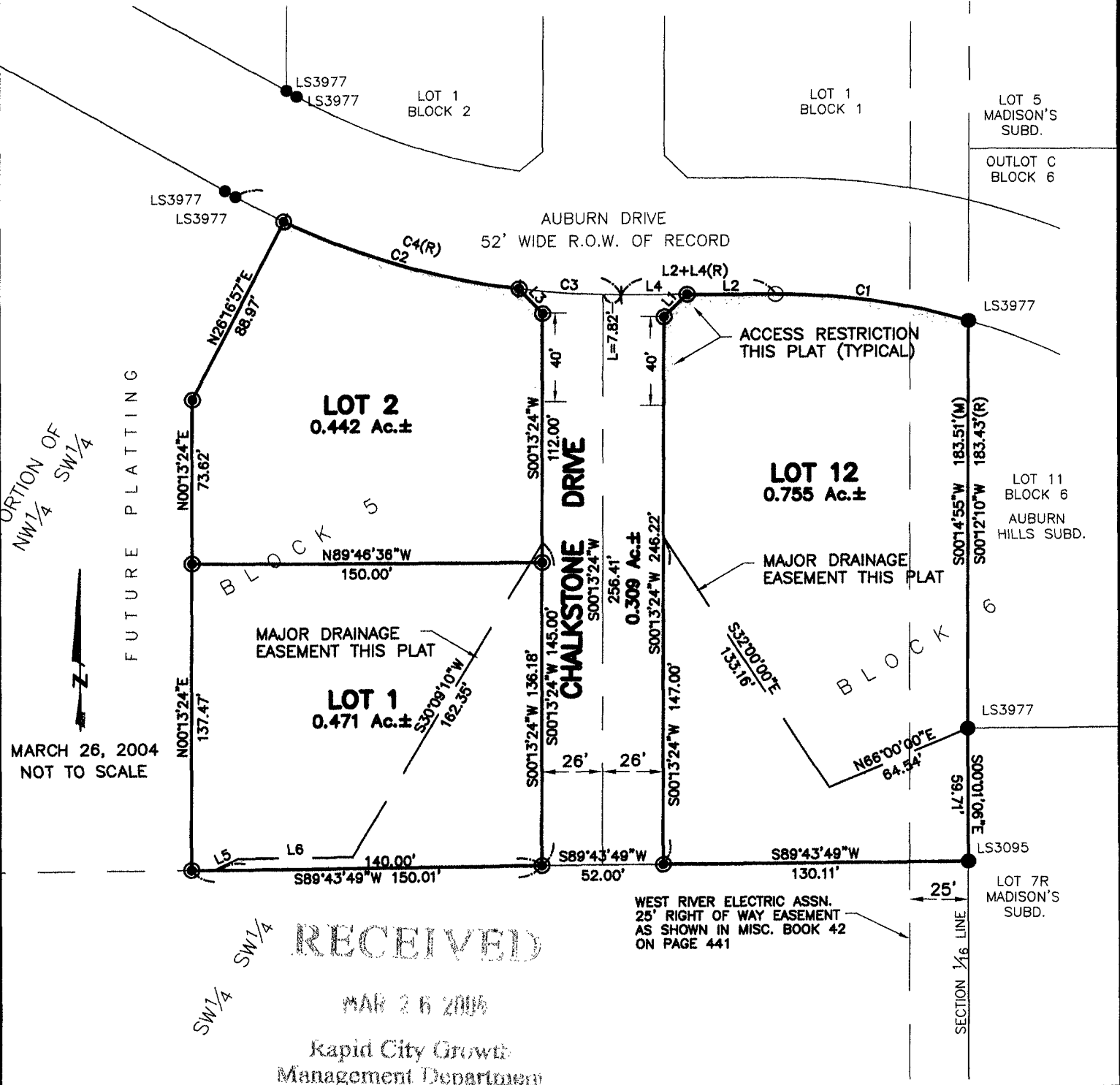


PLAT OF  
**LOTS 1 AND 2 OF BLOCK 5, AND LOT 12 OF BLOCK 6,**  
**AUBURN HILLS SUBDIVISION**  
**AND DEDICATED RIGHT-OF-WAY OF CHALKSTONE DRIVE,**  
 (FORMERLY A PORTION OF THE NW<sup>1</sup>/<sub>4</sub> OF THE SW<sup>1</sup>/<sub>4</sub>)  
 LOCATED IN THE NW<sup>1</sup>/<sub>4</sub> OF THE SW<sup>1</sup>/<sub>4</sub>,  
 SECTION 13, T2N, R7E, B.H.M.,  
 RAPID CITY, PENNINGTON COUNTY, SOUTH DAKOTA



MARCH 26, 2004  
NOT TO SCALE

RECEIVED  
 MAR 26 2005  
 Rapid City Growth  
 Management Department