

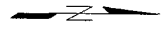
N00°17'E  
600.00'

LEGAL DESCRIPTION

LOT 1 OF MOWRY SUBDIVISION  
LOCATED IN SW1/4 OF SW1/4 OF  
SECTION 17, T2N, R8E, BHM  
PENNINGTON COUNTY, SOUTH DAKOTA

LEGEND

- FOUND SURVEY MOUNT
- SET 5/8" REBAR WITH SURVEY CAP MARKED "FRANCIS-MEADOR 1019"

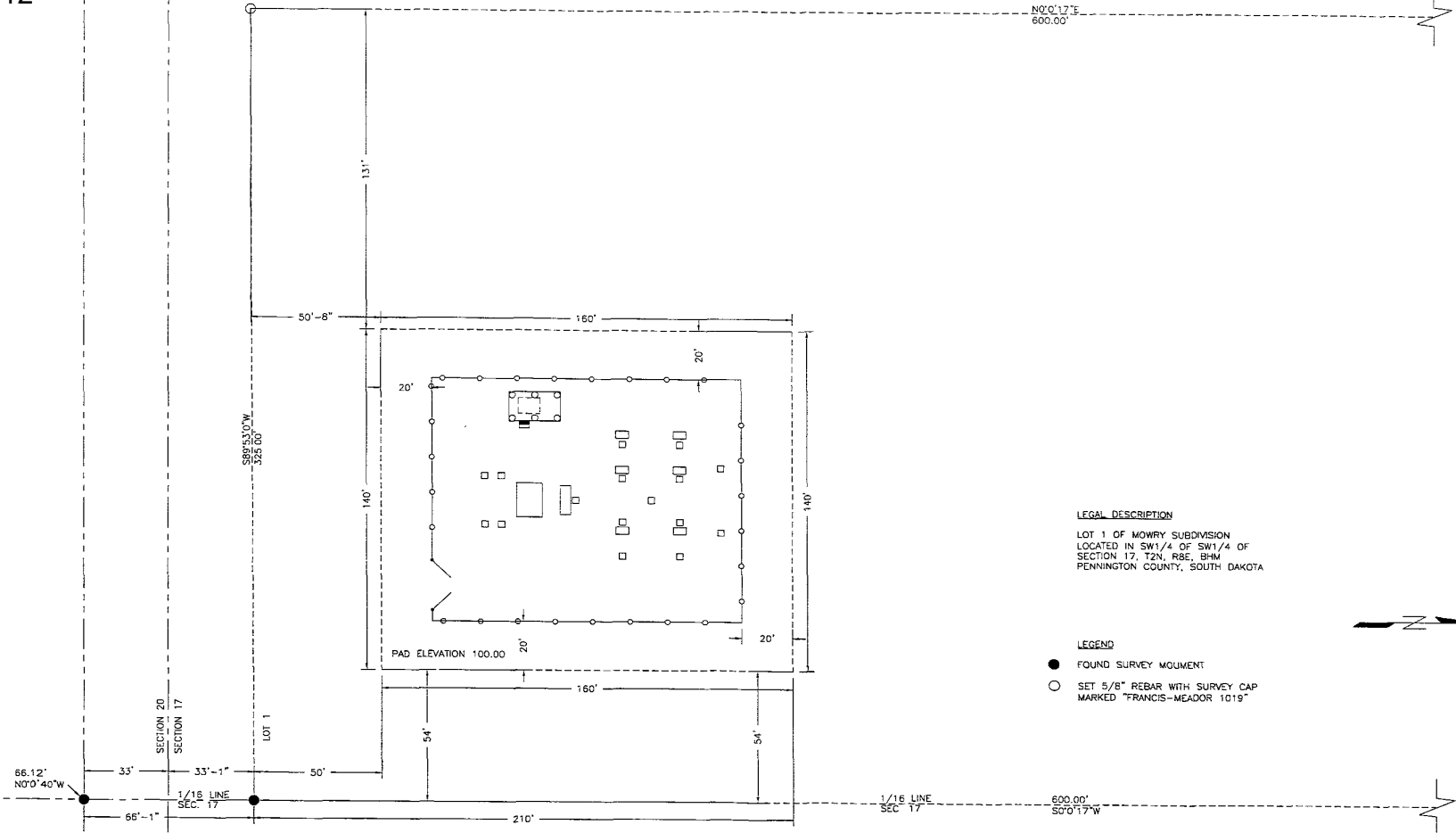


**RECEIVED**

**MAR 09 2004**

**Rapid City Growth  
Management Department**

WEST RIVER ELECTRIC ASSOCIATION RUSHMORE ELECTRIC POWER COOPERATIVE	
HAINES SUBSTATION	
LOT LAYOUT	
DRAWN/CHECKED BY: SO/	SHEET: 2
FEB 2004	SCALE: 1" = 40'
S:\Projects\04 SR\04SR012\04SR012.dwg	



SECTION 20  
SECTION 17

LOT 1

66.12' N00°40'W

33' 33'-1"

1/16 LINE SEC. 17

50'

S89°53'00"W  
325.00'

131'

50'-8"

160'

20'

160'

20'

20'

140'

140'

PAD ELEVATION 100.00

20'

160'

54'

54'

50'

66'-1"

210'

1/16 LINE SEC. 17

600.00' S00°17'W