

DELOIRMIER
PROPERTY
5.6 AC

04PD021

UNPLATTED

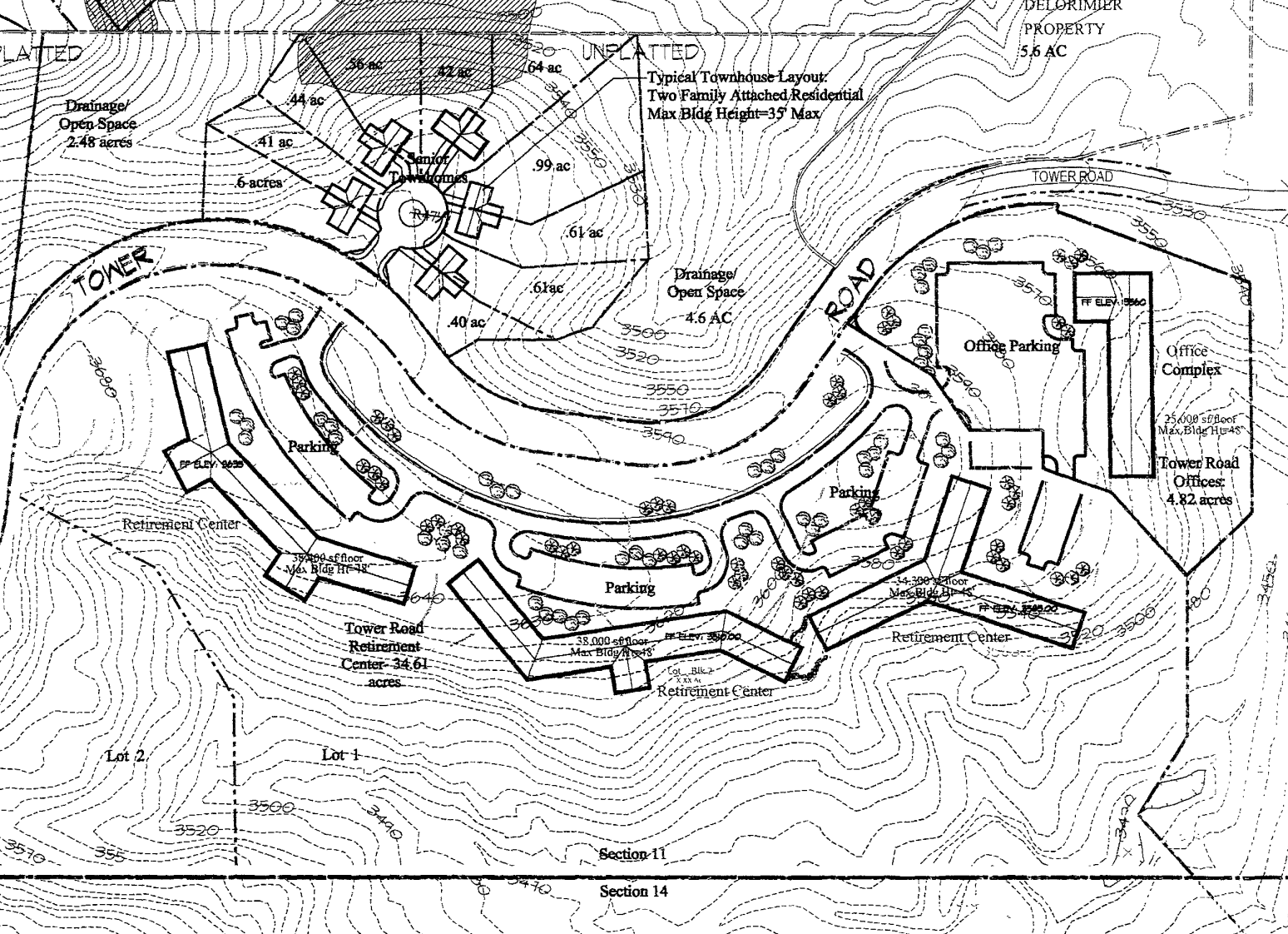
UNPLATTED

Drainage/
Open Space
2.48 acres

Typical Townhouse Layout:
Two Family Attached Residential
Max Bldg Height=35' Max

Sandstone
Lanes to be
improved to a
Subcollector-
type 24' Paved
Surface with
NQ on-street
parking.

Periodic use of
Curb and
Gutter to direct
drainage



TOWER

ROAD

TOWER ROAD

Senior
Townhomes

Drainage/
Open Space
4.6 AC

Office Parking

Office
Complex

25,000 sq.foot
Max. Bldg H=45'

Tower Road
Offices:
4.82 acres

Parking

Parking

Retirement Center

37,000 sq.foot
Max. Bldg H=45'

Parking

34,300 sq.foot
Max. Bldg H=45'

Tower Road
Retirement
Center - 34.61
acres

38,000 sq.foot
Max. Bldg H=45'

Retirement Center

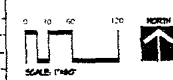
Retirement Center

Lot 2

Lot 1

Section 11

Section 14



Plans Prepared by:
Wyss
Associates, Inc.

March 12, 2004

Tower Road Retirement Center

- Planned Residential Development
- Comprehensive Plan Amendment
- Office Commercial Rezone Exhibit
- Future Land Use Plan Exhibit
- Layout Plat