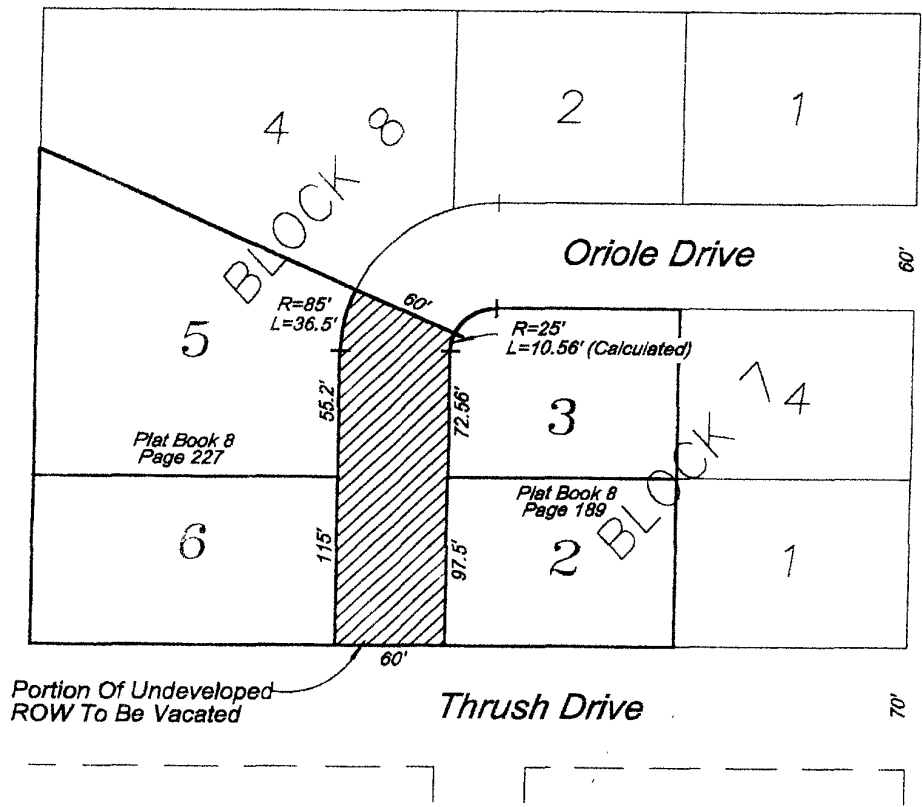
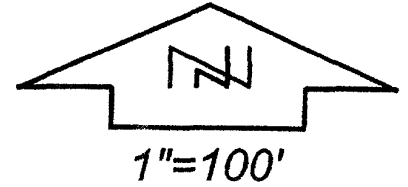


# EXHIBIT A

VACATION OF A PORTION OF UNDEVELOPED ORIOLE DRIVE RIGHT-OF-WAY  
ADJOINING LOTS 2 AND 3 IN BLOCK 7 AND LOTS 5 AND 6 IN BLOCK 8 OF LOT A  
OF MORNINGSIDE ADDITION ADDENDUM,  
RAPID CITY, PENNINGTON COUNTY, SOUTH DAKOTA



Portion Of Undeveloped ROW To Be Vacated

Dimensions Shown Are Of Record,  
Or As Otherwise Indicated



PREPARED BY:  
FISK LAND SURVEYING & CONSULTING ENGINEERS, INC.  
P.O. BOX 8154, RAPID CITY, SD 57709 (605) 348-1538 OCT. 20, 2003