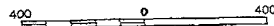
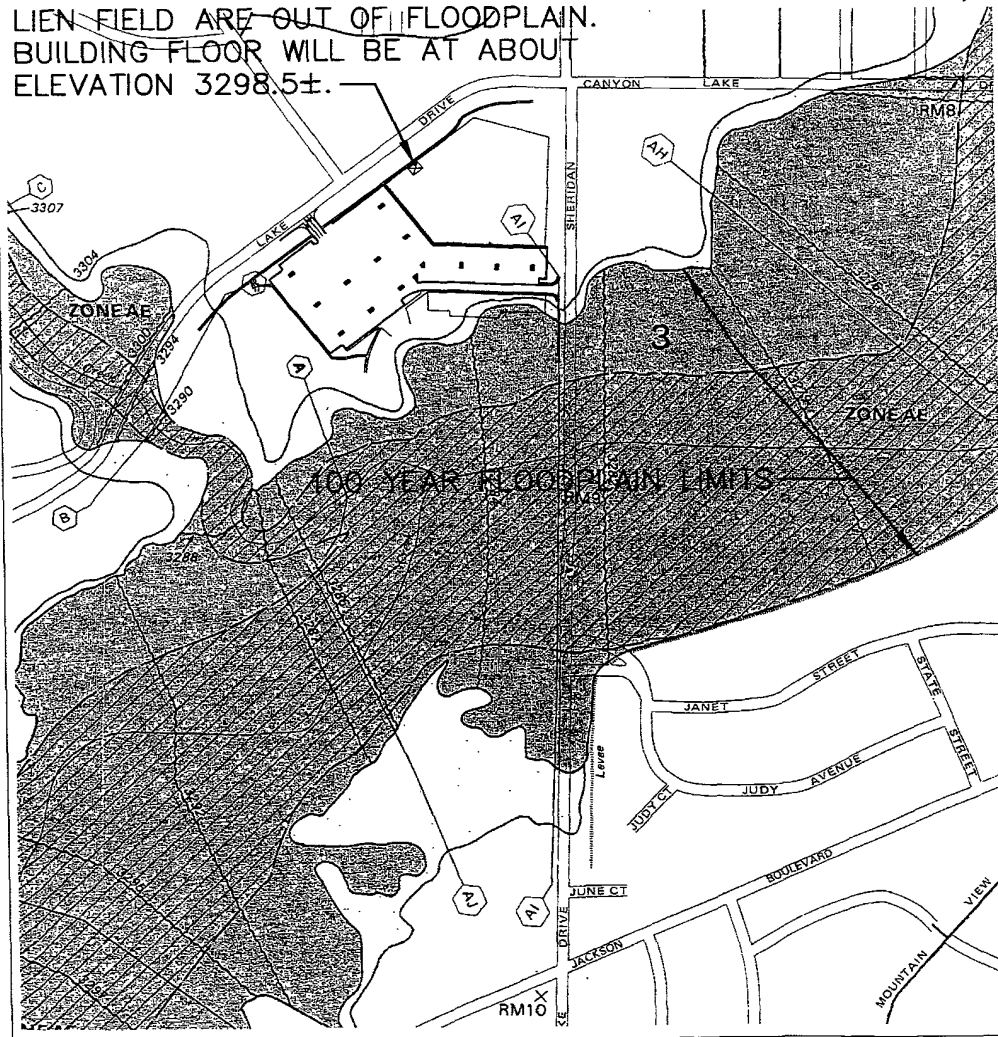


APPROXIMATE LOCATION OF PROPOSED STORAGE BUILDING. BUILDING AND PETE LIEN FIELD ARE OUT OF FLOODPLAIN. BUILDING FLOOR WILL BE AT ABOUT ELEVATION 3298.5±.

APPROXIMATE SCALE IN FEET



04SR010



NATIONAL FLOOD INSURANCE PROGRAM

**FIRM**  
FLOOD INSURANCE RATE MAP

CITY OF  
RAPID CITY,  
SOUTH DAKOTA  
PENNINGTON COUNTY

(SEE MAP INDEX FOR PANELS NOT PRINTED)

COMMUNITY-PANEL NUMBER  
465420 0004 F

MAP REVISED:  
FEBRUARY 16, 1996



Federal Emergency Management Agency

**F M G, Inc.**  
3700 Snuggles Road  
Rapid City, SD 57702-0317  
(605) 342-4108 FAX (605) 342-4222



File Number	8753
Location	St. 1/2, W. 1/4, SEC. 3, T1N, R7E, W4
Surveyed By	1992
Date	1992
Designed By	1992
Drawn By	1992
Checked By	1992

**NEW STORAGE BUILDING**  
PETE LIEN FIELD  
320 STARS BASEBALL  
RAPID CITY, SOUTH DAKOTA

3/4/04  
REV. BLDG.  
LOCATION

Revision / Date

Sheet Name  
FLOODPLAIN  
MAP

Sheet Number

**4**

Total Sheets

**4**

REVIEW SET  
NOT FOR CONSTRUCTION